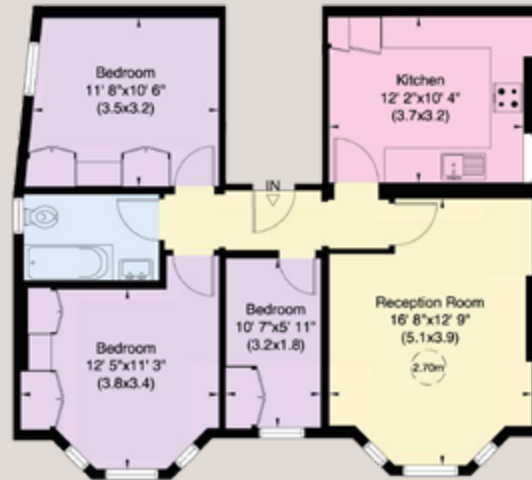




40 Priests Bridge, SW14



Approx. Gross Internal Area
766 sq ft (71 sq m)



First Floor



Priests Bridge, SW14

A first floor three bedroom apartment in a handsome Victorian double fronted building.

Terms

| | |
|-------------------------|---|
| Tenure | Leasehold, new 999 year lease to be issued. |
| Service Charge | TBC |
| Ground Rent | TBC |
| Council Tax Band | E |
| EPC Rating | D |
| Local Authority | Richmond Upon Thames |
| Price | £675,000 Subject to Contract |

For clarification purposes we wish to inform all interested parties that we have prepared these particulars as a general guide. We have not carried out a detailed survey nor tested the services, appliances and specific fittings. Room sizes should not be relied upon for carpets and furnishings

JOHN WILCOX
& Co.
020 7602 2352
www.johnwilcox.co.uk