



Queensdale Walk, W11

Queensdale Walk

W11

A Victorian three bedroom house over just two floors on a peaceful and sought-after road in W11. The house was completely refurbished in the last three years and has the preferred layout of an open plan kitchen/dining/reception room leading out to the private garden. With three double bedrooms and two bathrooms, the house also benefits from a vaulted ceiling on the first floor to provide extra height.

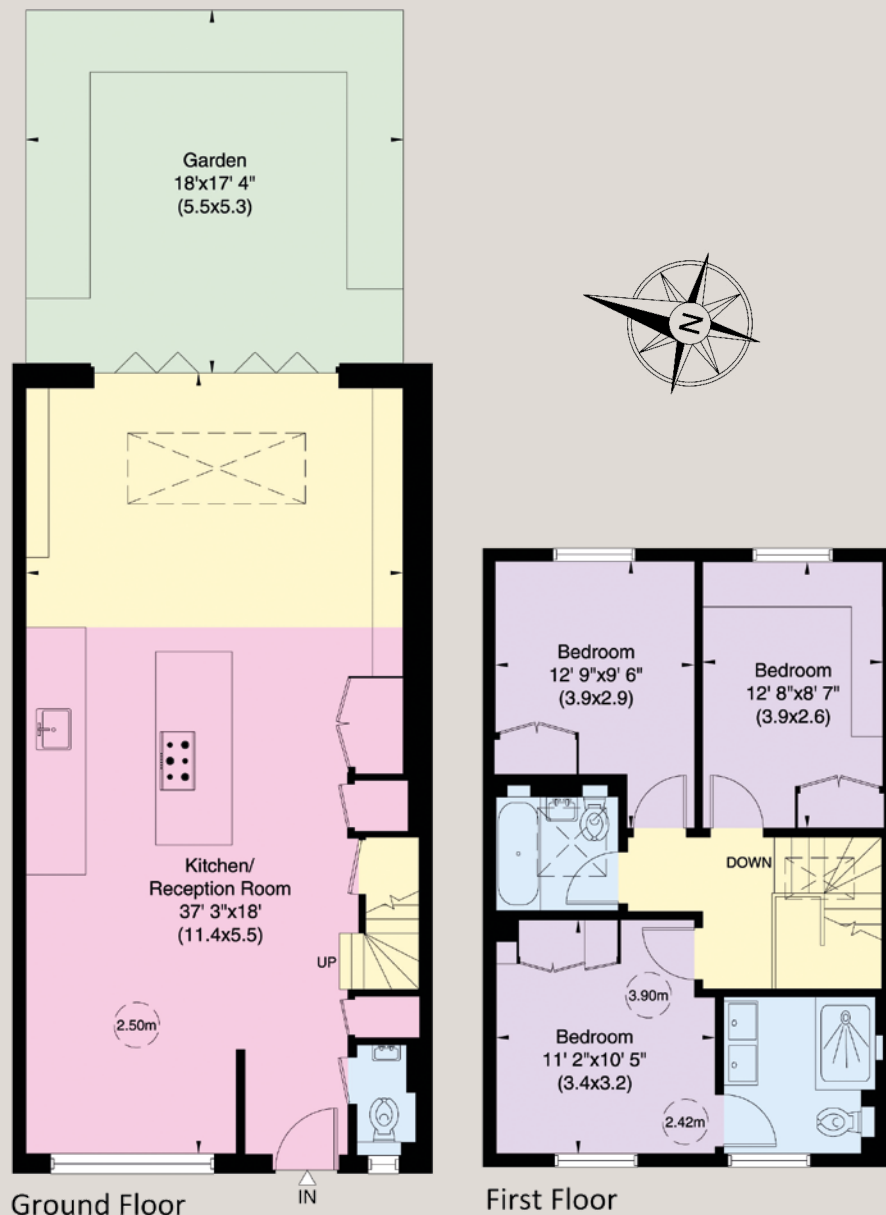
Being on a quiet cul-de-sac lying parallel to the east of Addison Avenue, the location is very much the best of both worlds. With Queensdale Walk itself the very picture of tranquility, while being close enough to the bars, shops and restaurants of Holland Park Avenue and Notting Hill to the east, and with Westfield to the west, every need is catered for. Transport links are excellent with Holland Park (Central line) and Shepherds Bush (Central line and overground) stations nearby, and with road links eastward into Central London, and westward to the M40 and M4.





Approx. Gross Internal Area

112 sq m / 1,201 sq ft



Terms

Rent £1,650 per week

£7,150 per calendar month

Council Tax Band F

EPC Rating D

Availability End of June 2025

Pets considered

For clarification purposes we wish to inform all interested parties that we have prepared these particulars as a general guide. We have not carried out a detailed survey nor tested the services, appliances and specific fittings. Room sizes should not be relied upon for carpets and furnishings

JOHN WILCOX
& Co.

020 7602 2352

www.johnwilcox.co.uk