



Approximate total area⁽¹⁾

1459.48 ft²
135.59 m²

Reduced headroom

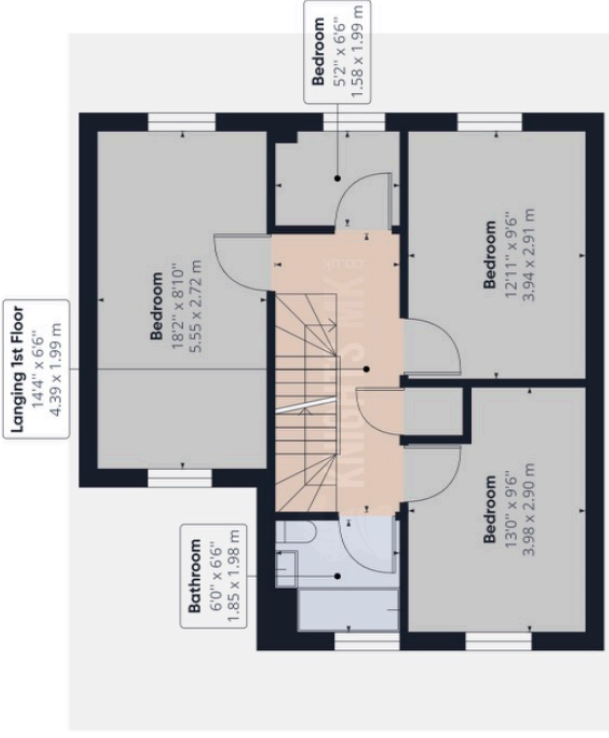
19.61 ft²
1.82 m²

(1) Excluding balconies and terraces

Reduced headroom
(below 1.5m/4.92ft)

While every attempt has been made to ensure accuracy, all measurements are approximate, not to scale. This floor plan is for illustrative purposes only.

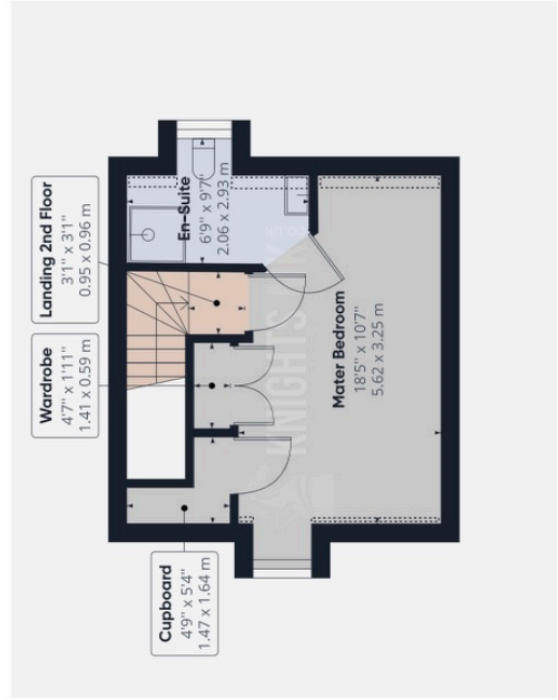
GIRAFFE 360



Floor 1 Building 1



Floor 0 Building 1



Floor 2 Building 1