

Approximate total area⁽¹⁾
1146.74 ft²
106.54 m²

Reduced headroom
68.14 ft²
6.33 m²

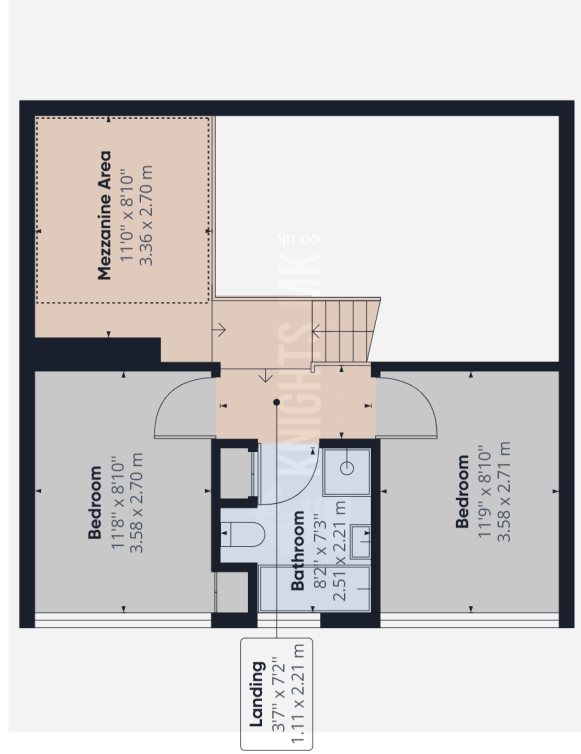
(1) Excluding balconies and terraces

Reduced headroom
(below 1.5m/4.92ft)

While every attempt has been made to ensure accuracy, all measurements are approximate, not to scale. This floor plan is for illustrative purposes only.

GIRAFFE360

Floor 0 Building 1



Floor 1 Building 1