



Langley Avenue Eaton Leys Milton Keynes

- Two parking spaces
- Open plan living
- Downstairs cloakroom
- Great transport links
- No onward chain
- Viewing recommended

Price £280,000 Subject To Contract

24 Parton Road, Aylesbury, Buckinghamshire, HP20 1NG
Tel: 01296 791960 / 01525 307600 | Email: Sales@laycoproperties.co.uk
<https://www.laycoproperties.co.uk>



Layco Properties proudly presents this well presented, two bedroom home, situated at the end of a small cul-de-sac on Eaton Leys. The home is offered to the market chain free and an early viewing is highly recommended. Further benefits include; two parking spaces, low maintenance garden space to the front of the property, downstairs cloakroom and gas central heating.

Accommodation:

The ground floor comprises an entrance hall with cupboard housing the gas boiler and door to the cloakroom which is fitted with a white WC and hand basin.

The living area is open plan with the kitchen and is light and airy with windows to the front and side aspects. The kitchen area is fitted with modern units including an integrated fridge/freezer, oven, electric hob and washer/dryer.

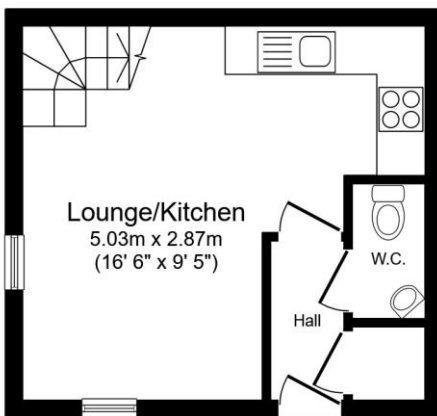
Upstairs the landing features a spacious storage cupboard and a modern shower room comprising; WC, hand basin, shower cubicle, chrome towel radiator and extractor fan.

The two bedrooms both have windows to the front aspect. Bedroom one is a generous double bedroom with a built in wardrobe.

Outside the property features two allocated parking spaces plus a low maintenance garden area to the front, ideal for a table and chairs.

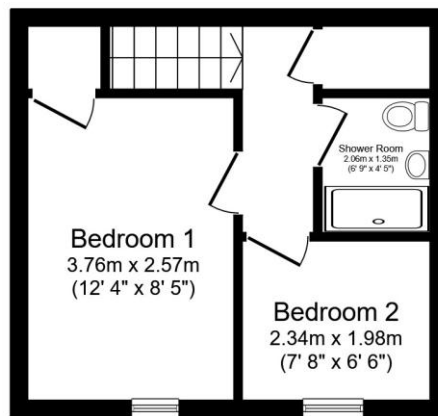
General: Freehold, Milton Keynes Council, council tax band: B, EPC: B.

Agents note: Please note the majority of photos displayed were taken when the client purchased the property brand new in 2021.



Ground Floor

Floor area 23.2 sq.m. (250 sq.ft.)



First Floor

Floor area 23.2 sq.m. (250 sq.ft.)

Total floor area: 46.5 sq.m. (500 sq.ft.)

This floor plan is for illustrative purposes only. It is not drawn to scale. Any measurements, floor areas (including any total floor area), openings and orientations are approximate. No details are guaranteed, they cannot be relied upon for any purpose and do not form any part of any agreement. No liability is taken for any error, omission or misstatement. A party must rely upon its own inspection(s). Powered by www.Propertybox.io

24 Parton Road, Aylesbury, Buckinghamshire, HP20 1NG
 Tel: 01296 791960 / 01525 307600 | Email: Sales@laycoproperties.co.uk
<https://www.laycoproperties.co.uk>

