



## The Rye

### Eaton Bray

- Barn conversion with exposed beams throughout
- Rear garden plus generous front garden!
- Bespoke handmade oak kitchen units
- Off road parking for two cars
- Ready to move in
- Available now!

Price £475,000 Subject To Contract



Layco Properties proudly presents a brand new barn conversion situated on a generous plot including a large front garden, off road parking and modern, open plan living. The property is situated in Eaton Bray and is available now!

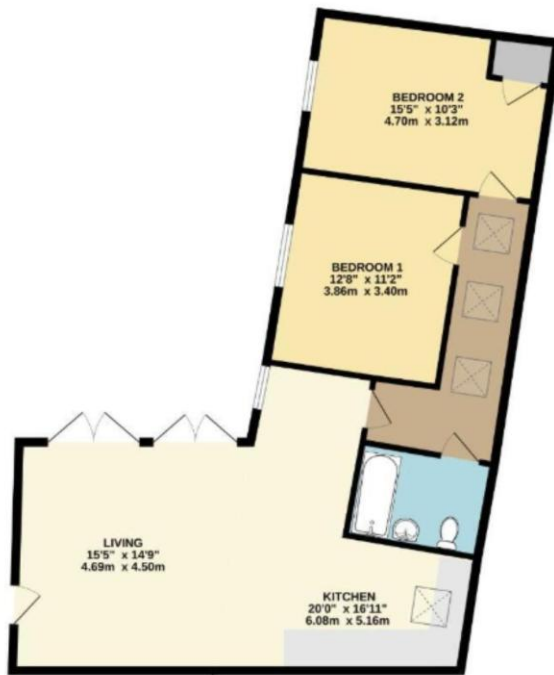
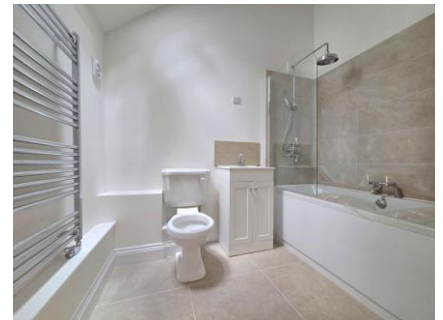
This stunning barn conversion is one of just three properties and has been converted to a high standard with open plan living, two bedrooms and a bathroom. The living room is light and airy with two sets of double doors to the rear garden. The kitchen has been fitted with bespoke handmade oak units to tie in perfectly with the style of the home.

There are two good sized bedrooms with brand new carpets and a stunning family bathroom fitted with a WC; hand basin and bath with shower above.

One of the best features of this home is the unique outside space. The property features a courtyard style rear garden with a large patio but also boasts a generous front garden that is rarely found with a barn conversion.

An internal viewing is highly recommended to fully appreciate the blend of modern living and character features that this barn conversion offers.

Agents note: as the soil has recently been seeded, external photos have been edited.



24 Parton Road, Aylesbury, Buckinghamshire, HP20 1NG  
Tel: 01296 791960 / 01525 307600 | Email: [Sales@laycoproperties.co.uk](mailto:Sales@laycoproperties.co.uk)  
<https://www.laycoproperties.co.uk>

