

The Rye

Eaton Bray

- Substantial rear garden
- Main bedroom with ensuite and courtyard garden
- Large open plan living
- Bespoke solid oak kitchen
- Generous off road parking
- Available now

Price £650,000 Subject To Contract



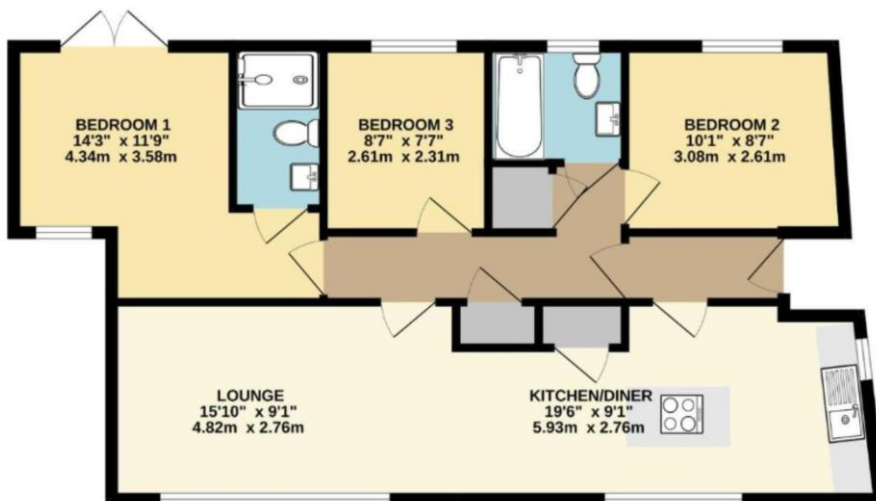
Layco Properties proudly presents this simply stunning, brand new three bedroom barn conversion, situated on a large plot with countryside views. The property has been built to a high standard and an internal viewing is highly recommended to fully appreciate this home.

The property is set well back from the road in a peaceful setting and offers generous open plan accommodation ideal for modern day living. The home enters into a hallway providing doors to all rooms. The main bedroom features an en-suite shower room and has doors out to a small courtyard ideal for a morning coffee! There are two other bedrooms and a family bathroom fitted with a WC, hand basin and bath with shower above.

One of the best features of this home is the spacious, open plan living/dining/kitchen. The kitchen is fitted with bespoke handmade oak units and the living area boasts two sets of doors leading out to a large patio ideal for entertaining.

Outside the patio area leads on to a substantial garden enclosed with post and rail fencing and provides significant space for family living. To the front of the property is generous off road parking.

Agents note: the soil has recently been seeded so external photos have been edited.



24 Parton Road, Aylesbury, Buckinghamshire, HP20 1NG
Tel: 01296 791960 / 01525 307600 | Email: Sales@laycoproperties.co.uk
<https://www.laycoproperties.co.uk>

