



Ashfield Avenue Bushey

- Two double bedrooms
- Modern kitchen and bathroom
- Off road parking
- Low maintenance rear garden
- Well presented throughout
- Excellent location for shops, schools and transport links

Price £425,000 Subject To Contract



Layco Properties proudly presents this two double bedroom home, well presented throughout boasting off road parking and conveniently situated for excellent schooling, shops and transport links. The home is ideal for first time buyers and an early viewing is highly recommended.

Accommodation:

Entrance hall: with stairs to the first floor, under stairs storage cupboard, arch way to kitchen and door to the living room.

Kitchen: fitted with a range of wall and floor mounted units with worktops above and a sink and drainer unit. There is a built in oven with gas hob and spaces for; fridge, freezer, dishwasher and washing machine. Window to the front aspect.

Living room: a generous sized reception room with window and door leading out to the rear garden.

Landing: with access to the loft (insulated and boarded), with loft ladder.

Bedroom one: a double bedroom with a large range of fitted wardrobes and window to the rear aspect.

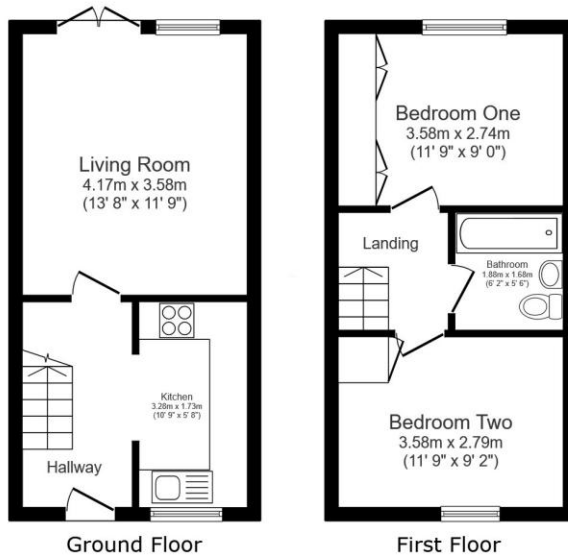
Bedroom two: a double bedroom with fitted storage cupboard and window to the front aspect.

Bathroom: fitted with a suite comprising; WC, hand basin and bath with shower attachment. Fully tiled walls, extractor fan and heated towel radiator.

Garden: a low maintenance rear garden laid with patio, borders with shingle and gated access to the rear leading to the parking area.

Parking: Allocated parking space to the side of the property.

General: Freehold, Hertsmere Borough Council, council tax band: D, EPC: C.



Total floor area: 54.0 sq.m. (581 sq.ft.)

This floor plan is for illustrative purposes only. It is not drawn to scale. Any measurements, floor areas (including any total floor area), openings and orientations are approximate. No details are guaranteed, they cannot be relied upon for any purpose and do not form any part of any agreement. No liability is taken for any error, omission or misstatement. A party must rely upon its own inspector(s). Powered by www.Propertybox.io

24 Parton Road, Aylesbury, Buckinghamshire, HP20 1NG
 Tel: 01296 791960 / 01525 307600 | Email: Sales@laycoproperties.co.uk
<https://www.laycoproperties.co.uk>

