



15 Wheelwright Close, Eastbourne, BN22 0XG

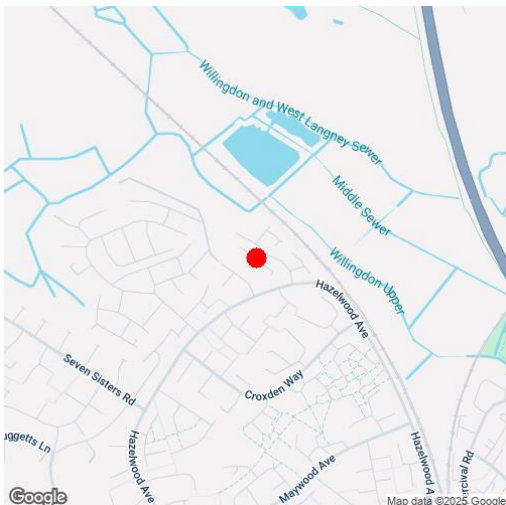
Price £375,000 | Freehold

LS Leaper
Stanbrook

TOWN CENTRE OFFICE
01323 416716

MEADS STREET OFFICE
01323 737962

A well presented four bedroom detached house located at the end of a cul-de-sac within a quiet residential location benefiting from driveway and integral garage. This delightful property is presented to a very nice standard and boasts accommodation comprising entrance hall, sitting room with archway opening to a dining room, kitchen with variety of appliances and matching wall and base units with work surfaces, conservatory, ground floor wc, first floor landing, four good size bedrooms, family bathroom and en-suite shower room. The property has the convenience of driveway to the front leading to an integral garage and to the rear there is a secluded garden with area of lawn, patio and with a variety of plants, shrubs and trees. Additional benefits include double glazing and gas central heating.





At a Glance:

- Four bedroom detached house
- Quiet cul-de-sac location
- Sitting room with adjoining dining room
- Kitchen
- Conservatory
- Ground floor wc
- Family bathroom
- En-suite shower room
- Secluded gardens
- Driveway and garage

Accommodation:

ENTRANCE HALL

SITTING ROOM

15'1" (4.6m) x 10'10" (3.3m)

DINING ROOM

10'1" (3.07m) x 8'8" (2.64m)

CONSERVATORY

14'2" (4.32m) x 10'4" (3.15m)

KITCHEN

13'6" (4.11m) x 8'6" (2.59m)

WC

FIRST FLOOR LANDING

BEDROOM 1

13'2" (4.01m) x 11'11" (3.63m)

EN-SUITE SHOWER ROOM

BEDROOM 2

11'9" (3.58m) x 8'10" (2.69m)

BEDROOM 3

12'0" (3.66m) x 8'8" (2.64m)

BEDROOM 4

11'11" (3.63m) x 8'0" (2.44m)

BATHROOM

OUTSIDE:

DRIVEWAY

GARAGE

REAR GARDEN

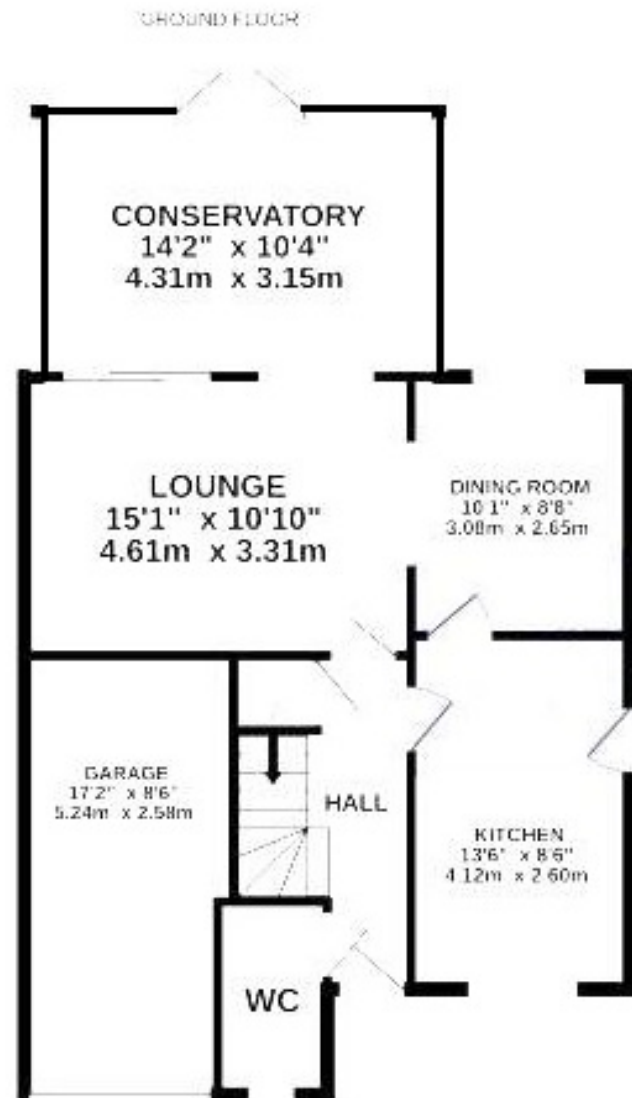
COUNCIL TAX:

"E"

EPC:

"D"





Ref: 1

Whilst every care has been taken in the preparation of these particulars, neither the agents nor the vendor accept any responsibility for error or omission, nor do they constitute an offer or contract. Please note we have not tested any apparatus, fixtures, fittings, or services. Interested parties must undertake their own investigation into the working order of these items. All measurements are approximate whilst photographs and floorplans are provided for guidance only.

LS Leaper Stanbrook

5 Gildredge Road, Eastbourne BN21 4RB
01323 416716

28 Meads Street, Eastbourne BN20 7QY
01323 737962

www.leaperstanbrook.co.uk

sales@leaperstanbrook.co.uk