



Cheriton, 312 Willingdon Road, Eastbourne, BN20 9JT

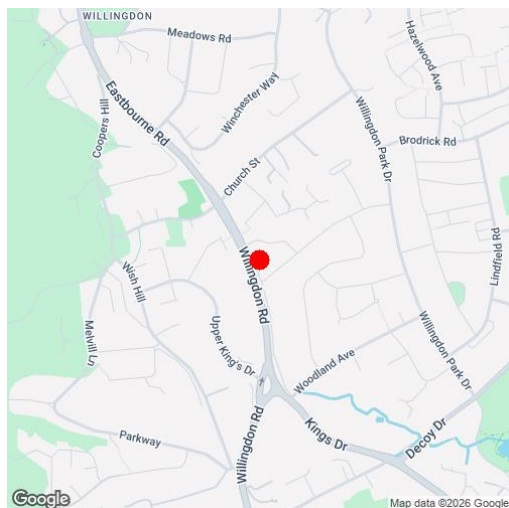
Guide Price £500,000 | Freehold

LS **Leaper
Stanbrook**

TOWN CENTRE OFFICE
01323 416716

MEADS STREET OFFICE
01323 737962

A pleasing three/four bedroom detached chalet-style residence of individual design, set well back from the road in the Willingdon area of Eastbourne, available with no onward chain. Cheriton is accessed via a slip road adjacent to Willingdon Road and provides well-proportioned and versatile accommodation over two floors. The ground floor comprises a generous sitting room, a fitted kitchen with a range of matching wall and base units together with an integrated fridge and freezer. There are two ground floor bedrooms one of which could be used as a dining room together with a shower room and separate cloakroom//wc. The two double first floor bedrooms both have en-suite shower rooms and enjoy views to The South Downs. The house is set within manageable gardens which are principally laid to lawn: the rear extends to approximately 40' with a brick-built summerhouse, whilst a driveway provides ample off-road parking and access to the double length garage at the front. Although the house would benefit from some modernisation and redecoration it has gas central heating and sealed unit double glazing and one could easily move in and make improvements over time. Located within two hundred yards of Church Street, the house provides easy access to The South Downs, whilst there are two popular local pubs and a Thai restaurant within a few hundred yards. Eastbourne town centre, served by buses that stop nearby, is approximately 2.5 miles away.





At a Glance:

- Detached chalet-style house of individual design
- Three/four bedrooms
- One/two reception rooms
- Three shower rooms (two en-suite)
- Double length garage
- Manageable gardens
- Gas central heating
- Sealed unit double glazing
- No onward chain

Accommodation:

HALL

CLOAKROOM / WC

LIVING ROOM

19'9" (6.02m) x 12'0" (3.66m)

KITCHEN

11'9" (3.58m) x 10'9" (3.28m) Plus Recess

COVERED WAY

13'2" (4.01m) x 2'6" (0.76m)

DINING ROOM / BEDROOM 4

12'0" (3.66m) x 10'2" (3.1m) Plus Recess

BEDROOM 3

14'9" (4.5m) x 9'0" (2.74m) Plus Recess

SHOWER ROOM

FIRST FLOOR LANDING

BEDROOM 1

16'0" (4.88m) x 12'0" (3.66m)

EN-SUITE SHOWER ROOM

BEDROOM 2

16'0" (4.88m) x 12'0" (3.66m) Access to large loft space

EN-SUITE SHOWER ROOM

OUTSIDE:

GARDENS FRONT AND REAR

DOUBLE LENGTH GARAGE

29'2" (8.89m) x 8'6" (2.59m)

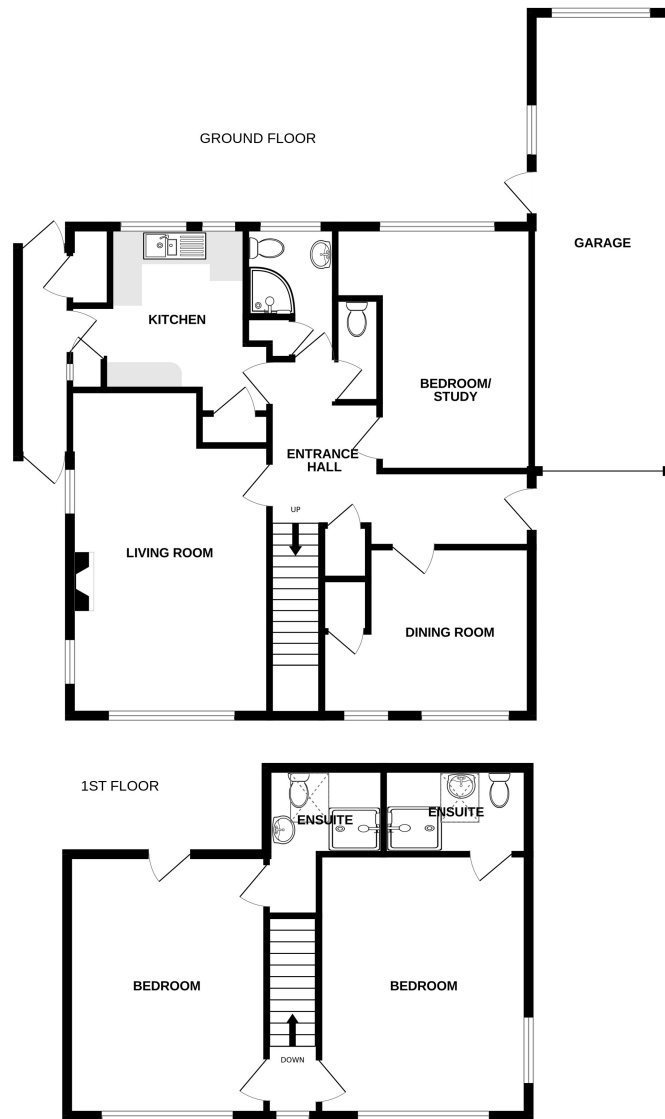
COUNCIL TAX:

Band 'E'

EPC:

'D'





Whilst every attempt has been made to ensure the accuracy of the floorplan contained here, measurements of doors, windows, rooms and any other items are approximate and no responsibility is taken for any error, omission or mis-statement. This plan is for illustrative purposes only and should be used as such by any prospective purchaser. The services, systems and appliances shown have not been tested and no guarantee as to their operability or efficiency can be given.
 Made with Metropix ©2026

Ref: 1

Whilst every care has been taken in the preparation of these particulars, neither the agents nor the vendor accept any responsibility for error or omission, nor do they constitute an offer or contract. Please note we have not tested any apparatus, fixtures, fittings, or services. Interested parties must undertake their own investigation into the working order of these items. All measurements are approximate whilst photographs and floorplans are provided for guidance only.



5 Gildredge Road, Eastbourne BN21 4RB
01323 416716

28 Meads Street, Eastbourne BN20 7QY
01323 737962

website
www.leaperstanbrook.co.uk

email
sales@leaperstanbrook.co.uk