



Heath Road, Bebington

£280,000

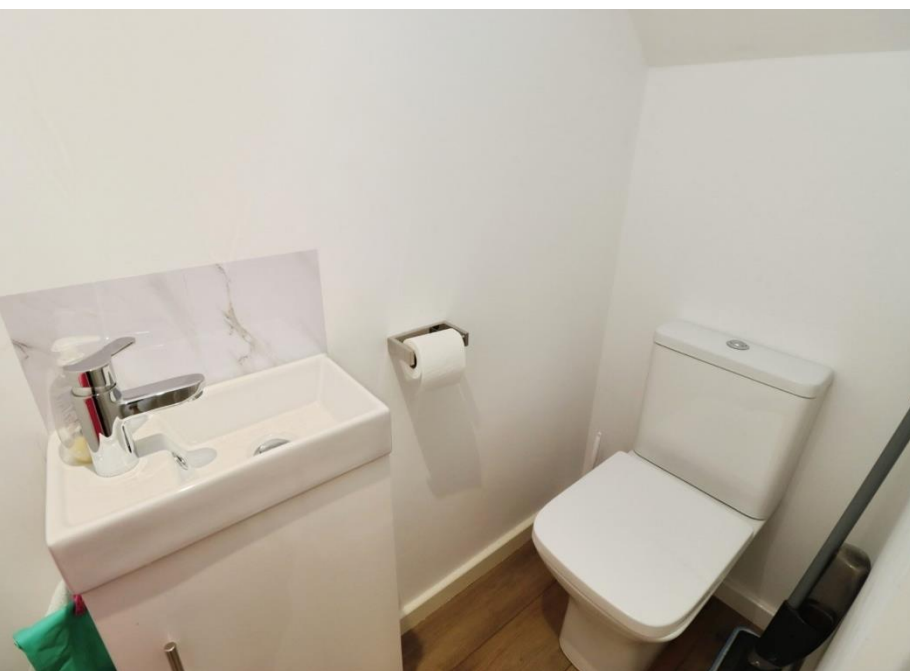


LESLEY HOOKS
ESTATE AGENTS





Tucked away in a peaceful spot yet right in the heart of Bebington, this immaculate semi-detached home is the perfect blend of privacy and convenience. Recently refurbished from top to bottom, it's ready for you to simply move straight in and enjoy. Light and airy throughout, the ground floor offers a welcoming hallway with stylish laminate flooring, a handy downstairs WC, a bright lounge and a separate dining room, both with laminate flooring and plenty of space to relax or entertain. There is a sleek fitted kitchen, complete with a full range of integrated appliances including a fridge freezer, washing machine, dishwasher and tumble dryer – everything you need for modern living. Upstairs, you'll find three comfortable bedrooms, the master having fitted wardrobes and a beautifully finished bathroom with a contemporary three-piece suite, tiled flooring and shower board walls. A drop down ladder from bedroom two gives access to the boarded loft space. Outside, the front garden adds to the home's charm with steps leading down to Heath Road, while to the rear you'll find a driveway providing off-road parking along with an EV charger and a garage for extra storage or convenience. With uPVC double glazing, combi-fired gas central heating and a location just a short stroll from local shops, schools and excellent transport links, this lovely home really does tick all the boxes. Council tax band C. Freehold.



Hallway

12'2" (3.71m) x 6'0" (1.83m)

Downstairs WC

5'0" (1.52m) x 2'7" (0.79m)

Lounge

14'0" (4.27m) x 12'6" (3.81m)

Dining Room

10'11" (3.33m) x 10'0" (3.05m)

Kitchen

10'10" (3.3m) x 8'5" (2.57m)

Bedroom One

14'0" (4.27m) x 11'5" (3.48m) Into
Wardrobe Recess

Bedroom Two

10'11" (3.33m) x 11'5" (3.48m)

Bedroom Three

9'1" (2.77m) Max x 7'3" (2.21m)

Bathroom

7'8" (2.34m) x 7'0" (2.13m)







GROUND FLOOR
626 sq.ft. (58.1 sq.m.) approx.



1ST FLOOR
457 sq.ft. (42.5 sq.m.) approx.



TOTAL FLOOR AREA: 1083 sq.ft. (100.6 sq.m.) approx.
Whilst every attempt has been made to ensure the accuracy of the floorplan contained here, measurements of doors, windows, rooms and any other items are approximate and no responsibility is taken for any error, omission or mis-statement. This plan is for illustrative purposes only and should be used as such by any prospective purchaser. The services, systems and appliances shown have not been tested and no guarantee as to their operability or efficiency can be given.
Made with Metagix ©2025

Contact Us:

0151 644 6000

lesley@lesleyhooks.co.uk

6 Church Road, Bebington,

Wirral, Merseyside, CH63 7PH

Disclaimer: Whilst these details are thought to be correct, their accuracy cannot be guaranteed and do not form part of any contract. It should be noted that we have not tested any fixtures, fittings, equipment, apparatus or services, therefore we cannot verify that they are in working order of fit for purpose. Solicitors should be used to confirm that any moveable items described within these details are in fact part of the sale agreement. While we try to ensure measurements are correct they are not guaranteed and purchasers are advised to take their own measurements before ordering any fixtures and fittings. Please note: if you are buying a leasehold property, please ensure that all details and conditions of the lease are checked with your solicitor prior to you incurring any costs as additional fees could be incurred for items such as leasehold packs.