



Wingate Road, Eastham

£260,000



LESLEY HOOKS
ESTATE AGENTS





Step inside this beautifully presented, light and airy semi-detached home and you'll immediately feel its warm, welcoming charm. Ready to move straight into, the property oozes style and character while offering the comfort of modern living, including uPVC double glazing and combi-fired gas central heating throughout. The thoughtfully arranged accommodation begins with a porch leading into a hallway, opening through to a spacious lounge/dining room. Here, a feature fireplace creates a cosy focal point, while double doors invite natural light in and provide seamless access to the rear garden—perfect for both everyday living and entertaining. The fitted kitchen completes the ground floor, offering a practical yet attractive space to cook and gather. Upstairs, you'll find three well-proportioned bedrooms alongside a stylish four-piece bathroom, finished to a high standard and designed with relaxation in mind. Outside, the home continues to impress. A delightful paved garden welcomes you at the front, while to the side there is a garage and driveway providing ample parking. To the rear lies a truly divine garden—beautifully maintained and featuring a charming summer house, ideal for relaxing, working from home, or enjoying long summer evenings. Ideally located within easy reach of local shops, schools, and excellent transport links, this is a home that perfectly balances style, comfort, and convenience. Council tax band B. Freehold.



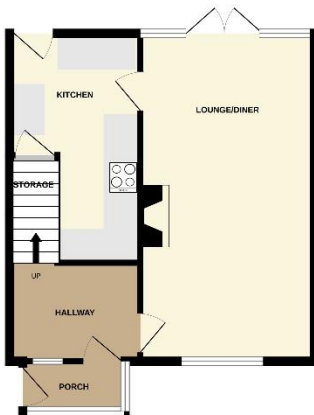
- Porch**
6'7" (2.01m) x 3'2" (0.97m)
- Hallway**
8'5" (2.57m) x 5'11" (1.8m)
- Lounge Dining Room**
21'1" (6.43m) x 11'3" (3.43m)
- Kitchen**
14'9" (4.5m) Max x 8'5" (2.57m) Max
- Bedroom One**
11'4" (3.45m) x 11'1" (3.38m)
- Bedroom Two**
11'7" (3.53m) x 9'11" (3.02m)
- Bedroom Three**
8'6" (2.59m) x 8'3" (2.51m)
- Bathroom**
8'3" (2.51m) x 4'11" (1.5m)







GROUND FLOOR
428 sq.ft. (39.8 sq.m.) approx.



1ST FLOOR
414 sq.ft. (38.4 sq.m.) approx.



TOTAL FLOOR AREA - 842 sq.ft. (78.2 sq.m.) approx.

Whilst every attempt has been made to ensure the accuracy of the description contained here, measurements of areas, volumes, tones and/or other items are approximate and no responsibility is taken for any error, omission or mis-statement. This plan is for illustrative purposes only and should be used as such by any prospective purchaser. The services, systems and appliances shown have not been tested and no guarantee is given as to their operability or efficiency can be given. Please visit www.lesleyhooks.co.uk

Contact Us:

0151 334 5875

rachael@lesleyhooks.co.uk

23 Allport Lane, Bromborough,
Wirral, Merseyside, CH62 7HH

Disclaimer: Whilst these details are thought to be correct, their accuracy cannot be guaranteed and do not form part of any contract. It should be noted that we have not tested any fixtures, fittings, equipment, apparatus or services, therefore we cannot verify that they are in working order of fit for purpose. Solicitors should be used to confirm that any moveable items described within these details are in fact part of the sale agreement. While we try to ensure measurements are correct they are not guaranteed and purchasers are advised to take their own measurements before ordering any fixtures and fittings. Please note: if you are buying a leasehold property, please ensure that all details and conditions of the lease are checked with your solicitor prior to you incurring any costs as additional fees could be incurred for items such as leasehold packs.