



Bridle Park, Bromborough

£160,000



LESLEY HOOKS
ESTATE AGENTS





Welcome to Bridle Park, an exquisite retirement bungalow designed exclusively for individuals aged 55 and above. Nestled in a serene neighborhood, this beautiful residence offers a peaceful and comfortable lifestyle for those seeking a well-deserved retirement. Upon entering the bungalow from the porch, you are greeted by a hallway with a deep built in storage cupboard that houses the combi boiler. Off the hallway, you'll find the lounge dining room—a delightful space designed for relaxation and entertaining. This room provides ample space for hosting family and friends or simply enjoying a quiet evening at home. Connected to the lounge dining room is a smartly fitted kitchen, complete with modern appliances and sleek finishes. Whether you're a seasoned chef or simply enjoy cooking up a delicious meal, this kitchen provides a functional and stylish space to unleash your culinary creativity. The thoughtfully designed layout ensures that everything you need is within easy reach, making meal preparation a breeze.

As you continue your tour, you'll discover two double bedrooms that have been meticulously designed with comfort and relaxation in mind. Each bedroom boasts generous proportions, ensuring ample space for your furniture and personal belongings. These bedrooms provide a sanctuary where you can retreat and unwind after a fulfilling day. Adjacent to the bedrooms, a well-appointed shower room awaits, featuring modern fixtures and tasteful decor. With its contemporary design, the shower room exudes elegance and provides a luxurious space for your daily grooming needs. The walk-in shower offers convenience and accessibility, ensuring a safe and comfortable experience for every residence. Bridle Park is blessed with beautifully maintained communal gardens that provide an oasis of tranquility. The communal gardens offer a wonderful opportunity to enjoy the great outdoors and foster a sense of community among neighbours. Parking facilities are available to residents, ensuring convenience and ease of access for those with vehicles. One of the remarkable features of Bridle Park is the absence of an onward chain, offering a stress-free transition into your new home. You can move in and begin enjoying the benefits of this beautiful retirement bungalow without any delays or complications. Don't miss this opportunity to embrace a relaxed and fulfilling retirement lifestyle at Bridle Park. Ideally situated, the property is within walking distance of Bromborough village and local transport links. Council tax band A. Leasehold subject to a monthly service charge of £110 per month and there are 65 years left on the lease. PLEASE NOTE, PETS ARE NOT PERMITTED.



Porch

6'0" (1.83m) x 3'11" (1.19m)

Hallway

8'11" (2.72m) Max x 6'5" (1.96m)
Max

Lounge Dining Room

16'2" (4.93m) x 10'5" (3.18m)

Kitchen

8'11" (2.72m) x 7'7" (2.31m)

Bedroom One

13'1" (3.99m) x 10'7" (3.23m)

Bedroom Two

9'10" (3m) x 8'11" (2.72m)

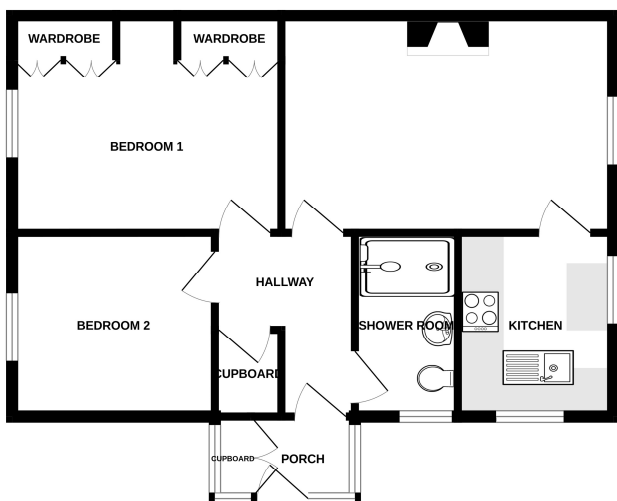
Shower Room

8'11" (2.72m) x 5'0" (1.52m)

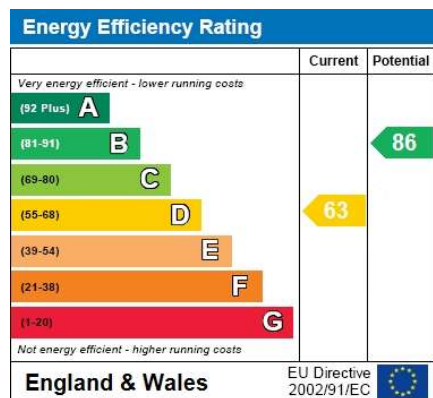




GROUND FLOOR
590 sq.ft. (54.8 sq.m.) approx.



TOTAL FLOOR AREA : 590 sq.ft. (54.8 sq.m.) approx.
While every effort has been made to ensure the accuracy of the foregoing information, measurements of floor, ceiling, rooms and any other parts are approximate and no responsibility is taken for any error, omission or misstatement. This plan is for guidance purposes only and should be used as a guide only, prospective purchaser. The services, systems and appliances shown have not been tested and no guarantee as to their accuracy or efficiency can be given.
Issue 100 - 10/2020



Contact Us:

0151 334 5875

lesley@lesleyhooks.co.uk

23 Allport Lane, Bromborough,
Wirral, Merseyside, CH62 7HH

Disclaimer: Whilst these details are thought to be correct, their accuracy cannot be guaranteed and do not form part of any contract. It should be noted that we have not tested any fixtures, fittings, equipment, apparatus or services, therefore we cannot verify that they are in working order of fit for purpose. Solicitors should be used to confirm that any moveable items described within these details are in fact part of the sale agreement. While we try to ensure measurements are correct they are not guaranteed and purchasers are advised to take their own measurements before ordering any fixtures and fittings. Please note: if you are buying a leasehold property, please ensure that all details and conditions of the lease are checked with your solicitor prior to you incurring any costs as additional fees could be incurred for items such as leasehold packs.