



Craigleigh Grove, Eastham

£240,000



LESLEY HOOKS
ESTATE AGENTS





This traditional three-bedroom semi-detached house offers a perfect blend of comfort and convenience. Boasting a warm and welcoming exterior, the residence is enhanced by a thoughtful extension, providing an extended lounge/sitting room catering to the needs of modern living. Upon entering the home, you are greeted by a cozy atmosphere, characteristic of traditional design, the lounge and the extended sitting room beckons you with its spacious layout and abundant natural light. This versatile space serves dual purposes, offering a comfortable setting for relaxation while also serving as an ideal home office for those who value the convenience of working from home. The kitchen has ample storage, modern appliances, and a functional layout and inviting flow with door through to the garden. Also a conservatory is an added feature for further relaxation. To the first floor there are three well proportioned bedrooms with built in wardrobes, there is also a shower room, with contemporary fixtures, completes the upper level. One of the stand out features is its expansive rear garden, a green haven that invites outdoor activities. Situated close to Mill Park Drive, residents benefit from easy access to a range of amenities. From local shops to restaurants and recreational facilities, everything needed for a comfortable lifestyle is within reach. In summary, this traditional three-bedroom semi-detached home with an extended sitting room/office offers a harmonious blend of classic charm and modern functionality.



Porch

7'9" (2.36m) x 2'9" (0.84m)

Hallway

8'6" (2.59m) x 7'9" (2.36m)

Lounge

19'2" (5.84m) x 10'11" (3.33m)

Sitting Room

10'9" (3.28m) x 8'5" (2.57m)

Kitchen

19'0" (5.79m) x 7'6" (2.29m)

Conservatory

10'3" (3.12m) x 8'4" (2.54m)

Bedroom One

11'0" (3.35m) x 10'6" (3.2m)

Bedroom Two

10'6" (3.2m) x 8'10" (2.69m)

Bedroom Three

8'0" (2.44m) x 7'3" (2.21m)

Shower Room

7'7" (2.31m) x 7'4" (2.24m)

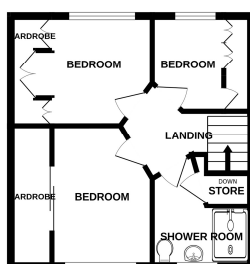
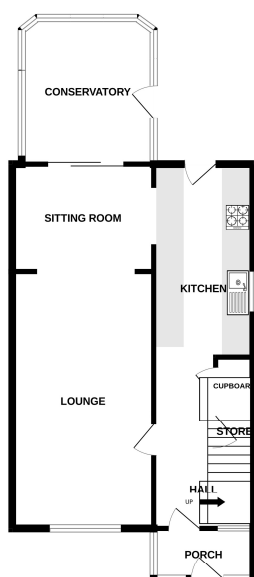






GROUND FLOOR

1ST FLOOR



Contact Us:

0151 334 5875

lesley@lesleyhooks.co.uk

23 Allport Lane, Bromborough,
Wirral, Merseyside, CH62 7HH

While every effort has been made to ensure the accuracy of the foregoing description, measurements, or details, Lesley Hooks and any other agents are not responsible for any errors, omissions, or misstatements. This plan is for illustrative purposes only and should be used as a guide only. Prospective purchasers are advised to take their own measurements before ordering any fixtures and fittings. Please note: if you are buying a leasehold property, please ensure that all details and conditions of the lease are checked with your solicitor prior to you incurring any costs as additional fees could be incurred for items such as leasehold packs.

Disclaimer: Whilst these details are thought to be correct, their accuracy cannot be guaranteed and do not form part of any contract. It should be noted that we have not tested any fixtures, fittings, equipment, apparatus or services, therefore we cannot verify that they are in working order of fit for purpose. Solicitors should be used to confirm that any moveable items described within these details are in fact part of the sale agreement. While we try to ensure measurements are correct they are not guaranteed and purchasers are advised to take their own measurements before ordering any fixtures and fittings. Please note: if you are buying a leasehold property, please ensure that all details and conditions of the lease are checked with your solicitor prior to you incurring any costs as additional fees could be incurred for items such as leasehold packs.