



Mill Lane, Willaston

£800,000



LESLEY HOOKS
ESTATE AGENTS





Nestled in one of Willaston's most sought-after roads, Thorncroft is a truly exceptional property that offers the perfect blend of privacy, charm, and potential. Tucked off the beaten path, this delightful dormer bungalow sits on a magnificent plot of almost 2 acres, providing a rare opportunity to own a large family home with expansive gardens all around. Beyond the home's traditional garden lies a lush, open field, offering additional space perfect for those looking to enjoy outdoor pursuits.

The home itself is generously sized, offering ample living space with a well-thought-out layout. The ground floor features a welcoming hallway leading to three reception rooms, offering plenty of versatility to suit a range of living arrangements. A fitted kitchen, large utility room, and a bedroom with its own ensuite bathroom complete the ground floor layout.

Upstairs, you will find three further bedrooms, with the master being particularly impressive in both size and design. It also boasts an ensuite bathroom, while the family bathroom serves the other two bedrooms.

While the property may benefit from some cosmetic updating, it has been impeccably looked after and the potential for personalisation offers a fantastic opportunity for those looking to create their dream home. Outside, the property truly shines, with a sweeping driveway offering ample parking space and access to three garages. The large gardens surrounding the property provide a stunning setting, ideal for entertaining or simply enjoying the outdoors. With its sought-after location, superb plot size, and endless possibilities, Thorncroft is an unmissable opportunity for those looking for a unique and desirable property in Willaston.



Lounge

15'10" (4.83m) x 12'9" (3.89m)

Sitting Room

15'9" (4.8m) x 14'3" (4.34m)

Dining Room

10'5" (3.18m) x 9'0" (2.74m)

Kitchen

12'2" (3.71m) x 10'11" (3.33m)

Utility

8'9" (2.67m) x 7'10" (2.39m)

Downstairs Bedroom Two

14'3" (4.34m) x 12'2" (3.71m)

En-Suite

8'7" (2.62m) x 5'6" (1.68m)

Bedroom One

18'0" (5.49m) x 15'10" (4.83m) Max

En-Suite

10'9" (3.28m) x 6'3" (1.91m)

Bedroom Three

12'2" (3.71m) x 10'7" (3.23m)

Bedroom Four

12'0" (3.66m) x 9'5" (2.87m)

Bathroom

9'5" (2.87m) x 7'10" (2.39m)

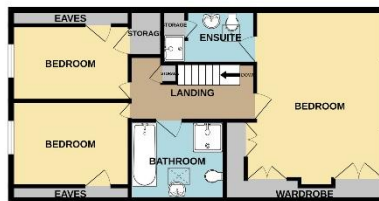






GROUND FLOOR

1ST FLOOR



Whilst every attempt has been made to ensure the accuracy of the floorplan contained here, measurements of doors, windows, rooms and any other items are approximate and no responsibility is taken for any error, omission or mis-statement. This plan is for illustrative purposes only and should be used as such by any prospective purchaser. The services, systems and appliances shown have not been tested and no guarantee as to their operability or efficiency can be given.
Made with Metropix (2020)

Contact Us:

0151 334 5875

lesley@lesleyhooks.co.uk

23 Allport Lane,

Bromborough, Wirral,

Merseyside, CH62 7HH

Disclaimer: Whilst these details are thought to be correct, their accuracy cannot be guaranteed and do not form part of any contract. It should be noted that we have not tested any fixtures, fittings, equipment, apparatus or services, therefore we cannot verify that they are in working order of fit for purpose. Solicitors should be used to confirm that any moveable items described within these details are in fact part of the sale agreement. While we try to ensure measurements are correct they are not guaranteed and purchasers are advised to take their own measurements before ordering any fixtures and fittings. Please note: if you are buying a leasehold property, please ensure that all details and conditions of the lease are checked with your solicitor prior to you incurring any costs as additional fees could be incurred for items such as leasehold packs.