



# Terminus Road, Bromborough

£200,000



LESLEY HOOKS  
ESTATE AGENTS







This charming three-bedroom end-terrace home offers spacious rooms throughout, making it an ideal choice for families or those seeking extra living space.

Upon entering, you are welcomed by a bright and airy entrance hall leading to a generous lounge, perfect for relaxation. The heart of the home is the open-plan kitchen family dining room, providing ample space for cooking, dining, and entertaining.

Upstairs, there are three well-proportioned bedrooms, along with a bathroom featuring a three-piece suite, including a stylish corner bath.



Externally, the property boasts a good-sized plot. The front and side gardens offer plenty of outdoor space, while the rear features a patio seating area and a small garden that forms a distinctive V shape, perfect for enjoying outdoor moments.

This well-presented home combines space, comfort, and a great layout—an excellent opportunity for a variety of buyers.

#### **Entrance Hall**

5'2" (1.57m) x 2'11" (0.89m)

#### **Lounge**

17'9" (5.41m) x 11'11" (3.63m)

#### **Kitchen**

17'11" (5.46m) x 9'8" (2.95m)

#### **Bedroom One**

12'1" (3.68m) x 10'6" (3.2m)

#### **Bedroom Two**

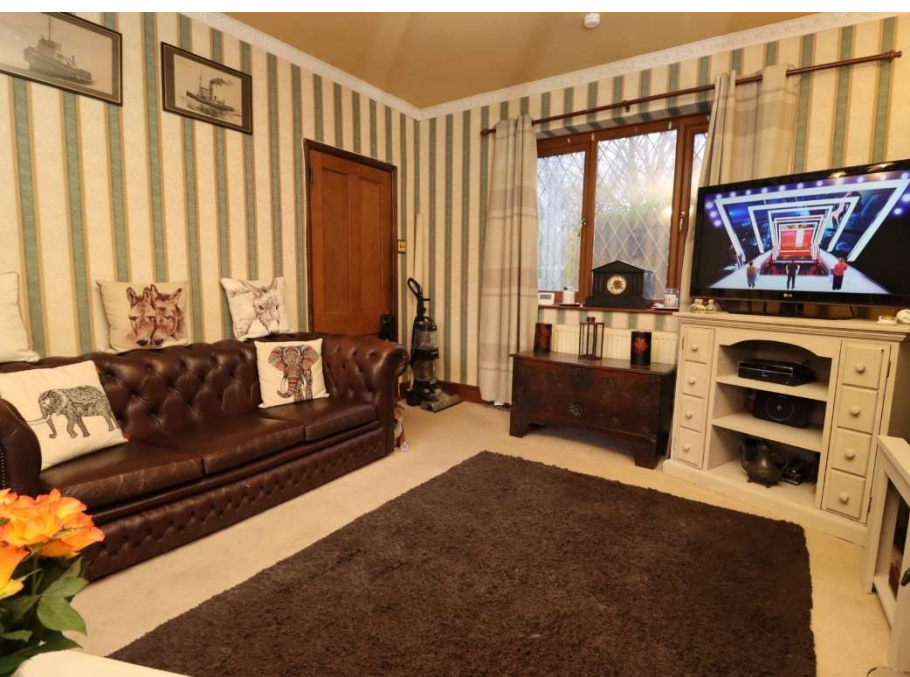
11'4" (3.45m) x 12'0" (3.66m)

#### **Bedroom Three**

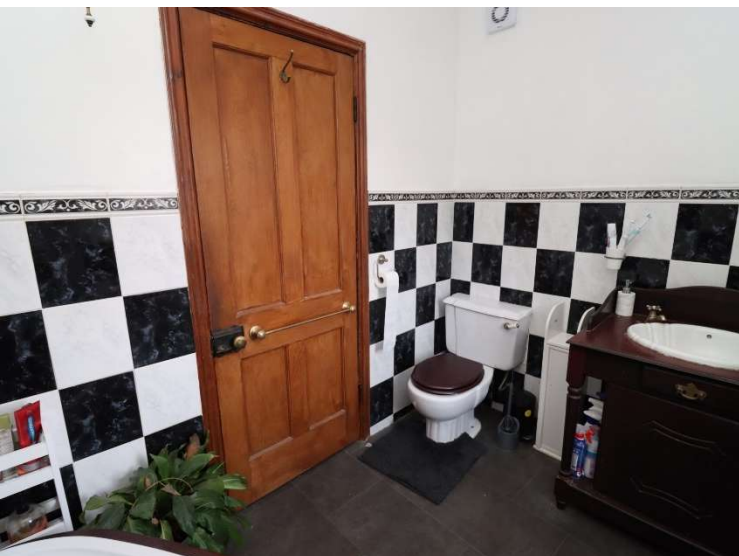
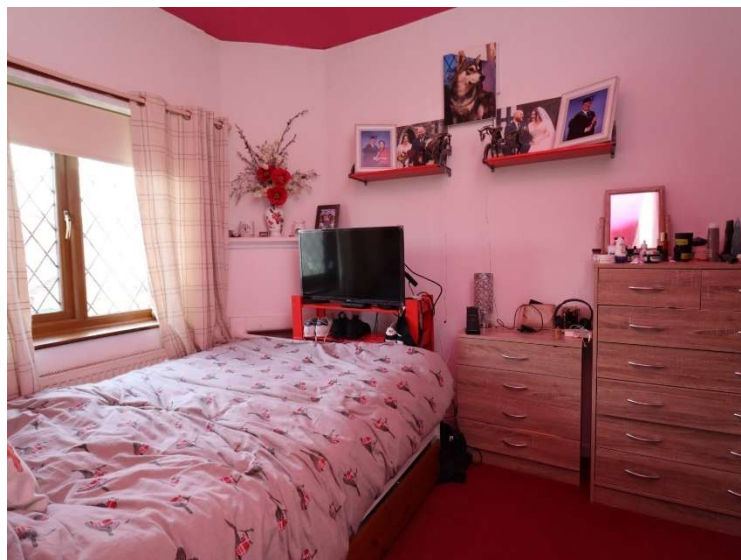
8'6" (2.59m) x 7'2" (2.18m)

#### **Bathroom**

8'6" (2.59m) x 5'8" (1.73m)





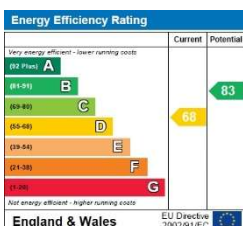
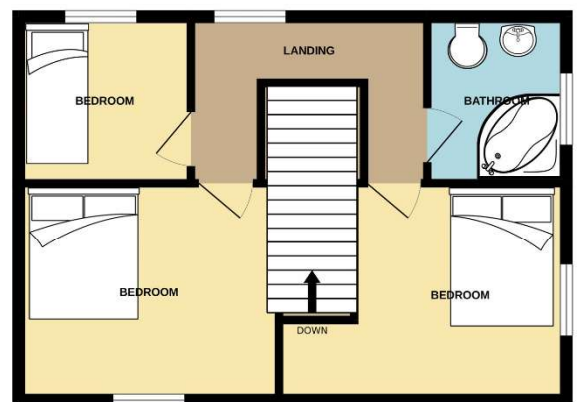
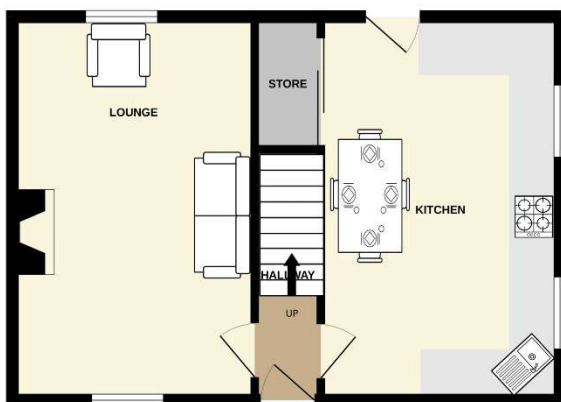






GROUND FLOOR  
443 sq.ft. (41.2 sq.m.) approx.

1ST FLOOR  
449 sq.ft. (41.8 sq.m.) approx.



TOTAL FLOOR AREA: 892 sq.ft. (82.9 sq.m.) approx.

Whilst every attempt has been made to ensure the accuracy of the floorplan contained here, measurements of doors, windows, rooms and any other items are approximate and no responsibility is taken for any error, omission or mis-statement. This plan is for illustrative purposes only and should be used as such by any prospective purchaser. The services, systems and appliances shown have not been tested and no guarantee as to their operability or efficiency can be given.

Made with Metropax ©2025

Disclaimer: whilst these details are thought to be correct, their accuracy cannot be guaranteed and do not form part of any contract. It should be noted that we have not tested any fixtures, fittings, equipment, apparatus or services, therefore we cannot verify that they are in working order of fit for purpose. Solicitors should be used to confirm that any moveable items described within these details are in fact part of the sale agreement. While we try to ensure measurements are correct they are not guaranteed and purchasers are advised to take their own measurements before ordering any fixtures and fittings. Please note: if you are buying a leasehold property, please ensure that all details and conditions of the lease are checked with your solicitor prior to you incurring any costs as additional fees could be incurred for items such as leasehold packs.