



# Clifton Avenue, Eastham

£185,000



**LESLEY HOOKS**  
ESTATE AGENTS







Nestled in a friendly neighborhood, this charming mid-terrace home has been cherished for years, filled with love, laughter, and treasured memories. Now, it awaits a new family to create their own special moments within its welcoming walls.

As you step through the entrance hall, you are greeted by a cozy lounge, perfect for relaxing after a long day with feature fireplace. The kitchen offers ample space for cooking and gathering with breakfast bar. There is a door onto the passageway with a handy downstairs wc, additional storage space and a brick built garage/store.

Upstairs, the first floor features three comfortable bedrooms, providing plenty of room for a growing family or visiting guests. A well-sized shower room completes the layout, offering both convenience and comfort.

Outside, the rear garden provides a peaceful retreat, ideal for summer barbecues or a quiet morning coffee.

This much-loved home is ready for its next chapter—could it be yours? Come and see all it has to offer!



#### **Hallway**

10'2" (3.1m) x 9'10" (3m)

#### **Lounge**

18'5" (5.61m) x 12'5" (3.78m)

#### **Kitchen**

10'11" (3.33m) x 10'0" (3.05m)

#### **Downstairs WC**

6'0" (1.83m) x 2'10" (0.86m)

#### **Bedroom One**

12'5" (3.78m) x 12'1" (3.68m)

#### **Bedroom Two**

13'0" (3.96m) x 12'7" (3.84m)

#### **Bedroom Three**

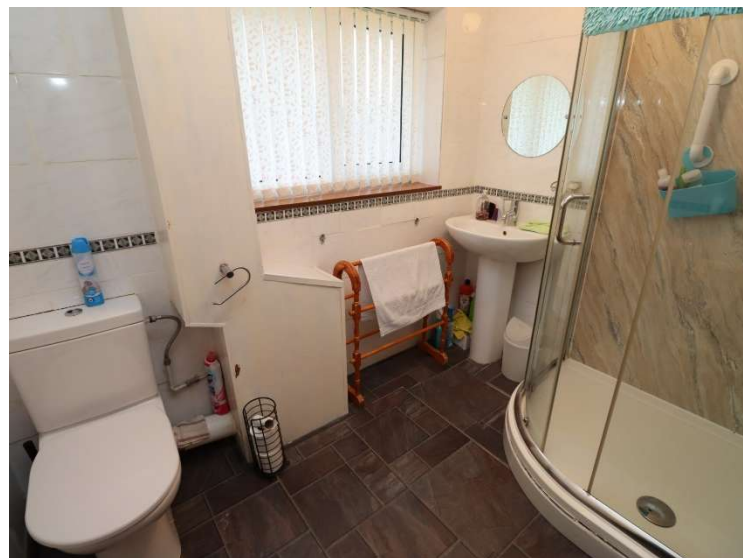
10'5" (3.18m) x 9'8" (2.95m)

#### **Bathroom**

8'4" (2.54m) x 6'3" (1.91m)











TOTAL FLOOR AREA: 1139 sq ft (105.8 sq m) approx.

What every interest has been made to ensure the accuracy of the things contained here, none, however, of them, whether, in whole or in any other items and information of the responsibility is taken for any error, omission or misstatement. This plan is for illustrative purposes only and should be used as such by any prospective purchaser. The services, systems and appliances shown have not been tested and no guarantee as to their operability or efficiency can be given.

Disclaimer: Whilst these details are thought to be correct, their accuracy cannot be guaranteed and do not form part of any contract. It should be noted that we have not tested any fixtures, fittings, equipment, apparatus or services, therefore we cannot verify that they are in working order of fit for purpose. Solicitors should be used to confirm that any moveable items described within these details are in fact part of the sale agreement. While we try to ensure measurements are correct they are not guaranteed and purchasers are advised to take their own measurements before ordering any fixtures and fittings. Please note: if you are buying a leasehold property, please ensure that all details and conditions of the lease are checked with your solicitor prior to you incurring any costs as additional fees could be incurred for items such as leasehold packs.