



Thornleigh Avenue, Eastham

£200,000



LESLEY HOOKS
ESTATE AGENTS





Set back behind a larger than average driveway this semi detached house is offered for sale with no onward chain. Having uPVC double glazing and gas central heating the layout comprises entrance hallway, lounge through dining room, kitchen and a handy passage way that can be used for additional storage needs or white goods. Upstairs there are three bedrooms and a family bathroom. Outside the property there is a garden and generous driveway with off road parking for several cars to the front. To the rear there is a good size garden and a shed. The property is within easy reach of local amenities including a selection of shops along Mill Park Drive and for a more varied range Bromborough Village is a short drive away. Local primary and secondary schools are within easy reach. Eastham Rake train station is a five minute drive away and there are numerous bus routes near by.



Hallway

8'5" (2.57m) x 7'7" (2.31m)

Lounge/Diner

19'7" (5.97m) x 10'8" (3.25m)

Kitchen

10'3" (3.12m) x 7'7" (2.31m)

Bedroom One

11'0" (3.35m) x 9'0" (2.74m)

Bedroom Two

7'7" (2.31m) x 7'3" (2.21m)

Bedroom Three

10'7" (3.23m) x 10'3" (3.12m)

Bathroom

7'7" (2.31m) x 7'6" (2.29m)

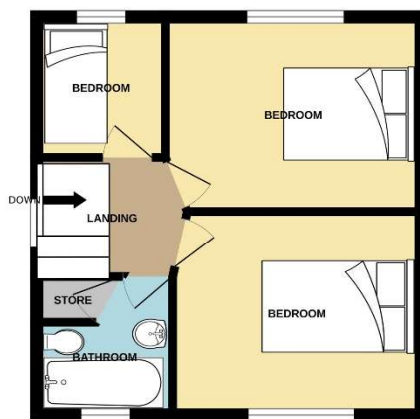
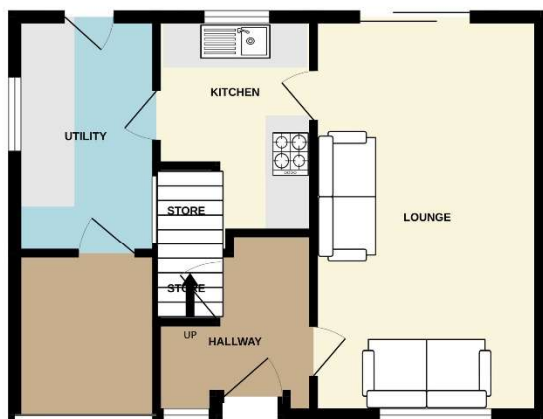




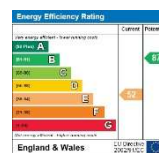


GROUND FLOOR

1ST FLOOR



Whilst every attempt has been made to ensure the accuracy of the floorplan contained here, measurements of doors, windows, rooms and any other items are approximate and no responsibility is taken for any error, omission or mis-statement. This plan is for illustrative purposes only and should be used as such by any prospective purchaser. The services, systems and appliances shown have not been tested and no guarantee as to their operability or efficiency can be given.
Made with Metropix ©2025



Disclaimer: Whilst these details are thought to be correct, their accuracy cannot be guaranteed and do not form part of any contract. It should be noted that we have not tested any fixtures, fittings, equipment, apparatus or services, therefore we cannot verify that they are in working order of fit for purpose. Solicitors should be used to confirm that any moveable items described within these details are in fact part of the sale agreement. While we try to ensure measurements are correct they are not guaranteed and purchasers are advised to take their own measurements before ordering any fixtures and fittings. Please note: if you are buying a leasehold property, please ensure that all details and conditions of the lease are checked with your solicitor prior to you incurring any costs as additional fees could be incurred for items such as leasehold packs.