



Allport Road, Bromborough

£230,000



LESLEY HOOKS  
ESTATE AGENTS





This charming three-bedroom semi-detached home offers a perfect blend of space, comfort, and natural light. As you step inside, you are welcomed by a well-proportioned dining room to the front, ideal for entertaining guests or enjoying family meals. The lounge, positioned at the rear, benefits from an abundance of natural sunlight, creating a warm and inviting atmosphere. Adjacent to the lounge, the kitchen provides a functional and practical space for cooking.

To the first floor, you will find three well-sized bedrooms, each offering a comfortable retreat. The bathroom features both a bath and a separate shower for convenience, complemented by a separate WC.

Externally, the property boasts a driveway to the front, providing off-road parking. To the rear, a delightful garden with a sunny aspect offers the perfect setting for relaxation or outdoor activities.

This well-presented home is an excellent choice for families or those looking for a bright and spacious living environment.



#### **Hallway**

13'7" (4.14m) x 6'6" (1.98m)

#### **Lounge**

13'0" (3.96m) x 9'0" (2.74m)

#### **Kitchen**

10'2" (3.1m) x 7'7" (2.31m)

#### **Bedroom One**

14'2" (4.32m) x 10'10" (3.3m)

#### **Bedroom Two**

11'8" (3.56m) x 8'11" (2.72m)

#### **Bedroom Three**

10'2" (3.1m) x 9'5" (2.87m)

#### **Bathroom**

8'6" (2.59m) x 6'9" (2.06m)

#### **WC**

5'3" (1.6m) x 2'8" (0.81m)





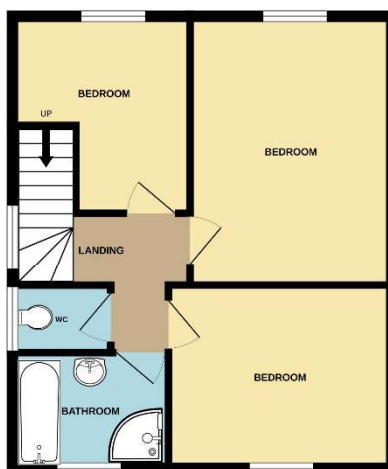
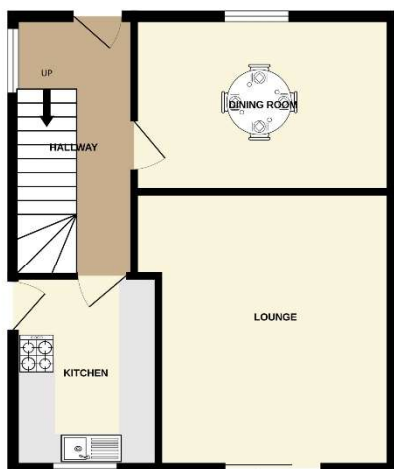






GROUND FLOOR

1ST FLOOR



Whilst every attempt has been made to ensure the accuracy of the floorplan contained here, measurements of doors, windows, rooms and any other items are approximate and no responsibility is taken for any error, omission or mis-statement. This plan is for illustrative purposes only and should be used as such by any prospective purchaser. The services, systems and appliances shown have not been tested and no guarantee as to their operability or efficiency can be given.  
Made with Metropix ©2025.

Disclaimer: Whilst these details are thought to be correct, their accuracy cannot be guaranteed and do not form part of any contract. It should be noted that we have not tested any fixtures, fittings, equipment, apparatus or services, therefore we cannot verify that they are in working order of fit for purpose. Solicitors should be used to confirm that any moveable items described within these details are in fact part of the sale agreement. While we try to ensure measurements are correct they are not guaranteed and purchasers are advised to take their own measurements before ordering any fixtures and fittings. Please note: if you are buying a leasehold property, please ensure that all details and conditions of the lease are checked with your solicitor prior to you incurring any costs as additional fees could be incurred for items such as leasehold packs.