



Barrymore Way, Bromborough

£425,000



LESLEY HOOKS
ESTATE AGENTS





Welcome to this generously sized four-bedroom detached home, offering versatile living space and modern comforts throughout.

As you enter through the main hallway, you're greeted by access to a well-appointed ground-floor bedroom with its own en-suite shower room – perfect for elderly relatives, those with mobility needs, or as a private haven for a teenager.

The main living area boasts a spacious lounge with arched access leading into a bright and airy open-plan living/dining space. The immaculate kitchen is of a great size and includes a separate utility room for added convenience.

One of the standout features of this home is the conservatory, offering stunning views across the beautifully maintained rear garden – the ideal spot for relaxing or entertaining.

Upstairs, you'll find four well-proportioned bedrooms and a family bathroom, making this home perfect for a growing family.

To the front, there's a generous driveway providing ample parking. To the rear, a mature, private garden offers the kind of peaceful retreat we all dream of – a rare find with this level of privacy.

This home truly ticks all the boxes for flexible living, modern convenience, and outdoor space.



Entrance Hall

7'0" (2.13m) x 6'4" (1.93m)

Lounge

19'10" (6.05m) x 10'4" (3.15m)

Dining Room

11'7" (3.53m) x 10'2" (3.1m)

Kitchen

16'11" (5.16m) x 8'9" (2.67m)

Utility

8'6" (2.59m) x 6'6" (1.98m)

Conservatory

18'7" (5.66m) x 13'0" (3.96m)
Narrowing to 11'4" x 9'1"

Bedroom One

13'9" (4.19m) x 11'9" (3.58m)
Narrowing to 10'5"

Bedroom Two

15'0" (4.57m) x 11'8" (3.56m)

Bedroom Three

10'2" (3.1m) x 8'4" (2.54m)

Bedroom Four

8'11" (2.72m) x 8'9" (2.67m)

Shower Room

9'5" (2.87m) x 9'4" (2.84m)

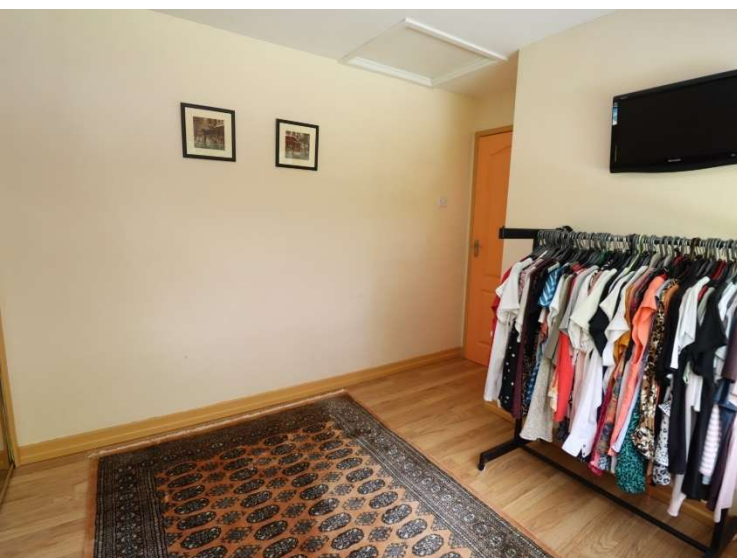
Downstairs Bedroom Five

8'4" (2.54m) x 8'5" (2.57m)

En-Suite

7'9" (2.36m) x 2'3" (0.69m)

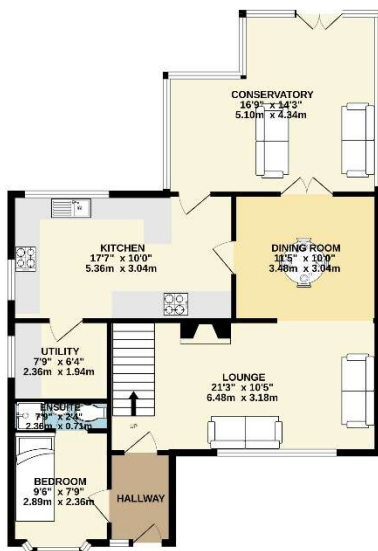






GROUND FLOOR

1ST FLOOR



Contact Us:

0151 334 5875

lesley@lesleyhooks.co.uk

23 Allport Lane,
Bromborough, Wirral,
Merseyside, CH62 7HH

Whilst every attempt has been made to ensure the accuracy of the floorplan contained herein, measurements of rooms, windows, rooms and any other items are approximate and no responsibility is taken for any error, omission or misstatement. This plan is for illustrative purposes only and should not be used as such by any prospective purchaser. The services, systems and appliances shown have not been tested and no guarantee as to their operation or efficiency can be given.
Made with Memphis ©2025

Disclaimer: Whilst these details are thought to be correct, their accuracy cannot be guaranteed and do not form part of any contract. It should be noted that we have not tested any fixtures, fittings, equipment, apparatus or services, therefore we cannot verify that they are in working order of fit for purpose. Solicitors should be used to confirm that any moveable items described within these details are in fact part of the sale agreement. While we try to ensure measurements are correct they are not guaranteed and purchasers are advised to take their own measurements before ordering any fixtures and fittings. Please note: if you are buying a leasehold property, please ensure that all details and conditions of the lease are checked with your solicitor prior to you incurring any costs as additional fees could be incurred for items such as leasehold packs.