



White Lodge Close, Eastham

£285,000



LESLEY HOOKS
ESTATE AGENTS





Tucked away in a peaceful and private setting, this charming three-bedroom semi-detached home is a rare gem — properties in this location seldom come to market, and when they do, they don't stay long. It's easy to see why homeowners here stay for years!

From the moment you arrive, the spacious driveway, offering parking for several vehicles, sets the tone for what's inside. The accommodation begins with a welcoming entrance hallway, leading into a comfortable lounge that flows beautifully into the dining room through double doors. The adjoining conservatory adds extra space to relax or entertain, while the superb, modern kitchen is both stylish and practical — perfect for family living. A handy downstairs WC completes the ground floor.

Upstairs, you'll find three well-proportioned bedrooms and a family bathroom, all thoughtfully laid out for everyday comfort and ease.

To the rear, a private garden and garage provide outdoor space and additional storage, rounding off what is truly a special home.

This is a rare opportunity to secure a home in a quiet, established area where properties rarely become available — don't miss your chance to view!

Hallway

16'0" (4.88m) x 5'10" (1.78m)

Lounge

14'7" (4.45m) x 12'4" (3.76m)

Dining Room

12'2" (3.71m) x 10'3" (3.12m)

Kitchen

11'11" (3.63m) x 7'11" (2.41m)

Conservatory

10'3" (3.12m) x 9'4" (2.84m)

Bedroom One

14'1" (4.29m) Max x 11'0" (3.35m) Max

Bedroom Two

16'11" (5.16m) x 11'0" (3.35m)

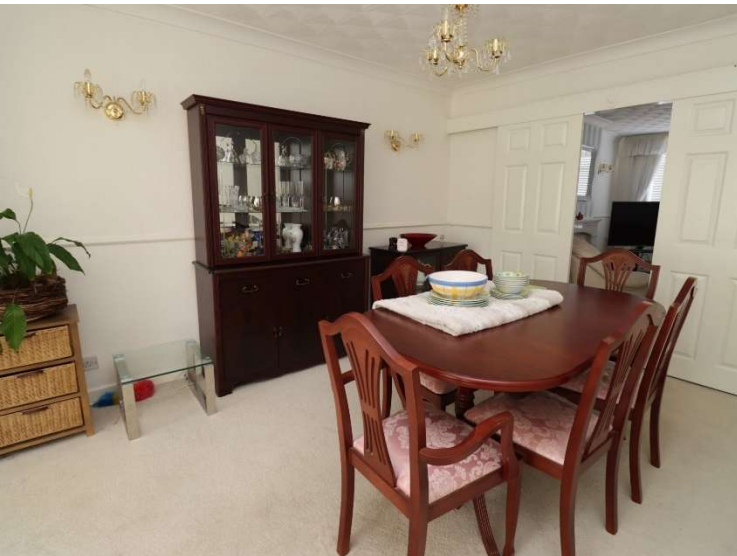
Bedroom Three

8'3" (2.51m) x 7'4" (2.24m)

Bathroom

8'7" (2.62m) x 7'6" (2.29m)







GROUND FLOOR
SEE PAGE 17 OF 17 FOR MORE DETAILS

1ST FLOOR
SEE PAGE 18 OF 17 FOR MORE DETAILS



TOTAL FLOOR AREA: 1,409 sq. ft. (130.9 sqm) approx.
 *This plan is a guide only and does not represent the actual dimensions of the property. It is not intended to be used as a basis for any legal proceedings. The plan is for information only and does not constitute an offer of any kind. The plan is subject to change without notice. The plan is not intended to be used as a basis for any legal proceedings. The plan is for information only and does not constitute an offer of any kind. The plan is subject to change without notice.

Contact Us:

0151 334 5875

lesley@lesleyhooks.co.uk

23 Allport Lane, Bromborough,
Wirral, Merseyside, CH62 7HH

Disclaimer: Whilst these details are thought to be correct, their accuracy cannot be guaranteed and do not form part of any contract. It should be noted that we have not tested any fixtures, fittings, equipment, apparatus or services, therefore we cannot verify that they are in working order of fit for purpose. Solicitors should be used to confirm that any moveable items described within these details are in fact part of the sale agreement. While we try to ensure measurements are correct they are not guaranteed and purchasers are advised to take their own measurements before ordering any fixtures and fittings. Please note: if you are buying a leasehold property, please ensure that all details and conditions of the lease are checked with your solicitor prior to you incurring any costs as additional fees could be incurred for items such as leasehold packs.