



Terminus Road, Bromborough

£129,995



LESLEY HOOKS
ESTATE AGENTS



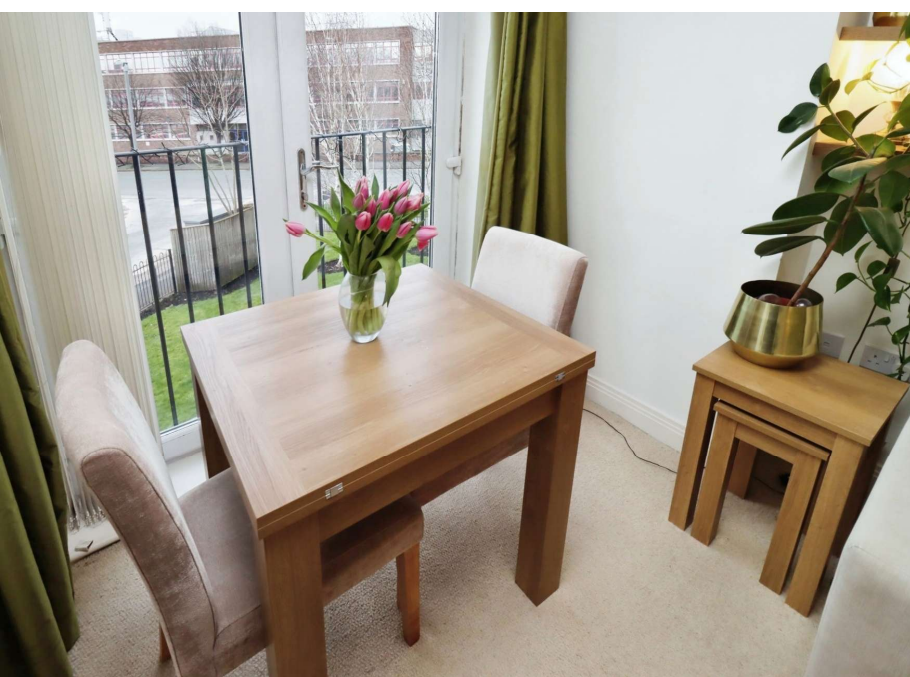


This doesn't feel like an apartment it feels like home! Spacious, light and airy this immaculately presented first floor apartment offers well planned accommodation throughout. You'll be greeted by a welcoming reception hall with personal intercom entry and two handy built in storage cupboards. The living space comprises a generous lounge with a Juliette balcony providing an abundance of natural light and a smart fitted kitchen with integrated hob and oven. There are two good size bedrooms and a most stylish three piece bathroom. The property is set in communal grounds in a popular residential area with bus routes and local shops, a short walk away. Motorway networks to Liverpool and Chester are a couple of minutes drive away. This property is leasehold with a total ground rent and service charge of approx £1,100 per year. There are approx 983 years remaining on the Lease



Lounge

16'0" (4.88m) x 10'5" (3.18m)



Kitchen

12'10" (3.91m) x 6'0" (1.83m)

Bedroom One

15'10" (4.83m) x 8'9" (2.67m)

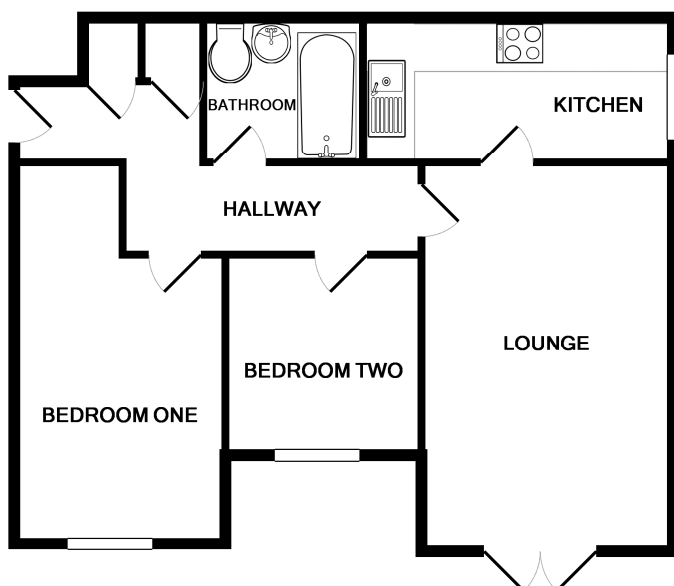
Bedroom Two

8'4" (2.54m) x 8'2" (2.49m)

Bathroom

6'7" (2.01m) x 6'0" (1.83m)





Whilst every attempt has been made to ensure the accuracy of the floor plan contained here, measurements of doors, windows, rooms and any other items are approximate and no responsibility is taken for any error, omission, or mis-statement. This plan is for illustrative purposes only and should be used as such by any prospective purchaser. The services, systems and appliances shown have not been tested and no guarantee as to their operability or efficiency can be given
Made with Metropix ©2014

Contact Us:

0151 334 5875

lesley@lesleyhooks.co.uk

23 Allport Lane, Bromborough,
Wirral, Merseyside, CH62 7HH

Disclaimer: Whilst these details are thought to be correct, their accuracy cannot be guaranteed and do not form part of any contract. It should be noted that we have not tested any fixtures, fittings, equipment, apparatus or services, therefore we cannot verify that they are in working order of fit for purpose. Solicitors should be used to confirm that any moveable items described within these details are in fact part of the sale agreement. While we try to ensure measurements are correct they are not guaranteed and purchasers are advised to take their own measurements before ordering any fixtures and fittings. Please note: if you are buying a leasehold property, please ensure that all details and conditions of the lease are checked with your solicitor prior to you incurring any costs as additional fees could be incurred for items such as leasehold packs.