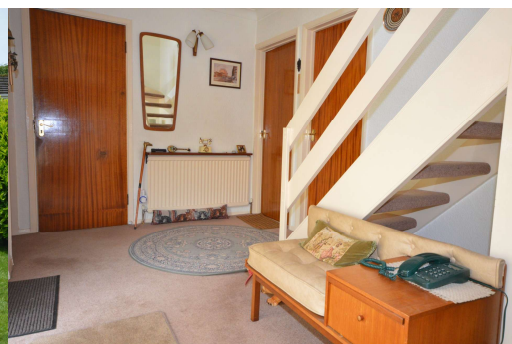




# Blakeley Road, Raby Mere

£345,000



**LESLEY HOOKS**  
ESTATE AGENTS







This impressive and well loved detached home occupies a prime location and offers deceptively spacious accommodation throughout. With views across Bromborough golf course there will be no excuse for that round of golf! Having uPVC double glazing and combi fired central heating the layout comprises entrance hallway, downstairs wc, lounge through dining room and a kitchen/breakfast room. To the first floor there are four good size bedrooms and a family bathroom To the rear of the property there is a most divine garden mainly laid to lawn with paved patio. To the front there is a driveway with off road parking leading to the garage. Situated in the prestigious and sought after Raby Mere, the property is a short walk away from the Mere with its array of wildlife. Bromborough village with all its shops and amenities is a five minute drive away. Rail and bus routes are all within easy reach.

### **Lounge**

11'2" (3.4m) x 18'0" (5.49m)

L-Shaped Lounge/Dining Room with window to the front with views of the golf course.



### **Dining Room**

10'4" (3.15m) x 9'2" (2.79m)

Sliding patio doors to the rear, space for table and chairs.

### **Kitchen**

11'2" (3.4m) x 9'0" (2.74m)

Units at both eye and floor level, electric cooker, washing machine and table and chairs, door to the side, window to the rear.

### **Downstairs WC**

5'6" (1.68m) x 3'4" (1.02m)

### **Bedroom One**

10'6" (3.2m) x 18'0" (5.49m)

Good size bedroom with window to the front and rear and built in wardrobe.

### **Bedroom Two**

11'0" (3.35m) x 10'7" (3.23m)

Built in wardrobe and window to the rear, phone and tv points.

### **Bedroom Three**

10'10" (3.3m) x 9'1" (2.77m)

Window to the front, tv point.

### **Bedroom Four**

8'11" (2.72m) x 9'6" (2.9m)

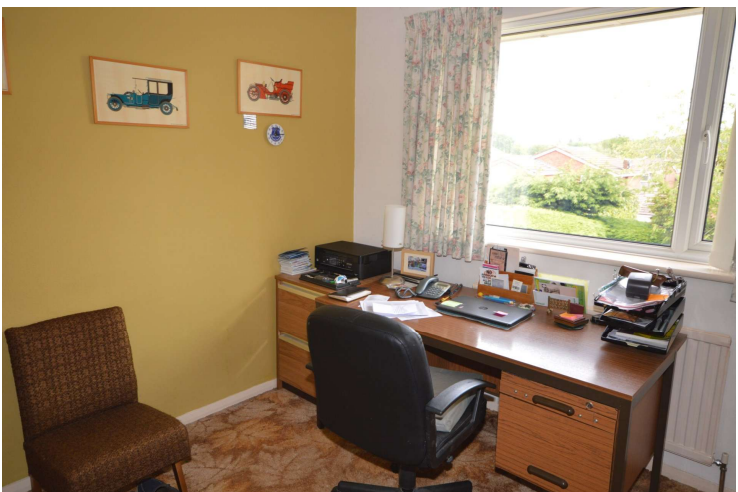
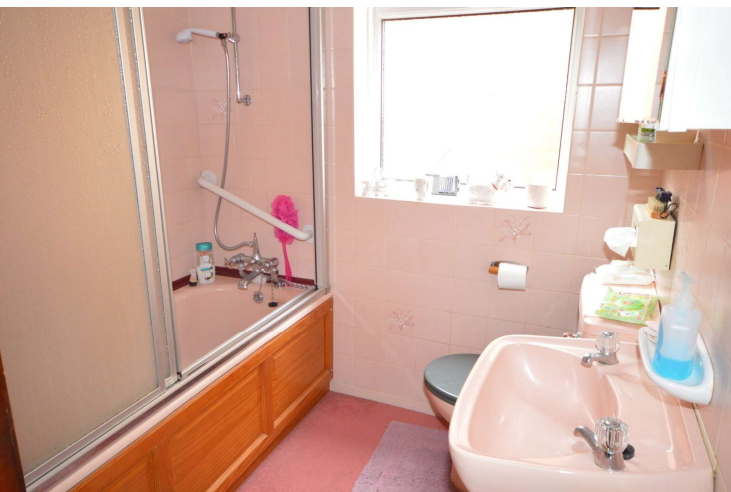
Window to the rear, built in store cupboard, telephone point.



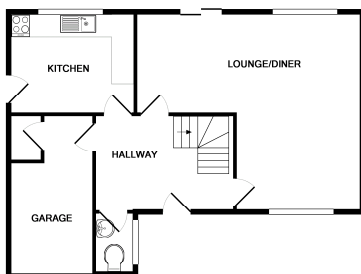
### **Bathroom** 7'8" (2.34m) x 6'6" (1.98m)

Three piece suite comprising wash hand basin, bath with electric shower above and wc.

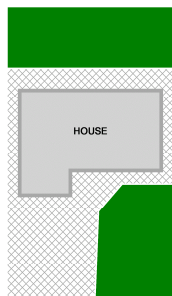




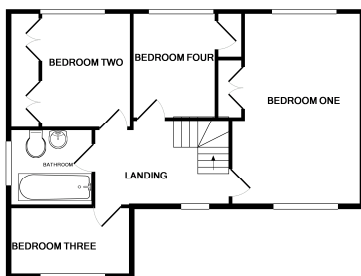




GROUND FLOOR



SITE PLAN



1ST FLOOR

Whilst every attempt has been made to ensure the accuracy of the floor plan contained here, measurements of floors, windows, rooms and any other items are approximate and no responsibility is taken for any error, omission, or mis-statement. This plan is for illustrative purposes only and should be used as such by any prospective purchaser. The services, systems and appliances shown have not been tested and no guarantee as to their operability or efficiency can be given.  
Made with Metropix (22/19)

## Contact Us:

**0151 334 5875**

[lesley@lesleyhooks.co.uk](mailto:lesley@lesleyhooks.co.uk)

23 Allport Lane, Bromborough,  
Wirral, Merseyside, CH62 7HH

Disclaimer: Whilst these details are thought to be correct, their accuracy cannot be guaranteed and do not form part of any contract. It should be noted that we have not tested any fixtures, fittings, equipment, apparatus or services, therefore we cannot verify that they are in working order of fit for purpose. Solicitors should be used to confirm that any moveable items described within these details are in fact part of the sale agreement. While we try to ensure measurements are correct they are not guaranteed and purchasers are advised to take their own measurements before ordering any fixtures and fittings. Please note: if you are buying a leasehold property, please ensure that all details and conditions of the lease are checked with your solicitor prior to you incurring any costs as additional fees could be incurred for items such as leasehold packs.