



Ascot Drive, Ascot Drive

£400,000



LESLEY HOOKS
ESTATE AGENTS





Nestled in a quiet cul-de-sac in the heart of Bebington, this spacious and thoughtfully extended detached home offers the perfect setting for family living. Just a short walk from highly regarded primary, secondary, and grammar schools, this home combines peaceful surroundings with everyday convenience. Beautifully presented and well-maintained, the property benefits from uPVC double glazing and combi-fired central heating throughout. Inside, the porch opens into a welcoming hallway, leading to a handy downstairs WC, a bright and cosy lounge complete with a feature fireplace, and a versatile study/home office—ideal for those working from home. The heart of the home is the stunning open-plan kitchen and dining area, where the dining room features double doors opening out to the rear garden and open access into a modern fitted kitchen, creating a light and sociable space perfect for family meals and entertaining. Upstairs, you'll find four generously sized bedrooms. The master bedroom boasts stylish fitted wardrobes and a sleek four-piece family bathroom, offering a comfortable and relaxing retreat. Outside, the property continues to impress with a spacious driveway providing off-road parking for several cars and access to the garage with electric up and over door. To the rear, a delightful garden with a patio area offers the ideal spot for enjoying the outdoors. With local shops, transport links, and everyday amenities all within easy reach, this lovely home ticks all the boxes for space, style, and location. Council tax band E. Freehold.



Hallway

13'8" (4.17m) x 6'5" (1.96m)

Downstairs WC

6'4" (1.93m) x 4'0" (1.22m)

Lounge

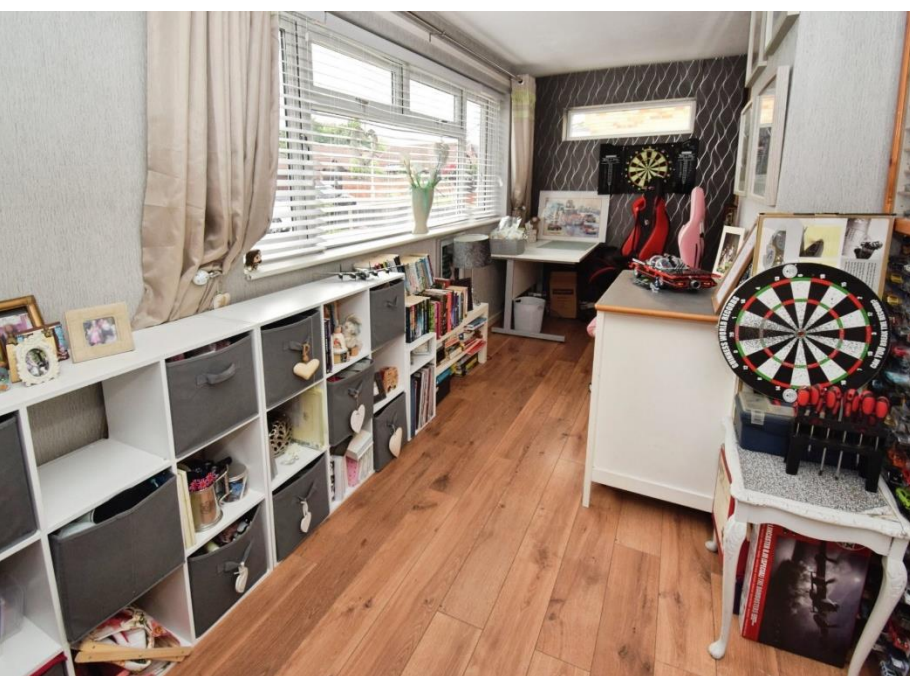
20'0" (6.1m) x 12'1" (3.68m)

Study/Home Office

20'0" (6.1m) x 7'2" (2.18m)

Open Plan Kitchen Dining Room

20'4" (6.2m) Max x 13'6" (4.11m)



Bedroom One

12'2" (3.71m) Into Wardrobe Recess x 10'9" (3.28m)

Bedroom Two

10'5" (3.18m) x 9'0" (2.74m)

Bedroom Three

10'4" (3.15m) Into Wardrobe Recess x 9'8" (2.95m)

Bedroom Four

10'1" (3.07m) x 7'3" (2.21m)

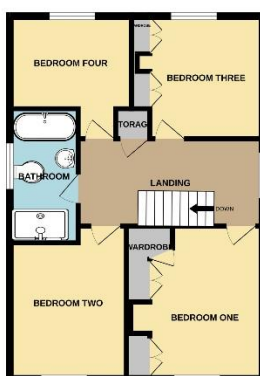
Bathroom

10'7" (3.23m) x 5'9" (1.75m)

Garage

18'10" (5.74m) x 8'7" (2.62m)





TOTAL FLOOR AREA: 1493 sq ft (138.7 sq m.) approx.
 Whilst every attempt has been made to ensure the accuracy of the floorplan contained herein, measurements of doors, windows, rooms and any other items are approximate and no responsibility is taken for any error, omission or misstatement. This plan is for illustrative purposes only and should be used as such by any prospective purchaser. The landlord, agent and advertiser shall have no liability in respect of any error, omission or misstatement. Measurements are to the internal face of the walls.
 Made with Metropack 6.0.0.25

Contact Us:

0151 644 6000

lesley@lesleyhooks.co.uk

6 Church Road, Bebington,

Wirral, Merseyside, CH63 7PH

Disclaimer: Whilst these details are thought to be correct, their accuracy cannot be guaranteed and do not form part of any contract. It should be noted that we have not tested any fixtures, fittings, equipment, apparatus or services, therefore we cannot verify that they are in working order of fit for purpose. Solicitors should be used to confirm that any moveable items described within these details are in fact part of the sale agreement. While we try to ensure measurements are correct they are not guaranteed and purchasers are advised to take their own measurements before ordering any fixtures and fittings. Please note: if you are buying a leasehold property, please ensure that all details and conditions of the lease are checked with your solicitor prior to you incurring any costs as additional fees could be incurred for items such as leasehold packs.