



# Plymyard Avenue, Bromborough

£575,000



**LESLEY HOOKS**  
ESTATE AGENTS





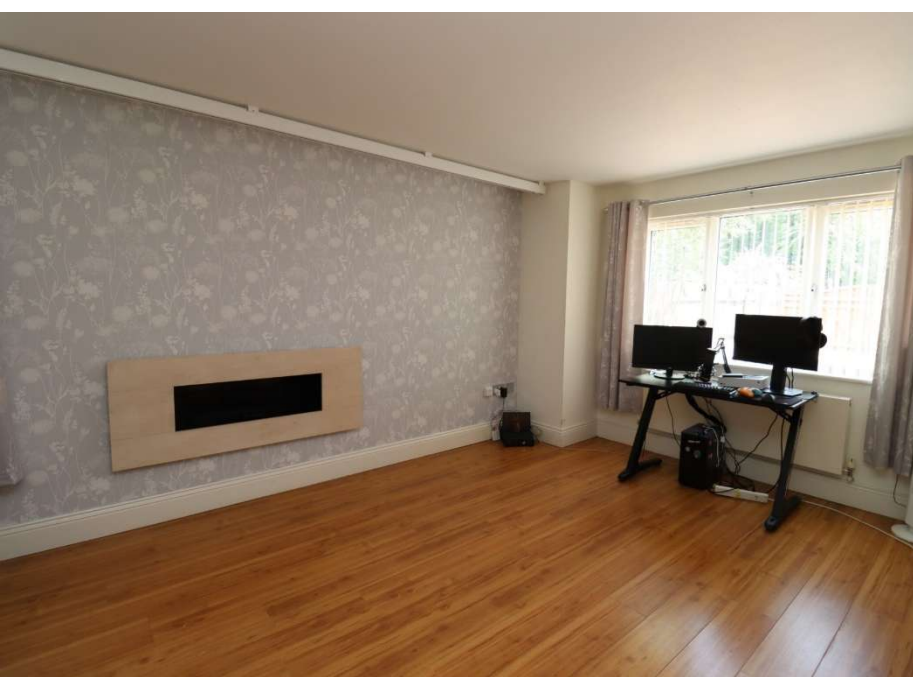


This magnificent six-bedroom house spans three expansive floors and boasts the grandeur and scale of a boutique hotel with a central staircase. The property is thoughtfully designed to offer an abundance of space, luxury, and privacy, making it an ideal sanctuary for a discerning family. Upon entering through the grand double gates, a spacious driveway leads to a double garage, providing ample parking for multiple vehicles. The front entrance opens into an inviting foyer, setting the tone for the opulent interiors that lie within.



To the left of the foyer, a cozy yet spacious lounge offers a perfect retreat for relaxation, with large windows that flood the room with natural light. Adjacent to the lounge a sitting room provides an elegant space for entertaining guests.

The heart of the home is undoubtedly the expansive kitchen, fitted with state-of-the-art appliances and a generous dining/seating area. The kitchen seamlessly flows into a utility room, ensuring practicality and additional storage space. A downstairs WC is conveniently located nearby.



At the rear of the ground floor is the dining room, overlooking the rear garden ideal for family gatherings and summer parties.

Ascending the grand staircase to the first floor, you are greeted by four generously sized bedrooms. The master suite is a true sanctuary, featuring a luxurious en-suite bathroom. The second bedroom also enjoys the privacy of an en-suite, making it perfect for guests or family members.

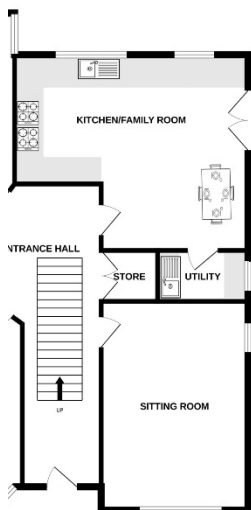
The remaining two bedrooms are a



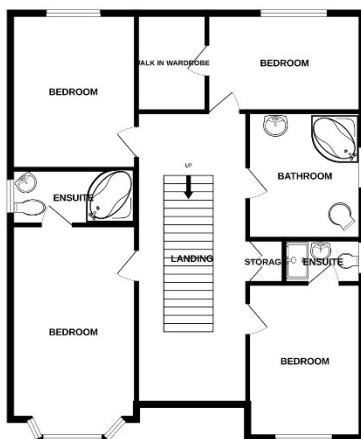




ROUND FLOOR  
q.ft. (103.3 sq.m.) approx.

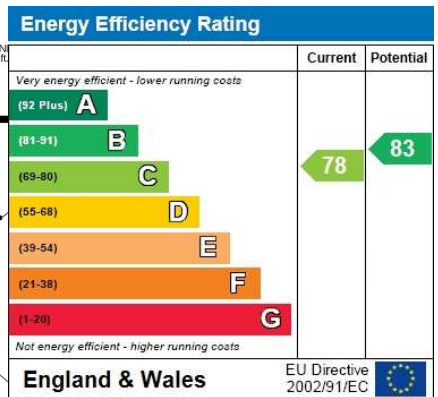


1ST FLOOR  
995 sq.ft. (92.4 sq.m.) approx.

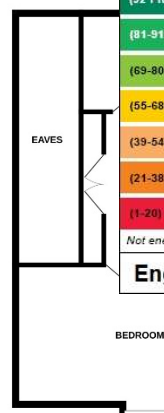


TOTAL FLOOR AREA : 2834 sq.ft. (263.3 sq.m.) approx.

Whilst every attempt has been made to ensure the accuracy of the floorplan contained here, measurements of doors, windows, rooms and any other items are approximate and no responsibility is taken for any error, omission or mis-statement. This plan is for illustrative purposes only and should be used as such by any prospective purchaser. The services, systems and appliances shown have not been tested and no guarantee as to their operability or efficiency can be given.  
Made with Metropix ©2024



2ND FLOOR  
727 sq.ft.



Contact Us:  
**34 5875**  
@lesleyhooks.co.uk  
Port Lane, Bromborough,  
Merseyside, CH62 7HH

Disclaimer: Whilst these details are thought to be correct, their accuracy cannot be guaranteed and do not form part of any contract. It should be noted that we have not tested any fixtures, fittings, equipment, apparatus or services, therefore we cannot verify that they are in working order of fit for purpose. Solicitors should be used to confirm that any moveable items described within these details are in fact part of the sale agreement. While we try to ensure measurements are correct they are not guaranteed and purchasers are advised to take their own measurements before ordering any fixtures and fittings. Please note: if you are buying a leasehold property, please ensure that all details and conditions of the lease are checked with your solicitor prior to you incurring any costs as additional fees could be incurred for items such as leasehold packs.