



# Heathdale Manor, Bebington

£119,995



**LESLEY HOOKS**  
ESTATE AGENTS







This beautiful two bedroom retirement apartment is located on the ground floor, providing easy access with no stairs to climb. It is located in a desirable area of town, close to all the necessary amenities such as grocery stores, restaurants, parks and public transportation. Inside, you will find a modern layout with an abundance of natural light that flows throughout. The two double bedrooms are well-proportioned with stylish fitted slide robes and provide ample space for all your needs. The modern kitchen is fully equipped with oven, hob and integrated freezer. The living area is spacious and inviting, with plenty of room for sofa's and a dining table, perfect for relaxing after a long day. With the benefit of sliding patio doors from the lounge out to the gardens, this is ideal for those who want to be able to sit outside on a warm summers day. Heathdale Manor itself has a house manager to deal with day to day enquiries and also offers a wealth of amenities including a communal lounge, laundry room, games room and organised activities if you so wish. With its close proximity to amenities, this charming two bedroom retirement apartment is the perfect place to call home. Council tax band tbc. Leasehold property subject to a monthly service charge of £248.62 and there are 90 years left on the lease. The property is offered for sale with no onward chain.



#### **Hallway**

20'0" (6.1m) x 3'0" (0.91m)

#### **Lounge Dining Room**

17'0" (5.18m) x 9'10" (3m)

#### **Kitchen**

7'1" (2.16m) x 7'0" (2.13m)

#### **Bedroom One**

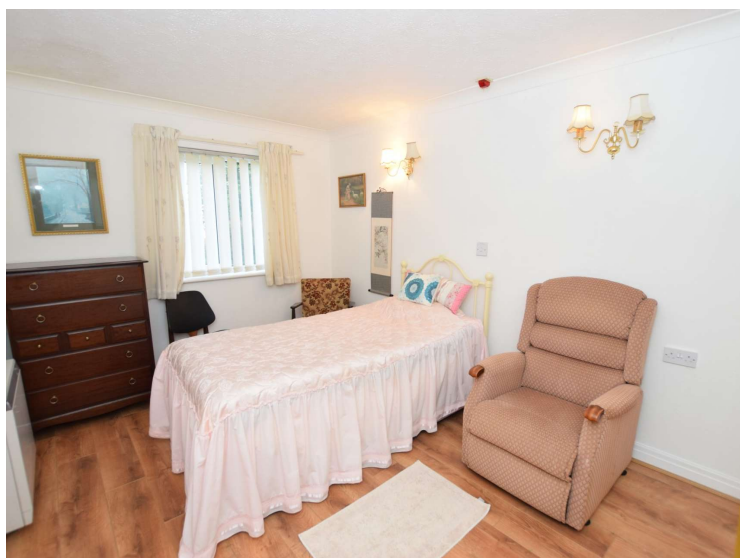
13'10" (4.22m) x 9'0" (2.74m)

#### **Bedroom Two**

13'10" (4.22m) x 9'0" (2.74m)

#### **Bathroom**

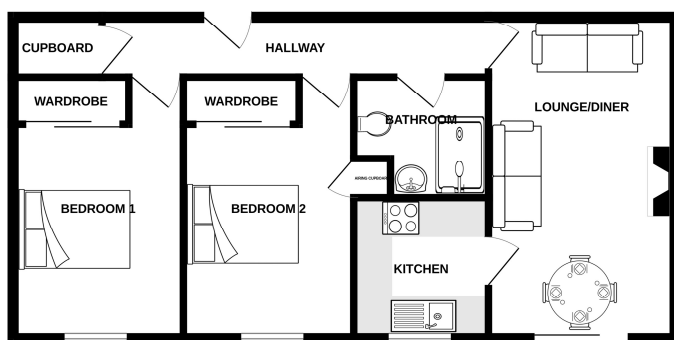
7'0" (2.13m) Max x 6'0" (1.83m)







GROUND FLOOR  
590 sq.ft. (54.8 sq.m.) approx.



TOTAL FLOOR AREA: 590 sq.ft. (54.8 sq.m.) approx.  
Whilst every attempt has been made to ensure the accuracy of the floorplan contained herein, measurements of floors, windows, doors and any other items are approximate and no responsibility is taken for any error, omission or mis-statement. This plan is for illustrative purposes only and should not be used as such by any prospective purchaser. The services, fixtures and appliances shown have not been tested and no guarantee as to their operability or efficiency can be given.  
Made with Measure ©2023

### Contact Us:

**0151 644 6000**

[lesley@lesleyhooks.co.uk](mailto:lesley@lesleyhooks.co.uk)

6 Church Road, Bebington,

Wirral, Merseyside, CH63 7PH

Disclaimer: Whilst these details are thought to be correct, their accuracy cannot be guaranteed and do not form part of any contract. It should be noted that we have not tested any fixtures, fittings, equipment, apparatus or services, therefore we cannot verify that they are in working order of fit for purpose. Solicitors should be used to confirm that any moveable items described within these details are in fact part of the sale agreement. While we try to ensure measurements are correct they are not guaranteed and purchasers are advised to take their own measurements before ordering any fixtures and fittings. Please note: if you are buying a leasehold property, please ensure that all details and conditions of the lease are checked with your solicitor prior to you incurring any costs as additional fees could be incurred for items such as leasehold packs.