



Venables Drive, Spital

£400,000



LESLEY HOOKS
ESTATE AGENTS





360 VIRTUAL TOUR Welcome to this charming detached house nestled on a generously sized plot along one of Spital's most sought-after roads. With its enviable position offering a fantastic open aspect overlooking lush farmer's fields at the rear, this light-filled home is sure to capture your heart. Stepping inside, you'll find a space brimming with potential, perfect for those eager to infuse their personal touch into their living space. The layout is both practical and inviting, featuring a hallway, convenient downstairs shower room, a spacious lounge seamlessly flowing into the dining room, a well-equipped kitchen, and an additional sitting room. Upstairs, the charm continues with three spacious double bedrooms, each adorned with fitted wardrobes for ample storage. The master bedroom also boasts a convenient wash hand basin, ensuring both comfort and functionality. Completing the upper level is a modern bathroom and a separate WC, offering convenience for busy households. Outside, the property impresses further with one of the longest driveways in the area, leading to a double length garage, providing ample parking space. To the rear, a delightful garden awaits, basking in the southern sunlight and offering serene views of the surrounding countryside. With the added bonus of combi fired gas central heating and double glazing, this home promises comfort and efficiency year-round. Plus, with no onward chain, the transition to your new abode couldn't be smoother. Don't miss the opportunity to make this idyllic property your own and create lasting memories in a truly special setting. Council tax band E. Freehold.

Hallway

11'6" (3.51m) Max x 8'6" (2.59m) Max

Downstairs Shower Room

7'6" (2.29m) x 4'6" (1.37m)

Lounge

18'8" (5.69m) x 10'9" (3.28m)

Dining Room

12'1" (3.68m) x 9'0" (2.74m)

Sitting Room/Home Office

8'2" (2.49m) x 6'4" (1.93m)

Kitchen

11'8" (3.56m) x 8'0" (2.44m)

Bedroom One

18'8" (5.69m) Into Wardrobe Recess x 12'2" (3.71m) Max

Bedroom Two

12'4" (3.76m) Into Wardrobe Recess x 9'11" (3.02m)

Bedroom Three

12'4" (3.76m) x 10'11" (3.33m)

Bathroom

6'3" (1.91m) x 5'11" (1.8m)

Separate WC

6'2" (1.88m) x 2'9" (0.84m)

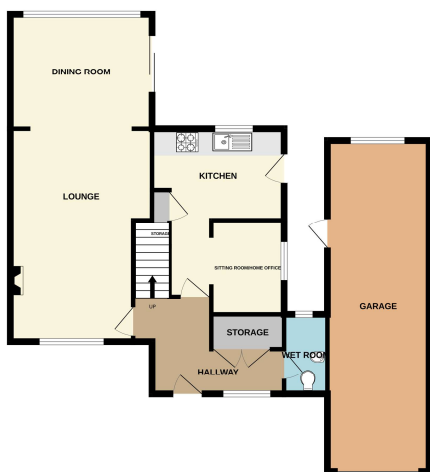
Garage

29'0" (8.84m) x 8'11" (2.72m)

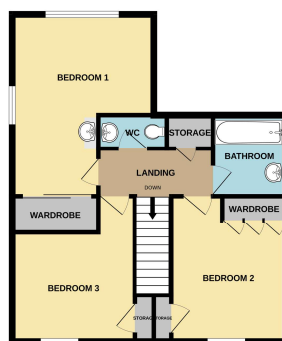




GROUND FLOOR
910 sq.ft. (84.5 sq.m.) approx.



1ST FLOOR
586 sq.ft. (54.5 sq.m.) approx.



TOTAL FLOOR AREA: 1496 sq.ft. (139.0 sq.m.) approx.

Whilst every attempt has been made to ensure the accuracy of the floorplan contained here, measurements of doors, windows, rooms and any other items are approximate and no responsibility is taken for any error, omission or mis-statement. This plan is for illustrative purposes only and should be used as such by any prospective purchaser. The services, systems and appliances shown have not been tested and no guarantee as to their operability or efficiency can be given.
Made with Metaphor 12/2024

Contact Us:

0151 644 6000

lesley@lesleyhooks.co.uk

**6 Church Road, Bebington,
Wirral, Merseyside, CH63 7PH**

Disclaimer: Whilst these details are thought to be correct, their accuracy cannot be guaranteed and do not form part of any contract. It should be noted that we have not tested any fixtures, fittings, equipment, apparatus or services, therefore we cannot verify that they are in working order of fit for purpose. Solicitors should be used to confirm that any moveable items described within these details are in fact part of the sale agreement. While we try to ensure measurements are correct they are not guaranteed and purchasers are advised to take their own measurements before ordering any fixtures and fittings. Please note: if you are buying a leasehold property, please ensure that all details and conditions of the lease are checked with your solicitor prior to you incurring any costs as additional fees could be incurred for items such as leasehold packs.