



Rosefield Avenue, Bebington

£225,000



LESLEY HOOKS
ESTATE AGENTS





Nestled in a popular residential neighbourhood, this immaculate semi-detached house is a breath of fresh air, offering a light and airy ambiance that instantly welcomes you in. Ideal for first-time buyers or families, this home boasts modern conveniences and charming features throughout. Step inside and be greeted by a bright hallway leading to the inviting lounge, complete with a bay window that floods the room with natural light. Adorned with wood block flooring, the lounge seamlessly flows into the cosy sitting room, featuring a charming feature fireplace and a door opening out to the expansive rear garden. Cooking enthusiasts will fall in love with the fitted kitchen, offering ample space and all the essentials to whip up delicious meals for family and friends. Upstairs, you'll find three bedrooms, each offering comfort and tranquility for a good night's sleep. The stylish three-piece bathroom exudes luxury, boasting a shower and shower screen over the bath, perfect for unwinding after a long day. Outside, the property continues to impress with a driveway providing convenient off-road parking at the front. Meanwhile, the rear garden is a true oasis, boasting a delightful patio area and a brick-built outhouse, offering endless possibilities for outdoor enjoyment and entertaining. With uPVC double glazing and combi-fired gas central heating ensuring comfort year-round, this home ticks all the boxes for modern living. Don't miss the opportunity to make this your own and start creating cherished memories in this beautiful abode. Council tax band B. Freehold.



Hallway

12'7" (3.84m) x 5'5" (1.65m)

Lounge

11'6" (3.51m) Into Bay x 10'8" (3.25m)

Sitting Room

12'9" (3.89m) x 10'2" (3.1m)

Kitchen

8'6" (2.59m) x 5'11" (1.8m)



Bedroom One

11'10" (3.61m) Into Bay x 10'3" (3.12m)

Bedroom Two

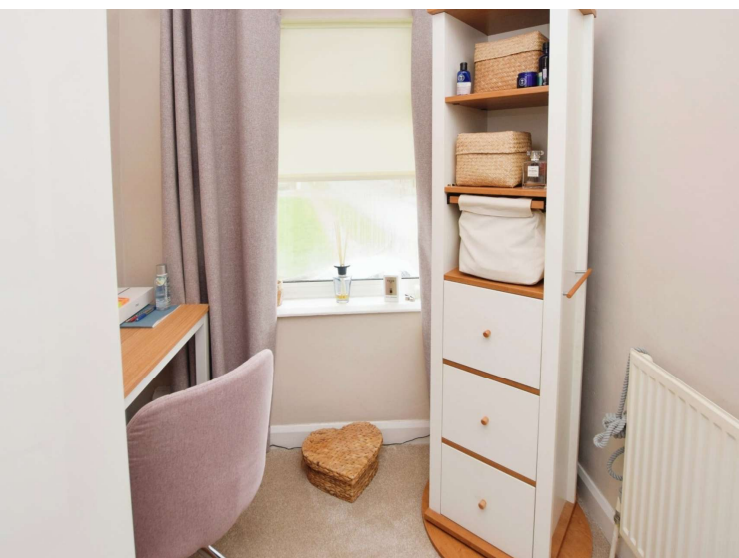
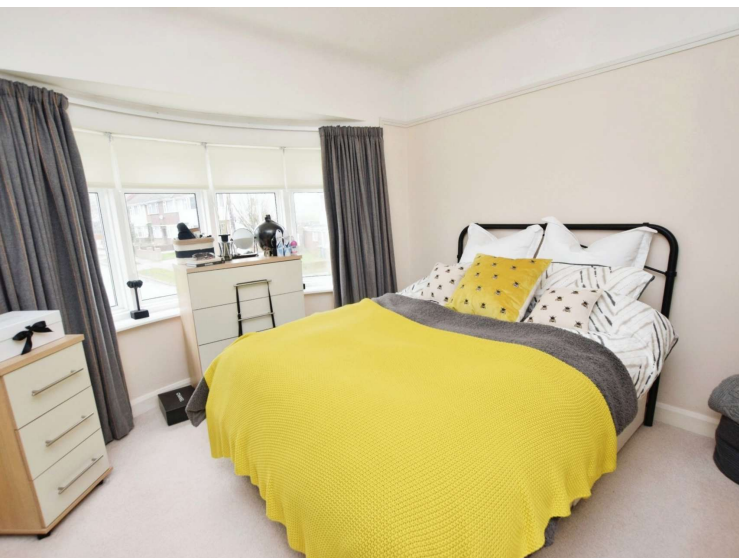
10'11" (3.33m) x 10'7" (3.23m)

Bedroom Three

7'5" (2.26m) x 6'1" (1.85m)

Bathroom

5'11" (1.8m) x 5'7" (1.7m)





GROUND FLOOR
399 sq.ft. (37.1 sq.m.) approx.

1ST FLOOR
351 sq.ft. (32.7 sq.m.) approx.



TOTAL FLOOR AREA: 750 sq.ft. (69.7 sq.m.) approx.
Whilst every attempt has been made to ensure the accuracy of the floorplan contained herein, measurements of doors, windows, rooms and any other items are approximate and no responsibility is taken for any errors, omissions or misstatements. The plan is for illustrative purposes only and should be used as a guide to the prospective purchaser. The services, systems and appliances shown have not been tested and no guarantee can be given as to their condition or operation. Please see drawings 01/20/21.

Contact Us:

0151 644 6000

lesley@lesleyhooks.co.uk

6 Church Road, Bebington,

Wirral, Merseyside, CH63 7PH

Disclaimer: Whilst these details are thought to be correct, their accuracy cannot be guaranteed and do not form part of any contract. It should be noted that we have not tested any fixtures, fittings, equipment, apparatus or services, therefore we cannot verify that they are in working order of fit for purpose. Solicitors should be used to confirm that any moveable items described within these details are in fact part of the sale agreement. While we try to ensure measurements are correct they are not guaranteed and purchasers are advised to take their own measurements before ordering any fixtures and fittings. Please note: if you are buying a leasehold property, please ensure that all details and conditions of the lease are checked with your solicitor prior to you incurring any costs as additional fees could be incurred for items such as leasehold packs.