



Eldon Road, Rock Ferry

£75,000



LESLEY HOOKS
ESTATE AGENTS





Welcome to this deceptively spacious mid-terrace home. The property is brimming with potential and awaits a new owner to bring it back to life! In need of full refurbishment, this property offers a fantastic opportunity to create a dream home or investment. Step inside to find a hallway leading to a spacious lounge through to a dining area, ideal for open-plan living. The kitchen provides a blank canvas to design a modern and functional space. To the first floor there are two well proportioned bedrooms and a bathroom, ready to be transformed to suit your style. Outside, a courtyard waiting to be restored into a private outdoor retreat, perfect for relaxing or entertaining. With no onward chain, this property is ready for a swift and hassle-free purchase. If you're looking for a project with great potential, this could be the perfect home for you! Freehold, Council tax band A. Ultrafast broadband.

Hallway

15'4" (4.67m) x 2'11" (0.89m)

Lounge

13'9" (4.19m) Into Bay x 10'5" (3.18m)

Dining Room

11'11" (3.63m) x 10'5" (3.18m)

Kitchen

10'3" (3.12m) x 7'10" (2.39m)

Bedroom One

11'10" (3.61m) x 13'10" (4.22m)

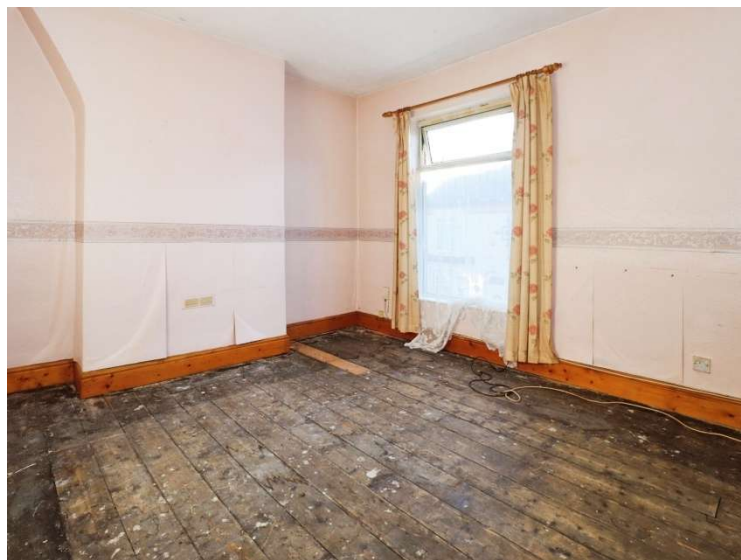
Bedroom Two

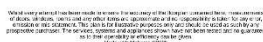
11'11" (3.63m) x 8'9" (2.67m)

Bathroom

6'2" (1.88m) x 7'10" (2.39m)







Wirral, Merseyside, CH63 7PH

Disclaimer: Whilst these details are thought to be correct, their accuracy cannot be guaranteed and do not form part of any contract. It should be noted that we have not tested any fixtures, fittings, equipment, apparatus or services, therefore we cannot verify that they are in working order of fit for purpose. Solicitors should be used to confirm that any moveable items described within these details are in fact part of the sale agreement. While we try to ensure measurements are correct they are not guaranteed and purchasers are advised to take their own measurements before ordering any fixtures and fittings. Please note: if you are buying a leasehold property, please ensure that all details and conditions of the lease are checked with your solicitor prior to you incurring any costs as additional fees could be incurred for items such as leasehold packs.