



Mount Road, Higher Tranmere

£200,000



LESLEY HOOKS
ESTATE AGENTS





This beautifully presented terraced home effortlessly blends period charm with modern comfort, offering spacious accommodation that's ready to move into. Lovingly modernised while retaining many of its stunning original features—including stained glass windows, elegant fireplaces, intricate ceiling architrave, and high ceilings—this home is a true gem. Step through the porch into the welcoming hallway, where exquisite stained glass windows and a stripped timber floor set the tone for the rest of the property. The lounge boasts a striking period-style fireplace, a bright bay window, and warm timber flooring, while the sitting room offers another cosy retreat with its own feature fireplace. The dining room, with direct access to the garden, flows seamlessly into the stylish, modern kitchen. Upstairs, you'll find four generously sized bedrooms, two of which showcase charming feature fireplaces, along with a sleek and sophisticated four-piece bathroom. To the rear, a delightful courtyard garden with decking provides a perfect outdoor space to relax and entertain. With uPVC double glazing and a combi-fired gas central heating system, this home combines character with contemporary convenience—an absolute must-see! Council tax band B. Freehold.



Porch

6'4" (1.93m) x 3'10" (1.17m)

Hallway

12'6" (3.81m) x 6'4" (1.93m)

Lounge

15'3" (4.65m) Into Bay x 13'7" (4.14m)

Sitting Room

14'4" (4.37m) x 10'7" (3.23m)

Dining Room

13'4" (4.06m) x 9'2" (2.79m) Max

Kitchen

10'11" (3.33m) x 9'5" (2.87m)

Bedroom One

15'1" (4.6m) Into Bay x 12'5" (3.78m) Max

Bedroom Two

14'4" (4.37m) x 10'8" (3.25m)

Bedroom Three

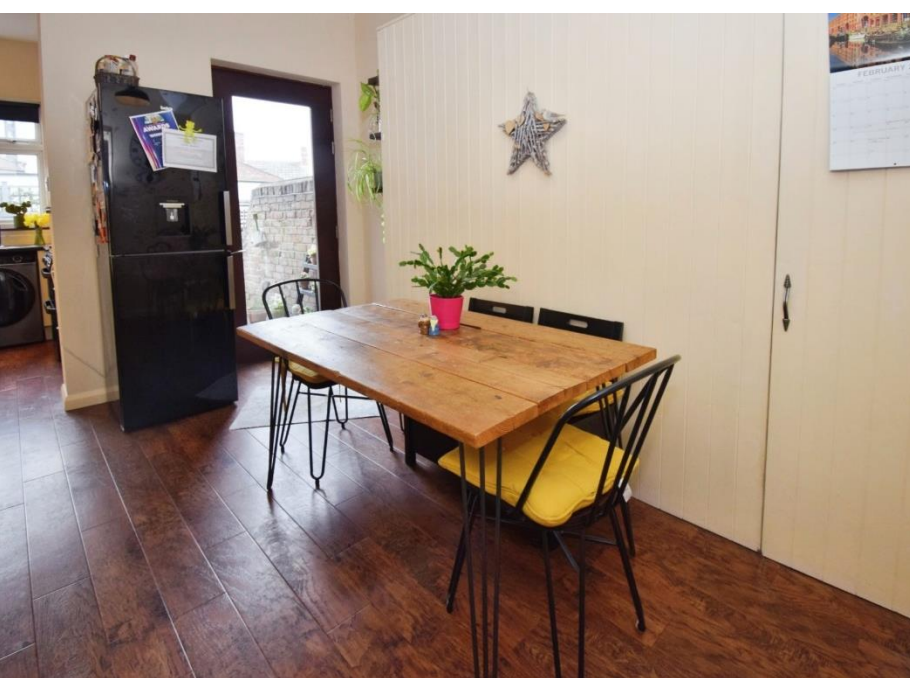
13'5" (4.09m) Max x 9'10" (3m)

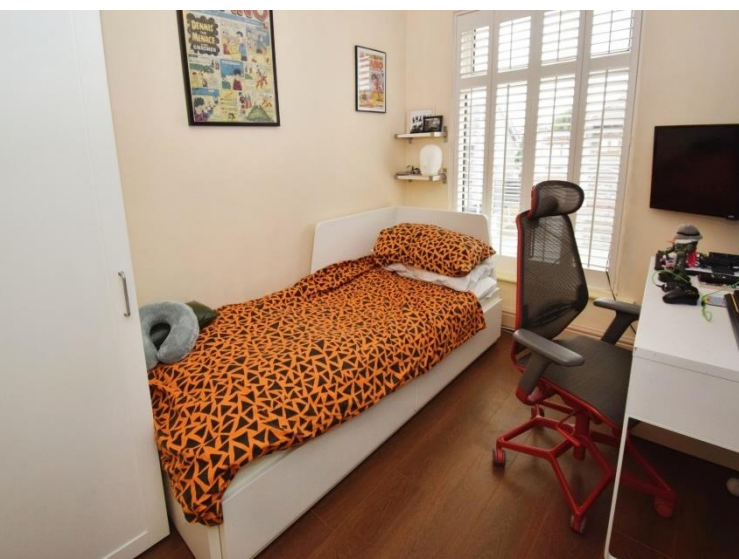
Bedroom Four

9'8" (2.95m) x 7'11" (2.41m)

Bathroom

10'0" (3.05m) x 5'11" (1.8m)







GROUND FLOOR

1ST FLOOR



Contact Us:

0151 644 6000

lesley@lesleyhooks.co.uk

6 Church Road, Bebington,

Wirral, Merseyside, CH63 7PH

Whilst every effort has been made to ensure the accuracy of the floor plan, it is not intended to be a substitute for a professional survey. The data for this floor plan is for information only and should not be relied upon for any purpose. The data for this floor plan is for information only and should not be relied upon for any purpose. The data for this floor plan is for information only and should not be relied upon for any purpose.

Disclaimer: Whilst these details are thought to be correct, their accuracy cannot be guaranteed and do not form part of any contract. It should be noted that we have not tested any fixtures, fittings, equipment, apparatus or services, therefore we cannot verify that they are in working order of fit for purpose. Solicitors should be used to confirm that any moveable items described within these details are in fact part of the sale agreement. While we try to ensure measurements are correct they are not guaranteed and purchasers are advised to take their own measurements before ordering any fixtures and fittings. Please note: if you are buying a leasehold property, please ensure that all details and conditions of the lease are checked with your solicitor prior to you incurring any costs as additional fees could be incurred for items such as leasehold packs.