



Kempson Terrace, Bebington

£175,000



LESLEY HOOKS
ESTATE AGENTS





Tucked away in the heart of Bebington, this charming semi-detached home is light, airy, and full of character. Set in a popular residential area, it's within walking distance of highly regarded primary, secondary, and grammar schools—an ideal choice for families. With uPVC double glazing and gas central heating, the welcoming layout includes a bright hallway, a spacious lounge, and a cosy sitting room featuring a lovely fireplace with a gas stove. The small fitted kitchen is both practical and inviting. Upstairs, you'll find three well-proportioned bedrooms, with the main bedroom boasting a beautiful Victorian-style fireplace, adding a touch of elegance. A stylish modern shower room completes the upper floor. Outside, the generous front garden is laid to lawn, creating great kerb appeal, while the small, rear paved garden enjoys a sunny southerly aspect—perfect for relaxing in the sunshine. Conveniently located close to local shops and excellent transport links, this delightful home is offered for sale with no onward chain, making it a fantastic opportunity for a smooth and hassle-free move. Don't miss out—schedule your viewing today! Council tax band B. Freehold.



Hallway

14'2" (4.32m) x 6'8" (2.03m)

Lounge

10'4" (3.15m) x 11'1" (3.38m)

Sitting Room

13'0" (3.96m) x 11'1" (3.38m)

Kitchen

9'0" (2.74m) x 6'8" (2.03m)

Bedroom One

12'0" (3.66m) x 11'1" (3.38m)

Bedroom Two

11'1" (3.38m) x 9'9" (2.97m)

Bedroom Three

8'5" (2.57m) x 6'7" (2.01m)

Bathroom

5'10" (1.78m) x 6'8" (2.03m)

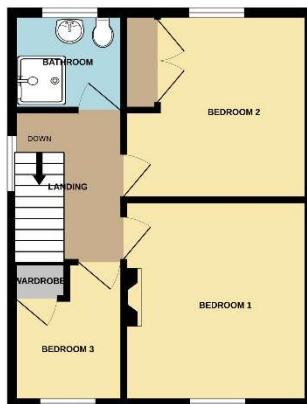
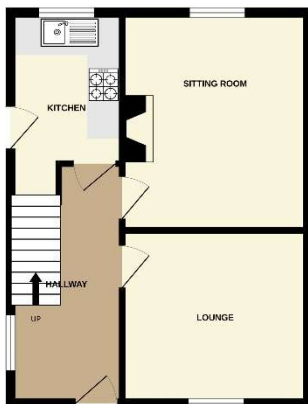






GROUND FLOOR

1ST FLOOR



Whilst every attempt has been made to ensure the accuracy of the floorplan contained here, measurements of rooms, windows, doors and any other items are approximate and no responsibility is taken for any error, omission or misstatement. This plan is for illustrative purposes only and should be used as such by any prospective purchaser. The surfaces, systems and appliances shown have not been tested and no guarantee as to their operability or efficiency can be given.
Made with Metriplan 20205

Contact Us:

0151 644 6000

lesley@lesleyhooks.co.uk

6 Church Road, Bebington,

Wirral, Merseyside, CH63 7PH

Disclaimer: Whilst these details are thought to be correct, their accuracy cannot be guaranteed and do not form part of any contract. It should be noted that we have not tested any fixtures, fittings, equipment, apparatus or services, therefore we cannot verify that they are in working order of fit for purpose. Solicitors should be used to confirm that any moveable items described within these details are in fact part of the sale agreement. While we try to ensure measurements are correct they are not guaranteed and purchasers are advised to take their own measurements before ordering any fixtures and fittings. Please note: if you are buying a leasehold property, please ensure that all details and conditions of the lease are checked with your solicitor prior to you incurring any costs as additional fees could be incurred for items such as leasehold packs.