



Thorburn Road, New Ferry

£230,000



LESLEY HOOKS
ESTATE AGENTS





Welcome to this absolutely stunning semi-detached home, where light and space blend beautifully to create a warm and inviting atmosphere. Deceptively spacious and ready to move into, this charming property boasts high-quality finishes throughout, including oak doors, stylish Karndean flooring on the ground floor, and uPVC double glazing. With a combi-fired gas central heating system, comfort is guaranteed all year round. Step inside and be greeted by a welcoming hallway leading to a bright and airy lounge, complete with a charming box bay window and a cosy log burner—perfect for relaxing evenings. The heart of the home is the superb open-plan kitchen and family room, featuring a second log burner and stunning Bi-fold doors that open out to the delightful rear garden, seamlessly blending indoor and outdoor living. Upstairs, you'll find three well-proportioned bedrooms and a sleek, stylish three-piece shower room. The second floor offers a generous loft room, ideal for a home office, guest room, or additional living space. Outside, the front of the property provides off-road parking, while the rear garden is a private oasis with a paved patio, timber sun deck, and convenient access to the utility room. Ideally located just a short stroll from the shore, this home offers breathtaking views of the Liverpool skyline and easy access to local amenities. Interior viewing is an absolute must to fully appreciate everything this wonderful home has to offer! Council tax band B. Freehold.



Hallway

14'7" (4.45m) x 6'7" (2.01m)

Lounge

13'6" (4.11m) Into Bay x 11'9" (3.58m)

Open Plan Kitchen Family Room

25'3" (7.7m) Max x 18'8" (5.69m) Max

Utility Room

14'11" (4.55m) x 5'7" (1.7m)

Bedroom One

15'0" (4.57m) Into Bay x 11'2" (3.4m)

Bedroom Two

12'1" (3.68m) x 11'6" (3.51m)

Bedroom Three

9'0" (2.74m) x 7'3" (2.21m)

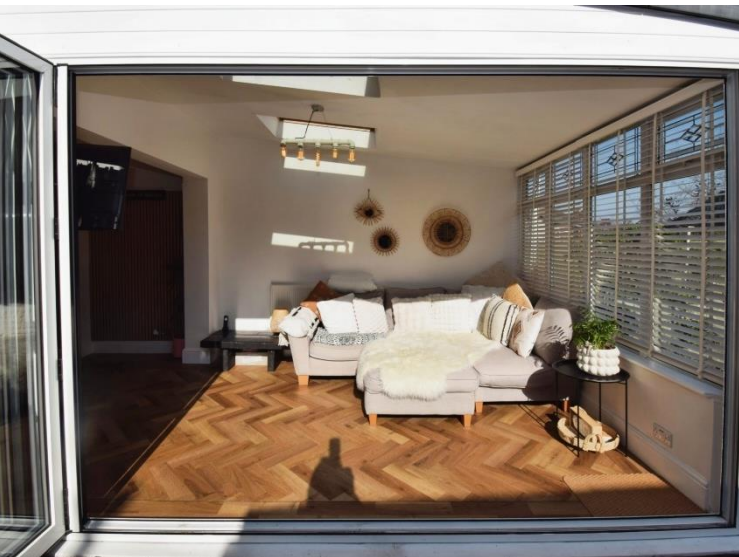
Bathroom

6'5" (1.96m) x 5'8" (1.73m)

Loft Room

18'8" (5.69m) x 11'2" (3.4m)







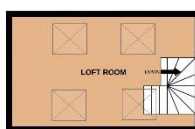
GROUND FLOOR



1ST FLOOR



2ND FLOOR



Whilst every attempt has been made to ensure the accuracy of the floorplan contained herein, measurements of doors, windows, rooms and any other items are approximate and our responsibility is solely for any error, omission or misstatement. This plan is for illustrative purposes only and should be used as such by any prospective purchaser. The services, systems and appliances shown have not been tested and no guarantee as to their operability or efficiency can be given.
Made with floorplan 02025

Contact Us:

0151 644 6000

lesley@lesleyhooks.co.uk

6 Church Road, Bebington,

Wirral, Merseyside, CH63 7PH

Disclaimer: Whilst these details are thought to be correct, their accuracy cannot be guaranteed and do not form part of any contract. It should be noted that we have not tested any fixtures, fittings, equipment, apparatus or services, therefore we cannot verify that they are in working order of fit for purpose. Solicitors should be used to confirm that any moveable items described within these details are in fact part of the sale agreement. While we try to ensure measurements are correct they are not guaranteed and purchasers are advised to take their own measurements before ordering any fixtures and fittings. Please note: if you are buying a leasehold property, please ensure that all details and conditions of the lease are checked with your solicitor prior to you incurring any costs as additional fees could be incurred for items such as leasehold packs.