



# Heathdale Manor, Bebington

£90,000



LESLEY HOOKS  
ESTATE AGENTS







Nestled in the heart of Bebington, this immaculately presented ground-floor retirement apartment offers a perfect blend of comfort and convenience for the over 55s. With a bus stop right outside and the train station just a five-minute walk away, getting around couldn't be easier. Local shops, cafes, and amenities are all within strolling distance, ensuring everything you need is close at hand. The apartment itself is bright, modern, and thoughtfully designed, featuring uPVC double glazing and efficient electric heating. Step inside to find a welcoming hallway with a deep built-in storage cupboard, leading to a spacious lounge/dining room complete with a stylish modern electric fire—ideal for relaxing or entertaining. The smart fitted kitchen boasts an eye-level oven and a four-ring electric hob, making meal preparation a breeze. The generous double bedroom comes with fitted wardrobes, while the contemporary shower room adds a touch of luxury. Residents also enjoy access to a lovely communal lounge, perfect for coffee mornings and social gatherings, as well as a fully equipped laundry room and beautifully maintained gardens. With a dedicated house manager available Monday to Friday and no onward chain, this wonderful home offers peace of mind and a hassle-free move. Don't miss the opportunity to make this charming apartment yours—contact us today to arrange a viewing! Council tax band A. Leasehold subject to a monthly service charge of £217.00 and there are 88 years left on the lease.



#### **Hallway**

11'1" (3.38m) x 3'1" (0.94m)

#### **Lounge Dining Room**

17'10" (5.44m) x 9'9" (2.97m)

#### **Kitchen**

7'8" (2.34m) x 7'4" (2.24m)

#### **Bedroom**

14'4" (4.37m) x 8'10" (2.69m)

#### **Bathroom**

7'6" (2.29m) Max x 6'8" (2.03m)



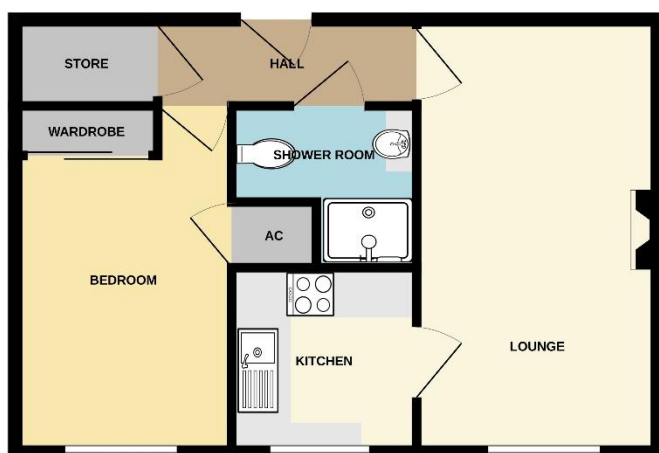








GROUND FLOOR



**Contact Us:**

**0151 644 6000**

[lesley@lesleyhooks.co.uk](mailto:lesley@lesleyhooks.co.uk)

6 Church Road, Bebington,

Wirral, Merseyside, CH63 7PH

Whilst every attempt has been made to ensure the accuracy of the floorplan contained here, measurements of rooms, divisions, levels and any other items are approximate and no responsibility is taken for any error, omission or mis-statement. This plan is for illustration purposes only and should be used in such by any prospective purchaser. The services, materials and appliances shown have not been tested and no guarantee as to their condition or efficiency can be given.  
Made with Homestyler 10/2020

**Disclaimer:** Whilst these details are thought to be correct, their accuracy cannot be guaranteed and do not form part of any contract. It should be noted that we have not tested any fixtures, fittings, equipment, apparatus or services, therefore we cannot verify that they are in working order of fit for purpose. Solicitors should be used to confirm that any moveable items described within these details are in fact part of the sale agreement. While we try to ensure measurements are correct they are not guaranteed and purchasers are advised to take their own measurements before ordering any fixtures and fittings. Please note: if you are buying a leasehold property, please ensure that all details and conditions of the lease are checked with your solicitor prior to you incurring any costs as additional fees could be incurred for items such as leasehold packs.