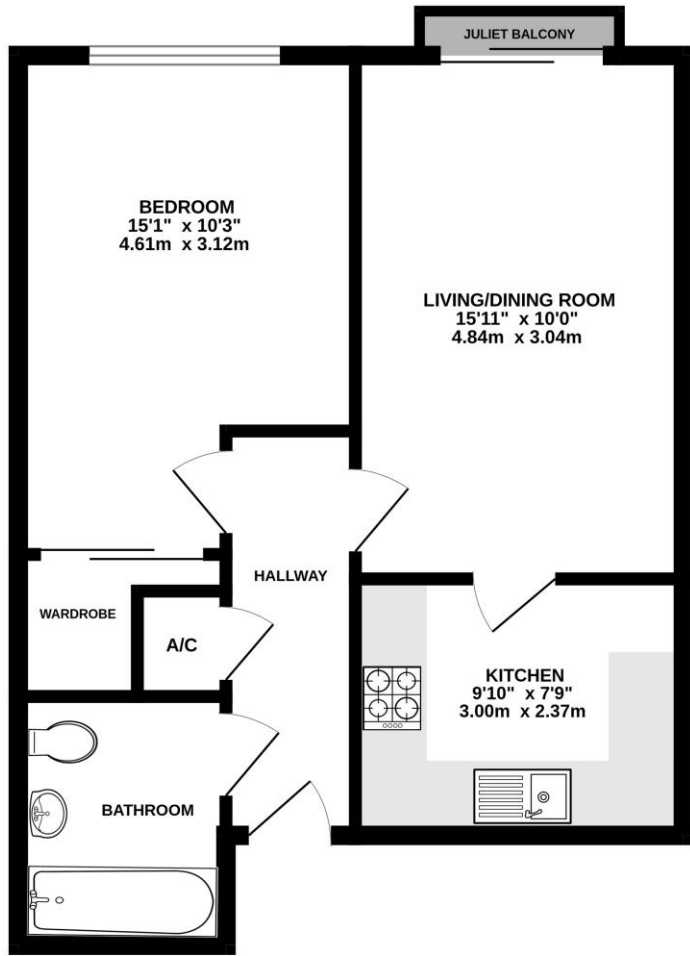




GROUND FLOOR  
499 sq.ft. (46.4 sq.m.) approx.



TOTAL FLOOR AREA : 499 sq.ft. (46.4 sq.m.) approx.

Whilst every attempt has been made to ensure the accuracy of the floorplan contained here, measurements of doors, windows, rooms and any other items are approximate and no responsibility is taken for any error, omission or mis-statement. This plan is for illustrative purposes only and should be used as such by any prospective purchaser. The services, systems and appliances shown have not been tested and no guarantee as to their operability or efficiency can be given.  
Made with Metropix 62025



call us now on 0118 946 1140

masonsestateagents.com

MASONS  
ESTATE AGENTS



18 Quadrant Court, Reading, Berkshire, RG1 2GW  
Price £190,000 Leasehold

10 Bridge Street, Caversham, Reading RG4 8AA t 0118 946 1140 e sales@masonsestateagents.com



18 Quadrant Court, Reading, Berkshire, RG1 2GW  
Price £190,000 Leasehold

Masons are proud to offer to the market this well presented one bedroom ground floor apartment offered for sale with NO ONWARD CHAIN within walking distance of Reading Town Centre, mainline station and The Oracle Shopping Centre. Situated within a popular gated development with on site facilities including a Gym and well maintained communal gardens, the spacious accommodation comprises of a 9ft kitchen, a 15ft living/dining room with Juliet balcony, a 15ft bedroom with built in wardrobe and a family bathroom. Further benefits include secure undercroft parking, UPVC double glazing and the property is offered for sale with NO ONWARD CHAIN. VIEWING RECOMMENDED.

- No onward chain
- Residents on site gym
- Within walking distance of Reading Town Centre and mainline station
- 15ft living/dining room with Juliet balcony
- 15ft bedroom
- Secure, gated undercroft parking
- 9ft Kitchen
- UPVC double glazing
- Well maintained communal gardens

call us now on 0118 946 1140

masonsestateagents.com



Front door opens into the hallway which boasts an airing cupboard and doors to...

Bathroom:

Fitted with a bath with overhead shower, low level WC and hand wash basin.

Bedroom:

15'1" x 10'3"  
Double glazed with a front aspect and built in wardrobe.

Living/dining room:

15'11" x 10'  
Double glazed with a front aspect, Juliet balcony and opening onto the kitchen.

Kitchen:

9'10" x 7'9"

Fitted with a range of eye and base level units with roll edge tops and tiled surround, sink with drainer, oven and hob with extractor above, space and plumbing for further appliances.

Outside:

The property boasts well maintained communal gardens, secure gated undercroft parking and access to a residents gym.

10 Bridge Street, Caversham, Reading RG4 8AA t 0118 946 1140 e sales@masonsestateagents.com