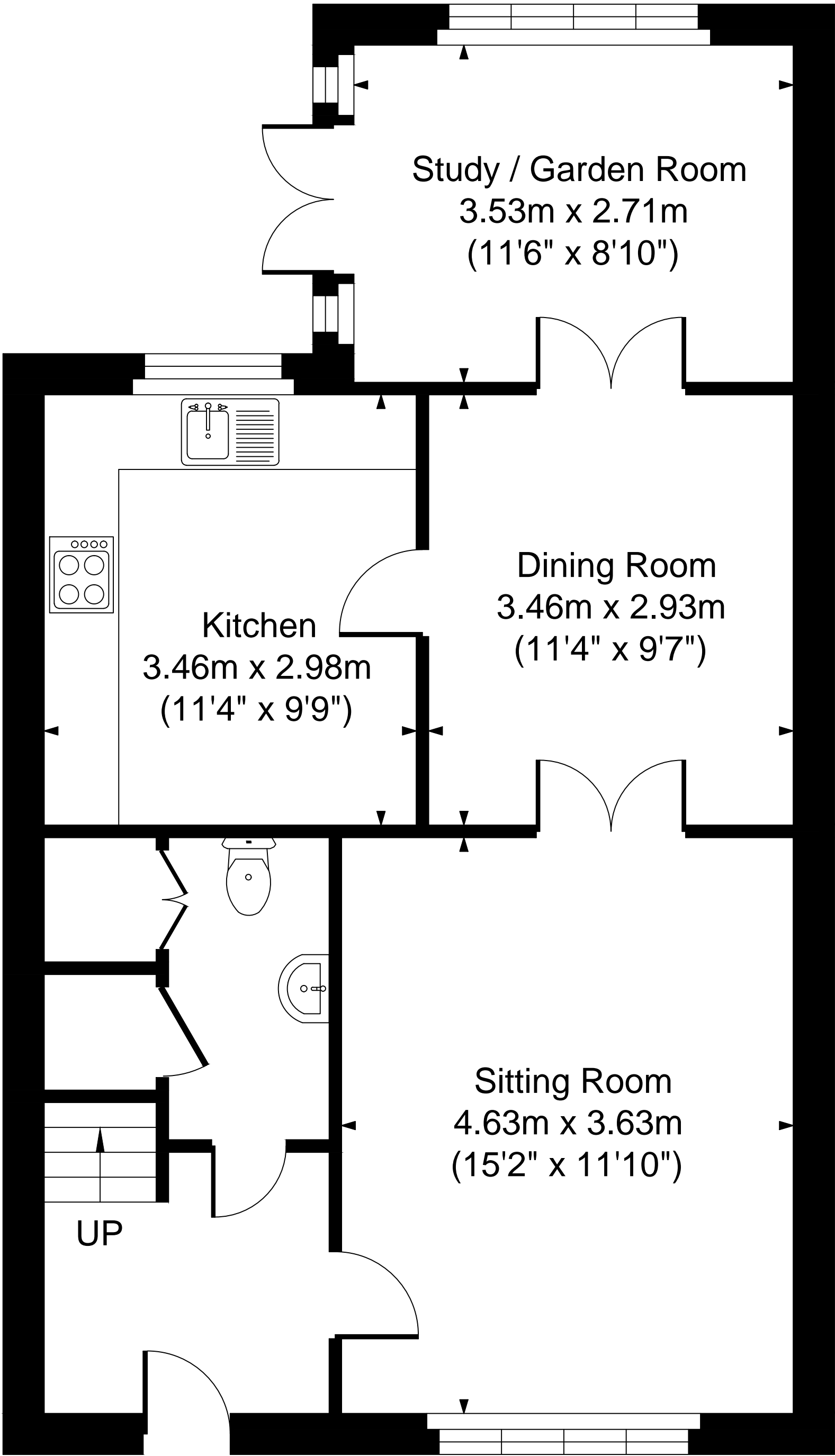
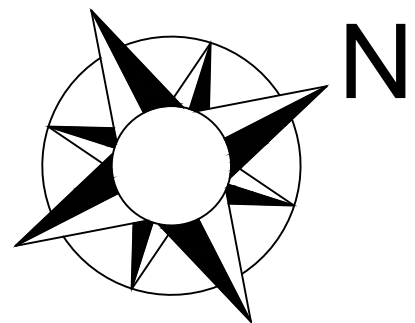
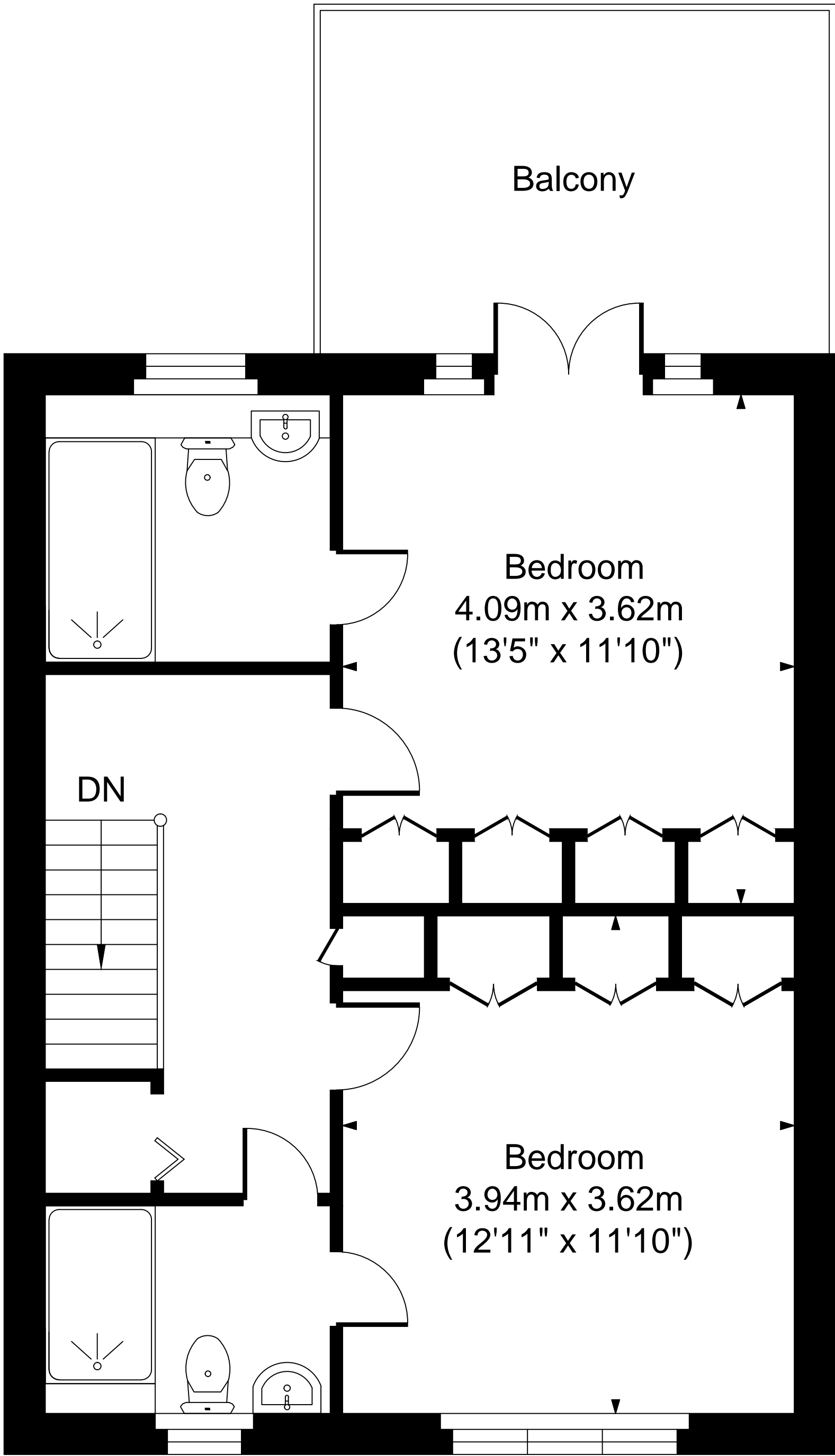


28 Penhurst Gardens, Chipping Norton, OX7 5ED

Total Approx. Gross Area:- 108.52 sq.m. 1168 sq.ft.



Ground Floor



First Floor

FOR ILLUSTRATIVE PURPOSES ONLY-NOT TO SCALE
The position & size of doors, windows, appliances and other features are approximate only.
□□□ Denotes restricted head height
www.dmlphotography.co.uk