



OLD BARN

JUNCTION ROAD, CHURCHILL, OX7 6NW



MAXWELL DOUGLAS

CHARTERED SURVEYORS | ESTATE AGENTS

An attractive semi detached period property situated in one of the North Cotswold's most popular villages



- Three double bedrooms
- Two receptions
- Farmhouse style kitchen
- Period features
- Private Garden
- Off street parking
- Garage
- Popular village

Location

Chipping Norton	3 miles
Stow-On-The-Wold	6.8 miles
Oxford	23 miles
Cheltenham	24 miles
Daylesford Organic	3 miles
Soho Farmhouse	12.3 miles
Kingham Station	2 miles
London Paddington	c. 80 minutes

(all distances and times are approximate)

Situation

Churchill is a very pretty and extremely sought after Cotswold village within the 'Golden Triangle' of Chipping Norton, Stow on the Wold and Burford.

Village amenities include a popular pub (The Chequers), active village hall, heritage centre, and a historic church. The village sits within the catchment area for Kingham Primary School (Ofsted Outstanding).

A full selection of services and shopping are available in nearby Chipping Norton (3 miles) with the economic and cultural centres of Oxford, Banbury and Cheltenham are nearby. Trains to London Paddington (80 mins) and Oxford are available from Kingham Station (2 miles). Daylesford and Soho Farmhouse are both within easy reach.

Old Barn

An attractive semi detached period property situated in one of the North Cotswold's most popular villages.

Old Barn is one of the oldest properties in the village and dates back to circa 1500s.

The property offers well presented accommodation which includes: an entrance hall and downstairs loo, a farmhouse style kitchen with an AGA and integrated appliances, a dining room, and a sitting room both with exposed beams and log burners.

Upstairs there is a principal bedroom with a vaulted ceiling and ample wardrobes, two further double bedrooms with period features, and a family bathroom.

Outside the property enjoys a private landscaped rear garden with a terrace suitable for outside dining, mature borders, off street parking for four cars and a useful garage and garden store.

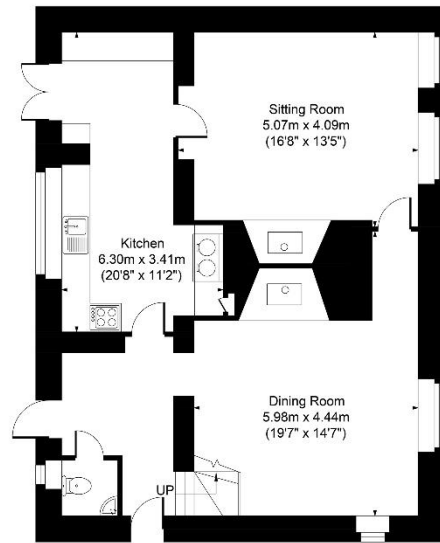
General Information

Council Tax Band: Band E

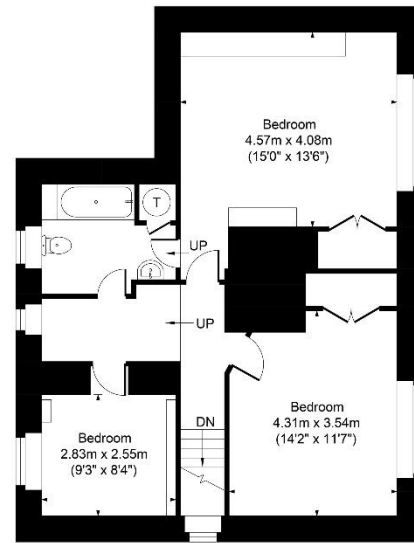
Local Authority: West Oxfordshire District Council



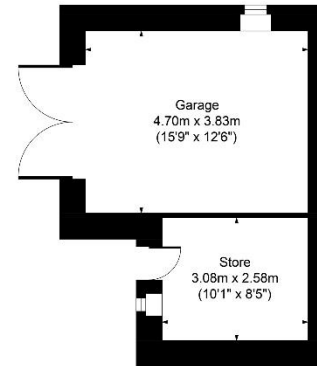
Old Barn, Junction Road, Churchill, OX7 6NW
 Main House Approx. Gross Internal Area:- 143.9 sq.m. 1549 sq.ft.
 Garage & Store Approx. Gross Area:- 21.3 sq.m. 229 sq.ft.
 Total Approx. Gross Area:- 165.2 sq.m. 1778 sq.ft.



Ground Floor



First Floor



Garage / Store

FOR ILLUSTRATIVE PURPOSES ONLY-NOT TO SCALE
 The position & size of doors, windows, appliances and other features are approximate only.
 □□□ Denotes restricted head height
 www.dmlphotography.co.uk

For further information or to arrange a viewing, please contact us
 on **01608 644 000** or email sales@maxwelldouglasproperty.co.uk
www.maxwelldouglasproperty.co.uk



DISCLAIMER: MAXWELL DOUGLAS LIMITED: Maxwell Douglas on its behalf and for the Vendors or Lessors of this property, whose Agents they are, give notice that: These particulars are set out as a general outline only for guidance to intending Purchasers or Lessees, and do not constitute any part of an offer or contract. Details given without any responsibility and any intending Purchasers, Lessees or Third Parties should not rely on them as statements or representations of fact but must satisfy themselves by inspection or otherwise as to the correctness of each of them. No person in the employment of Maxwell Douglas has any authority to make any representation or warranty in relation to this property.

