

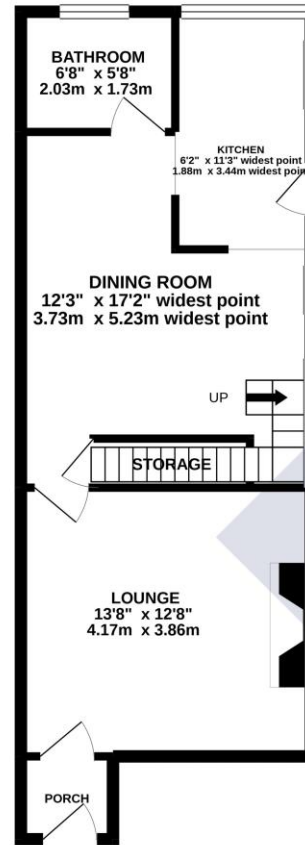


- 3 BEDROOM END TERRACE HOME
- BEAUTIFULLY PRESENTED & SUBSTANTIAL EXTENDED ACCOMMODATION
- SOME LOVELY FEATURES WITH SUPER HIGH CEILINGS
- ATTRACTIVE LIVING ROOM TO FRONT WITH ENCLOSED PORCH
- OPEN PLAN SITTING ROOM/DINING ROOM OPEN TO KITCHEN

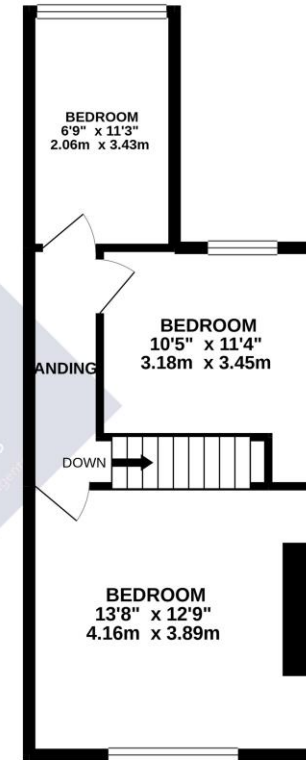
- GAS FIRED HEATING & UPVC DOUBLE GLAZING
- SHARED DRIVEWAY ACCESS WITH PARKING FOR 3 CARS
- DETACHED SINGLE GARAGE
- PLEASANT LANDSCAPED REAR GARDEN REAR WITH WESTERLY ASPECT
- CONVENIENTLY PLACED FOR POYNTON VILLAGE



GROUND FLOOR
494 sq.ft. (45.9 sq.m.) approx.



1ST FLOOR
397 sq.ft. (36.9 sq.m.) approx.



TOTAL FLOOR AREA: 891 sq.ft. (82.8 sq.m.) approx.

Whilst every attempt has been made to ensure the accuracy of the floorplan contained here, measurements of doors, windows, rooms and any other items are approximate and no responsibility is taken for any error, omission or mis-statement. This plan is for illustrative purposes only and should be used as such by any prospective purchaser. The services, systems and appliances shown have not been tested and no guarantee as to their operability or efficiency can be given.
Made with Metreplus ©2020

Please note: these particulars do not form part of a contract and are not to be relied upon in place of seeking any legal advice. Due to the space limitation of this document it is advised you contact us for clarification on any matters which might alter your decision to buy this home. No appliances, including electrics and heating have been or will be tested by Moore Homes Estate Agents and Letting Agents. Measurements are approximate and not to be relied upon and photographs are taken using a wide angle lens therefore rooms may appear larger than they are, however our intention is to show you as much of each room as possible for the photograph.