



- QUITE UNIQUE!
- AN IMMACULATLY PRESENTED DETACHED HOME
- THE PROPERTY OFFERS A STUNNING ARRAY OF FEATURES
- LOVELY SEMI RURAL LOCATION
- SOUTH WESTERLY ASPECT TO THE FRONT ONTO FARM FIELDS

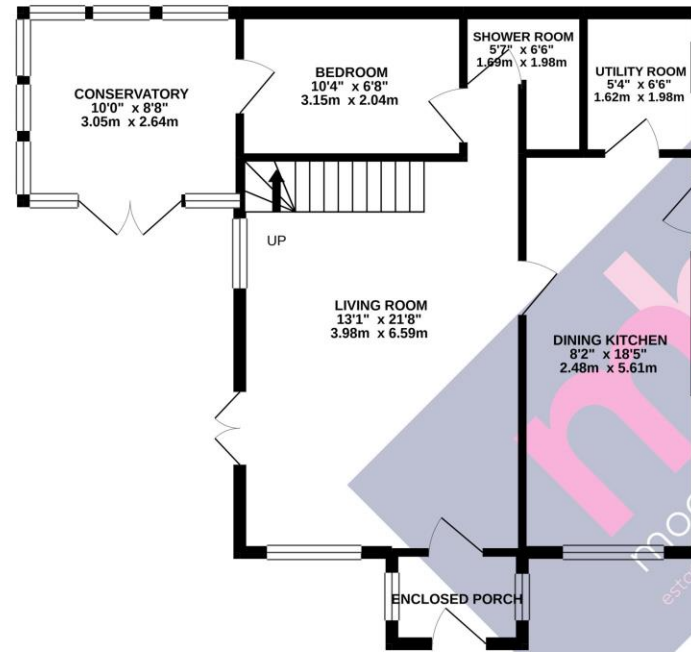
- 2 BEDS - 2 BATHS WITH LUXURY BATHROOM & SHOWER ROOM
- PLEASANT 18' LIVING ROOM WITH OAK FLOORING TO MUCH OF GROUND FLOOR
- LUXURY DINING KITCHEN & UTILITY ROOM
- CONSERVATORY TO THE SIDE AND REAR
- LANDSCAPED GARDEN & DRIVEWAY PROVIDES OFF ROAD PARKING



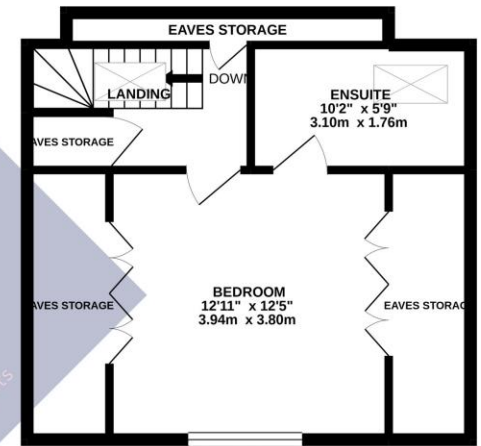




GROUND FLOOR  
641 sq.ft. (59.5 sq.m.) approx.



1ST FLOOR  
396 sq.ft. (36.8 sq.m.) approx.



TOTAL FLOOR AREA : 1037 sq.ft. (96.3 sq.m.) approx.

Whilst every attempt has been made to ensure the accuracy of the floorplan contained here, measurements of doors, windows, rooms and any other items are approximate and no responsibility is taken for any error, omission or mis-statement. This plan is for illustrative purposes only and should be used as such by any prospective purchaser. The services, systems and appliances shown have not been tested and no guarantee as to their operability or efficiency can be given.  
Made with Metropix ©2021

Please note: these particulars do not form part of a contract and are not to be relied upon in place of seeking any legal advice. Due to the space limitation of this document it is advised you contact us for clarification on any matters which might alter your decision to buy this home. No appliances, including electrics and heating have been or will be tested by Moore Homes Estate Agents and Letting Agents. Measurements are approximate and not to be relied upon and photographs are taken using a wide angle lens therefore rooms may appear larger than they are, however our intention is to show you as much of each room as possible for the photograph.