



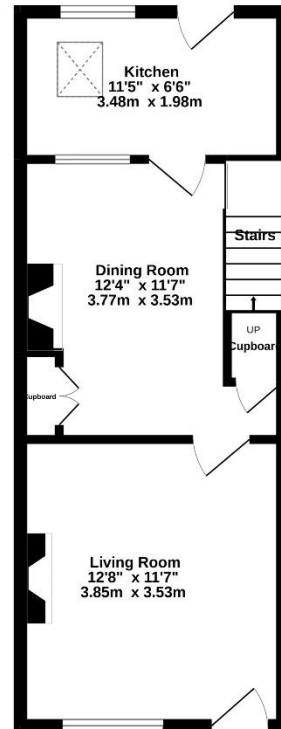
- CHARMING 3 BED 2 BATH MID TERRACE COTTAGE
- GREAT LOCATION A SHORT WALK FOR BRAMHALL VILLAGE
- EXTENDED ACCOMMODATION SET ACROSS 3

- 2 RECEPTION ROOMS
- FLEXIBLE CONVERTED LOFT SPACE USED BY OUR CLIENTS AS BEDROOM 3
- GOOD SIZE MATURE REAR GARDEN WITH SOUTHERLY ASPECT

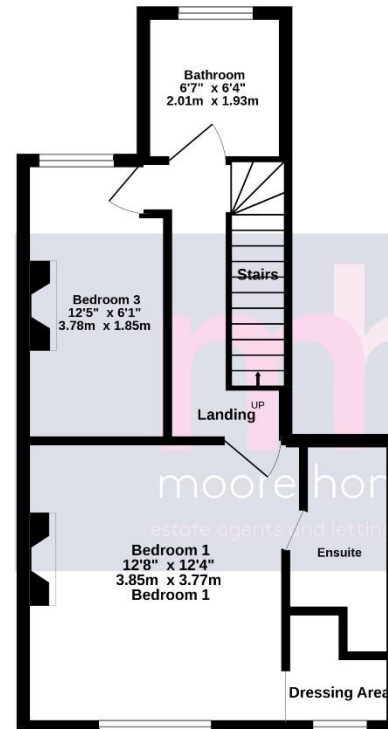




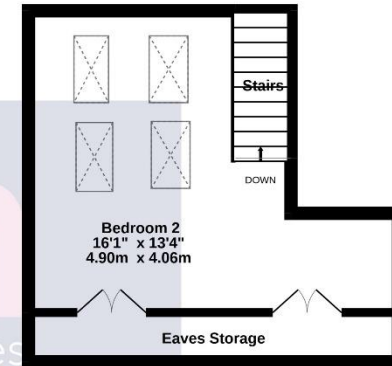
Ground Floor
355 sq.ft. (33.0 sq.m.) approx.



1st Floor
381 sq.ft. (35.4 sq.m.) approx.



2nd Floor
211 sq.ft. (19.6 sq.m.) approx.



TOTAL FLOOR AREA : 946 sq.ft. (87.9 sq.m.) approx.

Whilst every attempt has been made to ensure the accuracy of the floorplan contained here, measurements of doors, windows, rooms and any other items are approximate and no responsibility is taken for any error, omission or mis-statement. This plan is for illustrative purposes only and should be used as such by any prospective purchaser. The services, systems and appliances shown have not been tested and no guarantee as to their operability or efficiency can be given.
Made with Metropix ©2022

Please note: these particulars do not form part of a contract and are not to be relied upon in place of seeking any legal advice. Due to the space limitation of this document it is advised you contact us for clarification on any matters which might alter your decision to buy this home. No appliances, including electrics and heating have been or will be tested by Moore Homes Estate Agents and Letting Agents. Measurements are approximate and not to be relied upon and photographs are taken using a wide angle lens therefore rooms may appear larger than they are, however our intention is to show you as much of each room as possible for the photograph.