



## Asking Price £142,500

Novahomes are pleased to present this one bedroom end terrace house situated in the popular location of Honiton Walk, Whitleigh. The property is well presented and maintained and is offered to the market with no onward chain. Accommodation comprises, entrance porch, lounge, fitted kitchen, bathroom and double bedroom. Other benefits include gas central heating, double glazing, a small low maintenance rear garden and allocated parking. The property would make an ideal first home, or buy to let investment.

# novahomes

Established 2008

 01752 206040

 [sales@novahomes.co.uk](mailto:sales@novahomes.co.uk)

 [www.novahomes.co.uk](http://www.novahomes.co.uk)

## Honiton Walk, Whitleigh, PL5 4HJ

### Accommodation Comprises

Entrance Porch 2.84m (9'4") x 1.12m (3'8")

Lounge 3.86m (12'8") x 2.79m (9'2")

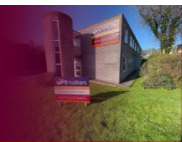
Kitchen 2.95m (9'8") x 2.13m (7'0")

Bedroom One 3.86m (12'8") x 2.95m (9'8")

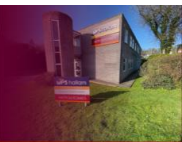
Bathroom 1.98m (6'6") x 1.65m (5'5")

### Viewing Arrangements

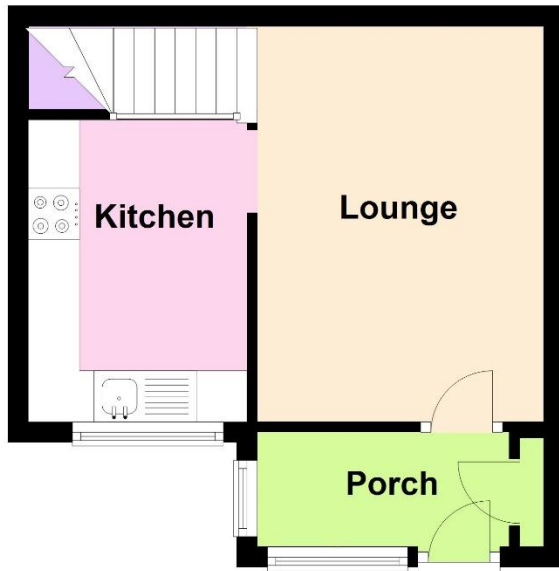
Viewing strictly by appointment through the agent. Please respect the occupier's privacy and do not make an approach by knocking on the door.







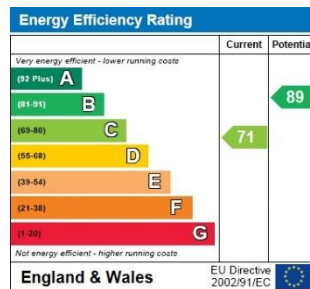
## Ground Floor



## First Floor



Whilst every attempt has been made to ensure the accuracy of the floor plan contained here, measurements of doors, windows, rooms and any other items are approximate and no responsibility is taken for any error, omission or mis-statement. This plan is for illustrative purposes only and should be used as such by any prospective purchaser. The services, systems and appliances shown have not been tested and no guarantee as to their operability or efficiency can be given.  
Plan produced using PlanUp.



**Notice:** Please note we have not tested any apparatus, fixtures, fittings, or services. Interested parties must undertake their own investigation into the working order of these items. All measurements are approximate and photographs provided for guidance only.

