



Price £675


Novahomes Lettings are pleased to present this stylish and contemporary purpose built first floor apartment, located within the popular residential area of Stoke, close to local amenities, shops, schools and bus routes and with easy access to Plymouth city centre. The accommodation briefly comprises two bedrooms one with en suite, bathroom, kitchen with integral appliances, open plan lounge and dining area with doors to balcony. The property has many benefits which include double glazing, gas central heating, external storage area and garage. Available NOW - unfurnished.



NOVAHOMES
SALES & LETTINGS



Contact Jo Lines & The Lettings
Team To Find Out More

 01752 206040

Endeavour Court, Stoke, PL1 5AX

Novahomes Lettings are pleased to present this stylish and contemporary purpose built first floor apartment, located within the popular residential area of Stoke, close to local amenities, shops, schools and bus routes and with easy access to Plymouth city centre. The accommodation briefly comprises two bedrooms one with en suite, bathroom, kitchen with integral appliances, open plan lounge and dining area with doors to balcony. The property has many benefits which include double glazing, gas central heating, external storage area and garage. Available NOW - unfurnished.

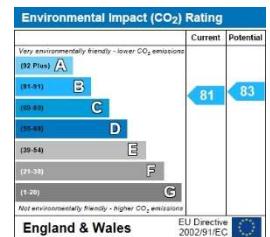
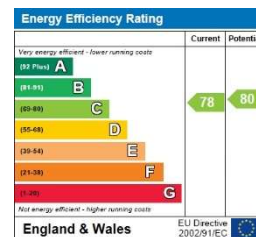
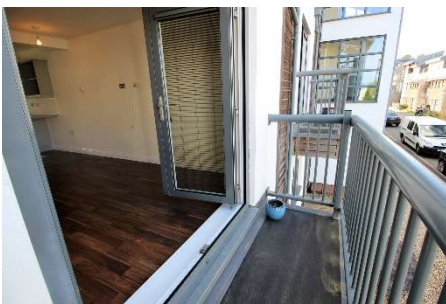
A Holding Deposit of £155 (Equivalent to One Week`s Rent) will be due on Application. Successful Applicants will have their Holding Deposit offset against their initial Rent and Deposit Payment. The Deposit of £775 (Equivalent to 5 Weeks Rent) will be held with the DPS. Please call us on 01752 206040 for further information.

Accommodation Comprises

Council Tax Band B

Viewing Arrangements

Viewing strictly by appointment through the agent. Please respect the occupier`s privacy and do not make an approach by knocking on the door.



Notice: Please note we have not tested any apparatus, fixtures, fittings, or services. Interested parties must undertake their own investigation into the working order of these items. All measurements are approximate, and photographs provided for guidance only.