



Price £825 PCM


Diamond Avenue, Lipson, PL4 8QD

NH
ESTABLISHED 2008

NOVAHOMES
SALES & LETTINGS



Contact Jo Lines & The Lettings
Team To Find Out More

 01752 206040

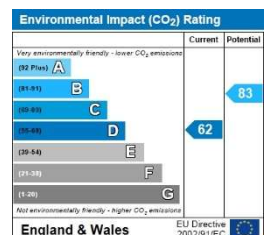
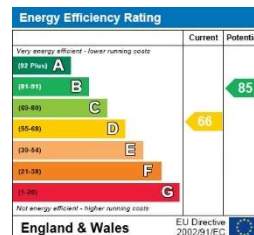
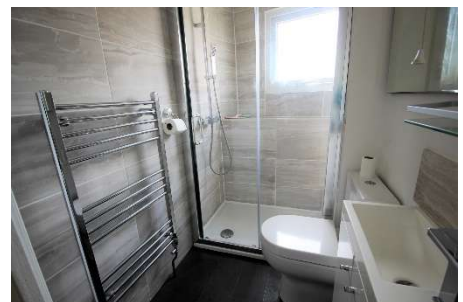
Viewing Arrangements

Viewing strictly by appointment through the agent. Please respect the occupier's privacy and do not make an approach by knocking on the door.

Novahomes Lettings are pleased to offer this 3 bedroom period property located at the end on a cul-de-sac in Lipson. This home has been recently redecorated throughout and is well presented with a modern look. The property has generous room sizes, high ceiling and some original features. To the rear of the property there is a low maintenance, decked courtyard. Available now, unfinished. pets may be considered.

EPC D

A Holding Deposit of £190 (Equivalent to One Week's Rent) will be due on Application. Successful Applicants will have their Holding Deposit offset against their initial Rent and Deposit Payment. The Deposit of £951 (Equivalent to 5 Weeks Rent) will be held with the DPS. Please call us on 01752 206040 for further information.



Notice: Please note we have not tested any apparatus, fixtures, fittings, or services. Interested parties must undertake their own investigation into the working order of these items. All measurements are approximate, and photographs provided for guidance only.