



Asking Price £145,000

Welcome to Zion Street, where luxury meets convenience! Novahomes our pleased to introduce this stunning one-bedroom ground floor apartment, showcasing a perfect blend of style, comfort, and accessibility. Nestled in a prime location, this property offers level access and is strategically positioned just moments away from the picturesque Plymouth Hoe park and the vibrant Barbican, ensuring you experience the best of Plymouth right at your doorstep. As you step inside, you'll be captivated by the modern elegance that defines every corner of this home. The interior has been renovated, boasting a contemporary design and high-quality finishes throughout. The recent upgrades include the gas central heating system, a stylish modern kitchen, a sleek shower room, and new flooring and decoration, ensuring both functionality and aesthetics are perfectly balanced. The spacious and bright living area provides a welcoming atmosphere, ideal for relaxation and entertaining guests with views towards Plymouth Hoe Park. Beyond the contemporary interiors, this property boasts an unbeatable location. Enjoy leisurely strolls in the nearby Plymouth Hoe park, soak in the breathtaking views of the waterfront, or explore the historic charm of the Barbican district. With easy access to the city centre, you'll find an array of dining, shopping, and entertainment options right at your fingertips.

novahomes

Established 2008

 01752 206040

 sales@novahomes.co.uk

 www.novahomes.co.uk

Zion Street, The Hoe, PL1 2HZ

Accommodation Comprises

Welcome to Zion Street, where luxury meets convenience! Novahomes are pleased to introduce this stunning one-bedroom ground floor apartment, showcasing a perfect blend of style, comfort, and accessibility. Nestled in a prime location, this property offers level access and is strategically positioned just moments away from the picturesque Plymouth Hoe park and the vibrant Barbican, ensuring you experience the best of Plymouth right at your doorstep.

As you step inside, you'll be captivated by the modern elegance that defines every corner of this home. The interior has been renovated, boasting a contemporary design and high-quality finishes throughout. The recent upgrades include the gas central heating system, a stylish modern kitchen, a sleek shower room, and new flooring and decoration, ensuring both functionality and aesthetics are perfectly balanced.

The spacious and bright living area provides a welcoming atmosphere, ideal for relaxation and entertaining guests with views towards Plymouth Hoe Park. Beyond the contemporary interiors, this property boasts an unbeatable location. Enjoy leisurely strolls in the nearby Plymouth Hoe park, soak in the breathtaking views of the waterfront, or explore the historic charm of the Barbican district. With easy access to the city centre, you'll find an array of dining, shopping, and entertainment options right at your fingertips.

In addition to its prime location and impeccable design, this ground floor apartment offers the convenience of level access, making it an ideal choice for individuals seeking comfort and accessibility.

Don't miss the opportunity to make this stunning apartment your new home. Contact Novahomes today to arrange a viewing and experience the epitome of modern living in the heart of Plymouth. Your dream home awaits at Zion Street!

You enter the property into the hallway, which has two large storage cupboards and access into the open plan living space. The open plan living space has delightful views over Plymouth Hoe park and a wonderful fitted kitchen, with access through to an inner hallway. The kitchen has a range of base mounted units with a work surface over, with an integral electric fan oven, with ceramic hob over. There is an under counter fridge with freezer compartment with modern splash backs to finish. There are splendid views from both the kitchen and the open plan living space.

The inner hallway gives access to the bedroom, the utility cupboard and the shower room. The bedroom has a window to the rear elevation and two large storage cupboards, one of which houses the Combi Boiler. The utility cupboard is shelved and has a fitted washer/dryer. The shower room has a walk in shower with two shower heads, a hand wash basin and a low level w/c. The shower room is superbly presented, with modern splash backs to finish.

OUTSIDE Externally, the property has access to lawned communal gardens and a generous outside storage shed. The property also has access to a permit parking space which is purchased via Plymouth City Council.

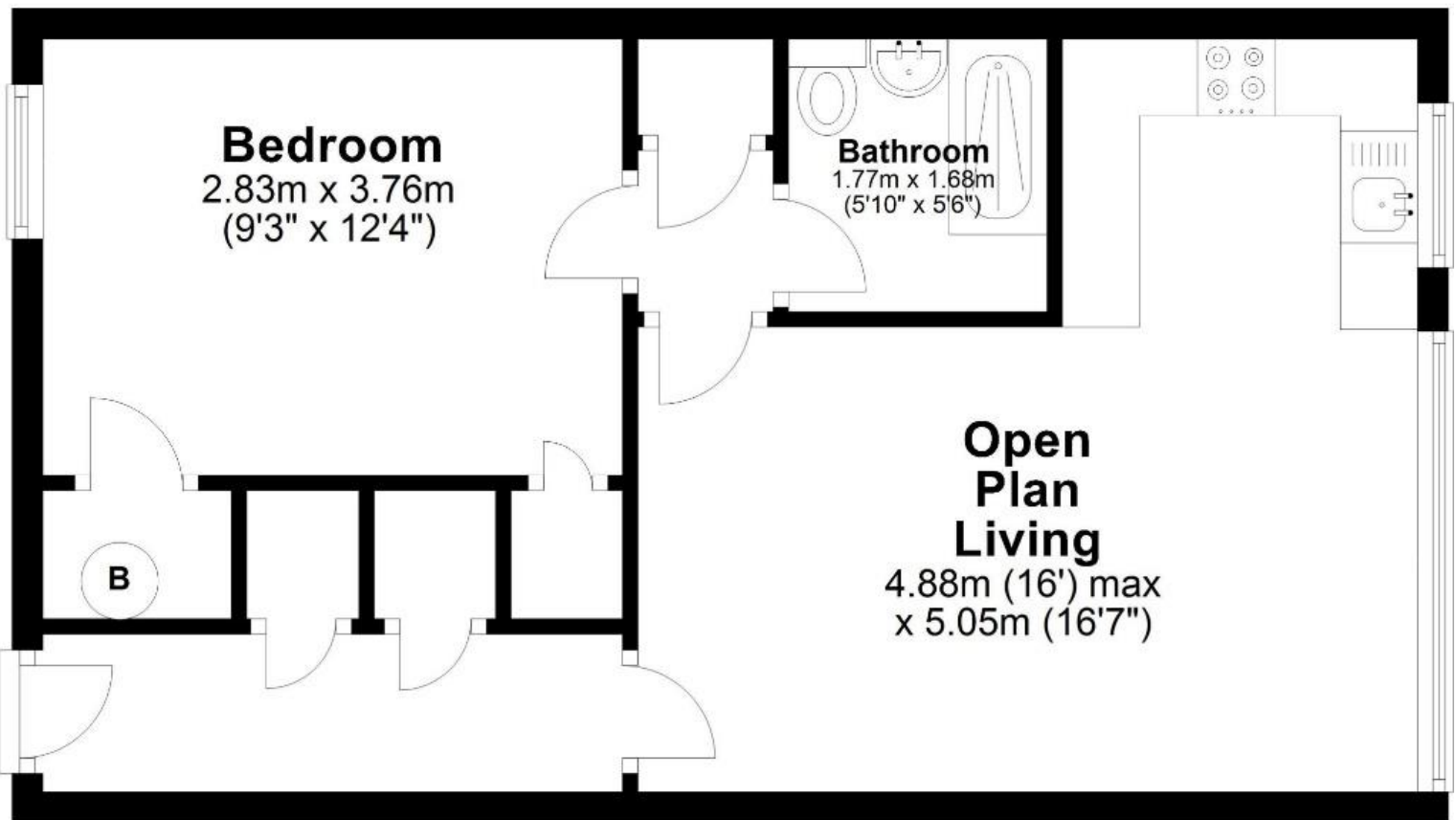
Lease Length Remaining – 900+ years
Service Charge - £93.00 per month
Ground Rent - £10.00 per month



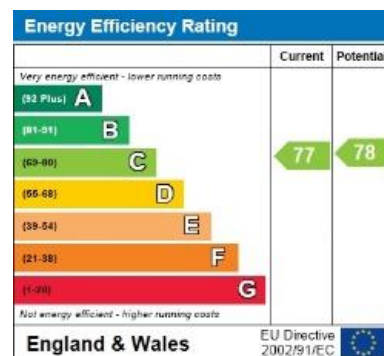


Ground Floor

Approx. 43.5 sq. metres (468.3 sq. feet)



Total area: approx. 43.5 sq. metres (468.3 sq. feet)
Zion Street, The Hoe, Plymouth



Notice: Please note we have not tested any apparatus, fixtures, fittings, or services. Interested parties must undertake their own investigation into the working order of these items. All measurements are approximate and photographs provided for guidance only.

