



Asking Price £100,000

Novahomes are delighted to offer this very nicely presented one bedroom apartment to the market. The property is situated on the ground floor of a very popular development in Stoke, just a short walk from Stoke Village. The accommodation comprises; a nicely presented entrance hallway which leads to all of the main living rooms. The lounge is a great size room that has space for a small dining table and has dual aspect windows which allows natural light to flood the room. The kitchen is off the lounge and has a range of matching wall and base units with plenty of work surface if you enjoy cooking. The bedroom is a really good size double room that has built in wardrobes. The very nicely presented family bathroom completes the living accommodation and has a good size airing cupboard in it. Further benefits include a private allocated parking space and no onward chain. Novahomes highly recommend an early viewing to avoid disappointment.

Fremantle Gardens, Stoke, PL2 1JW

Accommodation Comprises

Novahomes are delighted to offer this very nicely presented one bedroom apartment to the market. The property is situated on the ground floor of a very popular development in Stoke, just a short walk from Stoke Village. The accommodation comprises; a nicely presented entrance hallway which leads to all of the main living rooms. The lounge is a great size room that has space for a small dining table and has dual aspect windows which allows natural light to flood the room. The kitchen is off the lounge and has a range of matching wall and base units with plenty of work surface if you enjoy cooking. The bedroom is a really good size double room that has built in wardrobes. The very nicely presented family bathroom completes the living accommodation and has a good size airing cupboard in it. Further benefits include a private allocated parking space and no onward chain. Novahomes highly recommend an early viewing to avoid disappointment.

Entrance Hall

Lounge/Dining Room 4.45m (14'7") x 3.09m (10'2")

Kitchen 3.27m (10'9") x 1.62m (5'4")

Bedroom 3.27m (10'9") x 3.06m (10'0")

Bathroom

Parking

One allocated parking space

Other Information

Lease length remaining - 960 years

Service Charge - £70.00 per month

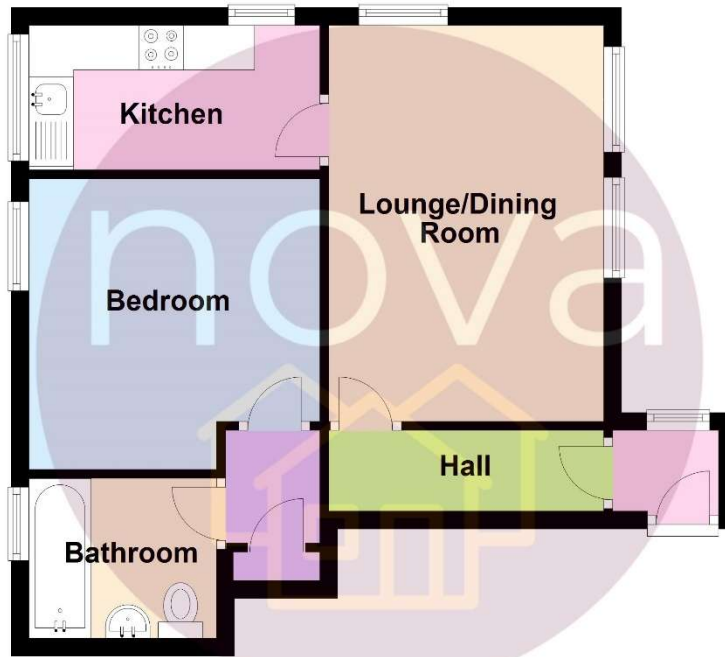
Viewing Arrangements

Viewing strictly by appointment through the agent. Please respect the occupier's privacy and do not make an approach by knocking on the door.





Ground Floor



Whilst every attempt has been made to ensure the accuracy of the floor plan contained here, measurements of doors, windows, rooms and any other items are approximate and no responsibility is taken for any error, omission or mis-statement. This plan is for illustrative purposes only and should be used as such by any prospective purchaser. The services, systems and appliances shown have not been tested and no guarantee as to their operability or efficiency can be given.
Plan produced using PlanUp.

Notice: Please note we have not tested any apparatus, fixtures, fittings, or services. Interested parties must undertake their own investigation into the working order of these items. All measurements are approximate and photographs provided for guidance only.

