



Asking Price £160,000

Novahomes are pleased to offer this two double-bedroom mid-terrace home, situated in the popular location of Leigham. With great potential and the added benefits of a garage and no onward chain, this property presents an exciting opportunity for buyers looking to put their own stamp on a home. Requiring a good degree of modernisation, the property is priced accordingly and, once refurbished, would make an ideal home. The spacious accommodation is arranged over two floors, comprising an entrance hall, lounge, dining room, and kitchen on the ground floor.

Upstairs, there are two generously sized double bedrooms with ample storage, a bathroom, and a separate WC. Externally, the property boasts front and rear gardens, with the rear garden featuring a large storage shed equipped with power, lighting, and plumbing. With its sought-after location, great potential, and fantastic space, this home is a must-see. Contact Novahomes today to arrange a viewing!

Cockington Close, Leigham, PL6 8RQ

Accommodation Comprises

Ground Floor

Hall

Lounge 3.91m (12` 10") max x 3.53m (11` 7")

Dining Room 2.73m (9`) x 2.64m (8` 8")

Kitchen 2.89m (9` 6") x 2.64m (8` 8")

First Floor

Landing

Bathroom 1.80m (5` 11") x 1.60m (5` 3")

Bedroom 1 4.20m (13` 9") x 2.63m (8` 8")

Bedroom 2 3.92m (12` 10") x 2.92m (9` 7")

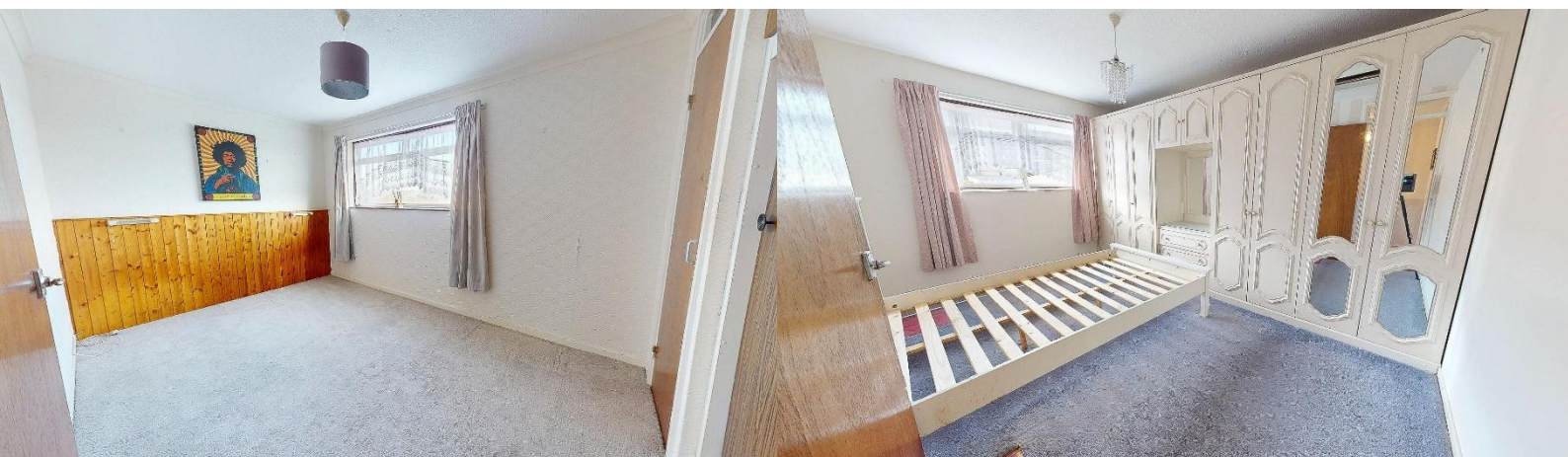
Bathroom 1.80m (5` 11") x 1.60m (5` 3")

WC

Viewing Arrangements

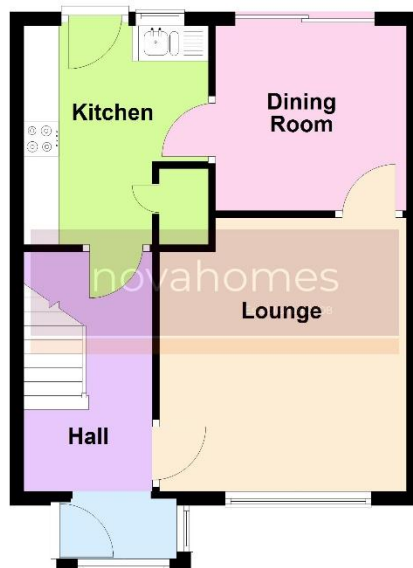
Viewing strictly by appointment through the agent. Please respect the occupier's privacy and do not make an approach by knocking on the door.







Ground Floor



First Floor



Notice: Please note we have not tested any apparatus, fixtures, fittings, or services. Interested parties must undertake their own investigation into the working order of these items. All measurements are approximate and photographs provided for guidance only.

