



Asking Price £190,000

Novahomes are pleased to present this beautifully presented two double bedroom terraced home, situated in the highly convenient central location of Welsford Avenue, Stoke. The property offers spacious and well-appointed living accommodation, comprising a welcoming lounge with a feature wood burner, a modern kitchen/dining room with double doors opening onto the rear courtyard, a separate utility room, and a generously sized ground floor bathroom. Upstairs, there are two double bedrooms, both offering ample space and natural light. Further benefits include gas central heating, double glazing throughout, and a low-maintenance rear courtyard garden—perfect for relaxing or entertaining. This charming home is ideally positioned close to local amenities, schools, and transport links, making it a fantastic choice for first-time buyers, young professionals, or investors alike. Early viewing is highly

novahomes

Established 2008

 01752 206040

 sales@novahomes.co.uk

 www.novahomes.co.uk

Welsford Avenue, Stoke, PL2 1HU

Accommodation Comprises

Ground Floor

Hall

Open plan, door to:

Lounge 3.99m (13` 1") x 3.29m (10` 10")

Kitchen/Diner 3.99m (13` 1") x 3.32m (10` 11")

Utility 2.52m (8` 3") x 2.14m (7`)

Bathroom 2.59m (8` 6") x 2.23m (7` 4")

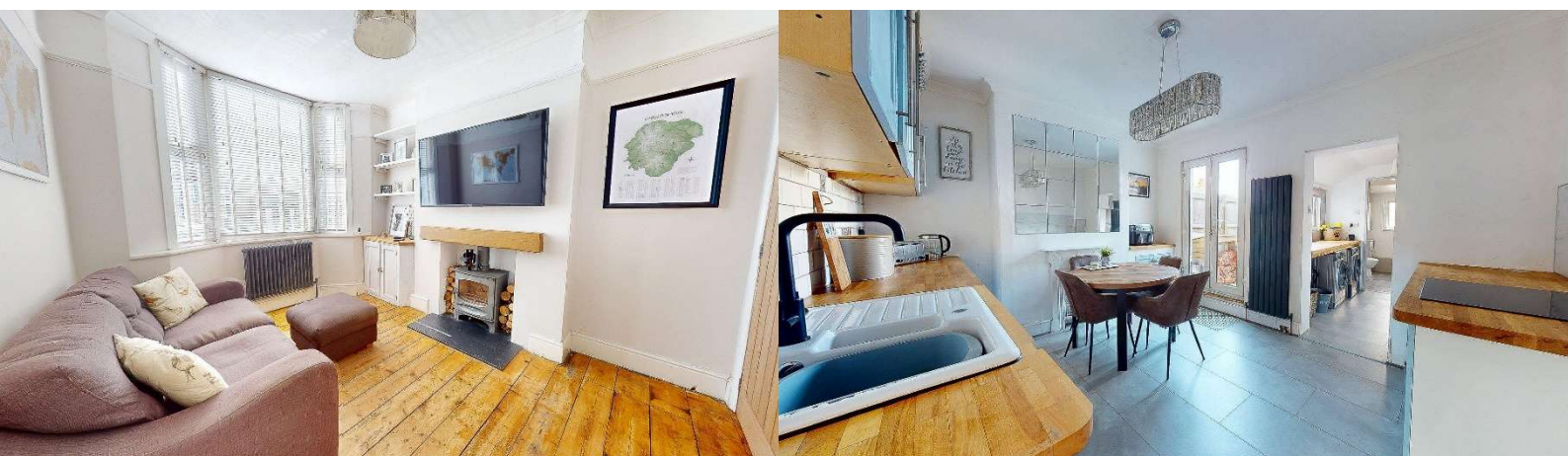
First Floor

Bedroom 1 3.99m (13` 1") x 3.32m (10` 11")

Bedroom 2 3.99m (13` 1") x 3.29m (10` 10")

Viewing Arrangements

Viewing strictly by appointment through the agent. Please respect the occupier's privacy and do not make an approach by knocking on the door.



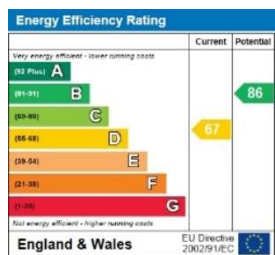




Ground Floor



First Floor



Notice: Please note we have not tested any apparatus, fixtures, fittings, or services. Interested parties must undertake their own investigation into the working order of these items. All measurements are approximate and photographs provided for guidance only.



**1%
FEE**

**0^{WK}
CONTRACT**

**FULL SERVICE
ESTATE AGENTS**

**NO SALE
NO FEE**

