



Asking Price £120,000

Located within easy reach of Plymouth City Centre, this spacious three-bedroom maisonette offers an excellent opportunity for first-time buyers, investors or buyers looking for a property they can modernise and add value to over time. Arranged over two floors, the accommodation provides generous living space throughout including a sizeable lounge, fitted kitchen, three bedrooms and a modernised shower room.

The property already benefits from uPVC double glazing and gas central heating, while some cosmetic updating would allow the next owner to personalise the home to their own taste and style.

Vaagso Close, Plymouth, PL1 4DD

Situated within a convenient residential location, this three-bedroom maisonette arranged over two floors offers spacious accommodation and presents an excellent opportunity for first-time buyers, investors or purchasers looking for a property to modernise and add value to.

The property benefits from uPVC double glazing, gas central heating and an allocated off-road parking space.

Entrance Hall

Entered via a uPVC front door into a welcoming hallway with wood-effect flooring, radiator, ceiling-mounted light point and stairs rising to the first floor. Useful built-in storage cupboards provide additional practicality.

Kitchen

2.56m x 3.71m (8` 4" x 12` 2")

Fitted with a range of wall and base units with work surfaces over incorporating a stainless steel sink and drainer unit. Space for freestanding appliances and cooker. uPVC double glazed window to the front elevation, radiator, vinyl flooring and ceiling light point. The kitchen offers scope for updating and modernisation.

Lounge

4.53m x 3.83m (14` 10" x 12` 6")

A generous reception room with a large uPVC double glazed window allowing good natural light into the room. Features include fitted carpet, radiator, coving, ceiling light points and ample space for lounge furnishings and dining furniture if required.

First Floor Landing

Spacious landing area with fitted carpet, ceiling light point and built-in storage cupboards.

Master Bedroom

4.52m x 2.73m (14` 9" x 8` 11")

A well-proportioned double bedroom with uPVC double glazed window to the rear elevation, fitted carpet, radiator and ceiling fan light fitting. Plenty of space for wardrobes and bedroom furniture.

Bedroom Two

2.48m x 4.07m (8` 1" x 13` 4")

Another good-sized double bedroom featuring fitted wardrobes, uPVC double glazed window, fitted carpet, radiator and ceiling light point.

Bedroom Three

2.02m x 3.11m (6` 7" x 10` 2")

A single bedroom suitable as a child`s room, home office or study. Comprising uPVC double glazed window, radiator, fitted carpet and ceiling light point.

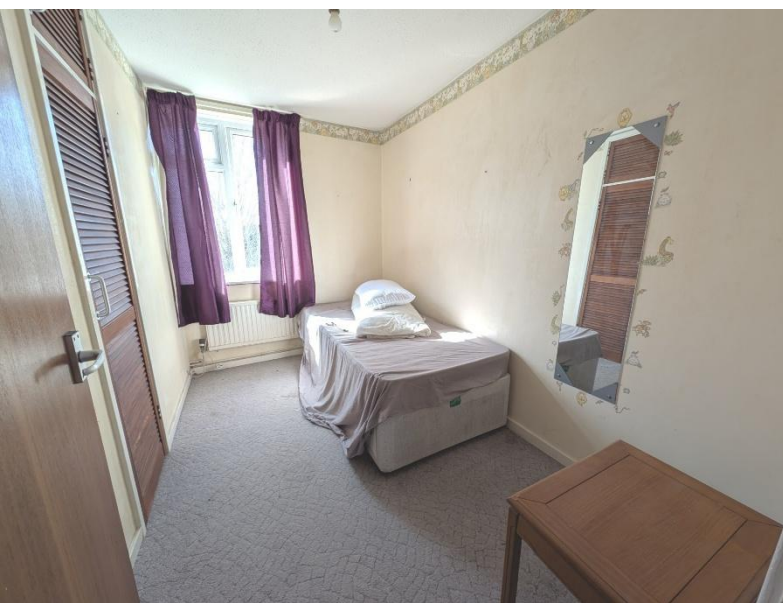
Shower Room

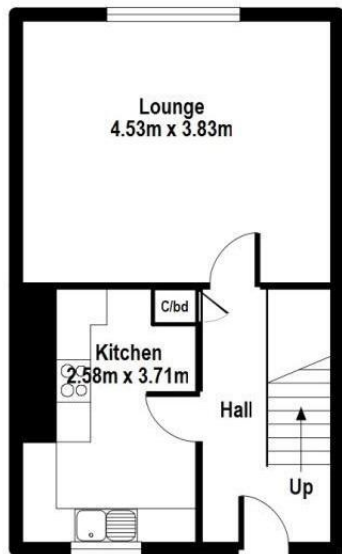
Modernised shower room fitted with a corner shower enclosure, low-level WC and pedestal wash hand basin. Fully tiled walls, extractor fan, ceiling light point and contemporary finish throughout.

Outside

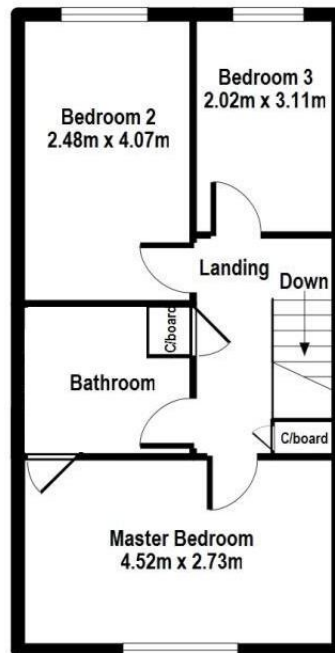
The property is positioned within a residential block with communal surrounding grounds and benefits from an allocated off-road parking space. The exterior offers easy access to local amenities, transport links and Plymouth City Centre.







Ground Floor

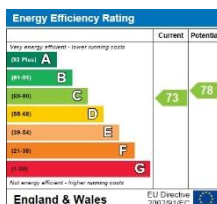


First Floor

FOR ILLUSTRATIVE PURPOSES ONLY. NOT TO SCALE

Whilst every attempt has been made to ensure the accuracy of the floor plan shown, all measurements, positioning, fixtures, features, fittings and any other data shown are an approximate interpretation for illustrative purposes only and are not to scale. No responsibility is taken for any error, omission, miss-statement or use of data shown.

The above statement applies to both 'The Floor Plan People' and the Estate Agent marketing this property
 (c) THE FLOOR PLAN PEOPLE unauthorised reproduction prohibited.



Notice: Please note we have not tested any apparatus, fixtures, fittings, or services. Interested parties must undertake their own investigation into the working order of these items. All measurements are approximate and photographs provided for guidance only.

