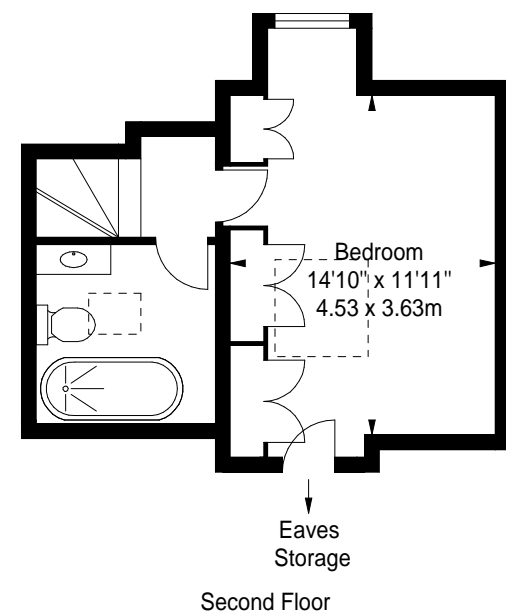
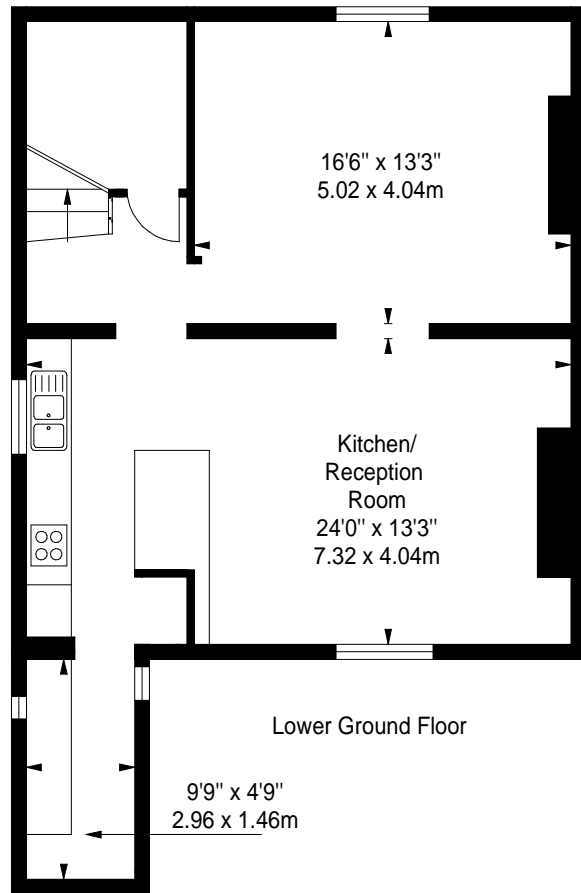


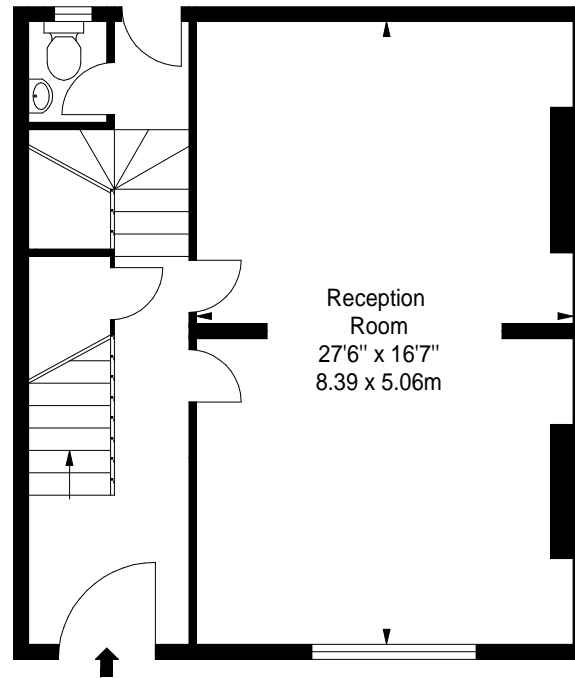
**Guildford Road,  
Stockwell, SW8 2BY**  
Approximate Gross Internal Area  
2309 sq ft / 214.51 sq m



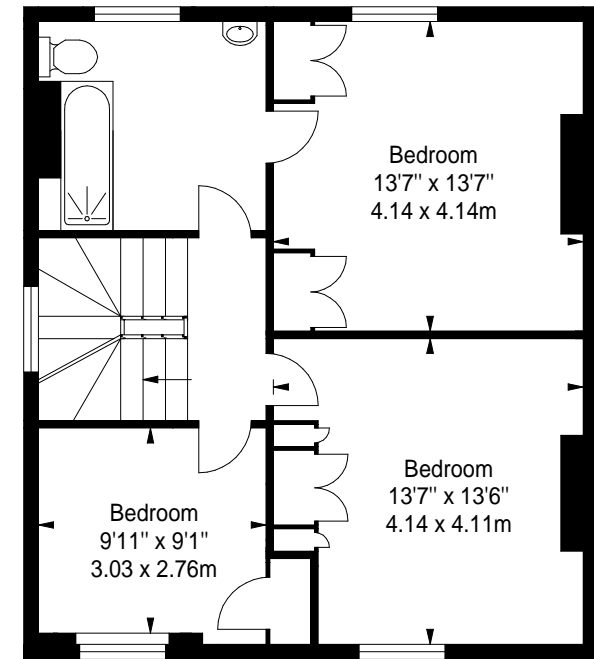
Second Floor



Lower Ground Floor



Ground Floor



First Floor

Illustration For Identification Purposes Only. Not To Scale  
As Defined by RICS - Code of Measuring Practice  
[www.polarisltd.co.uk](http://www.polarisltd.co.uk)