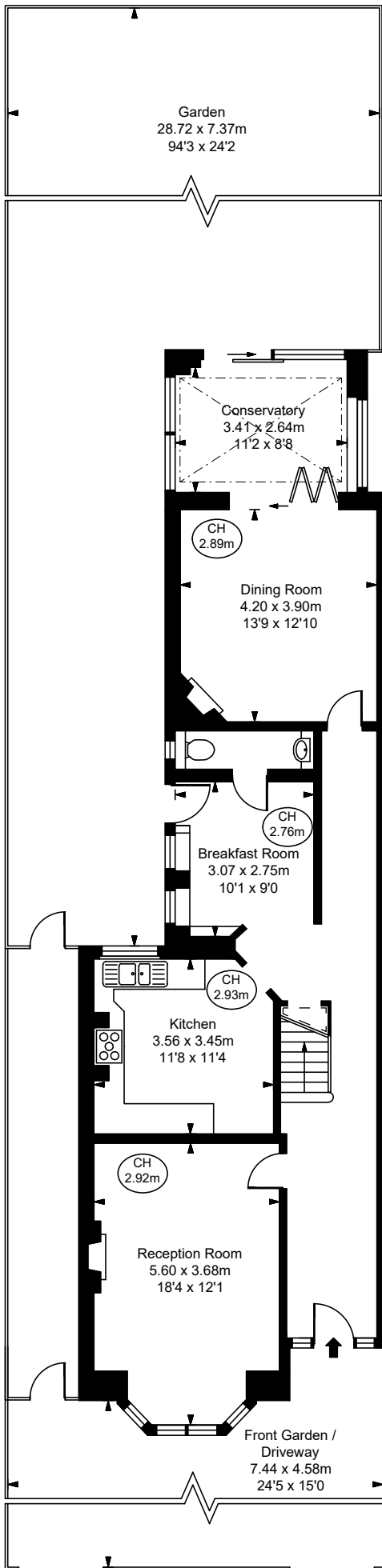


Kingsmead Road, SW2

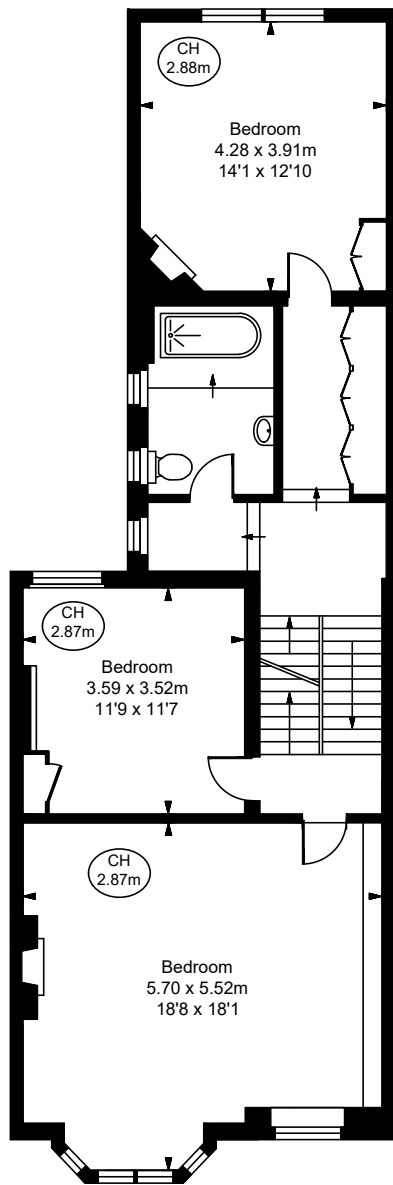
Approximate Gross Internal Area
222.20 sq m / 2,392 sq ft

(Including restricted height
under 1.5m □ = □)

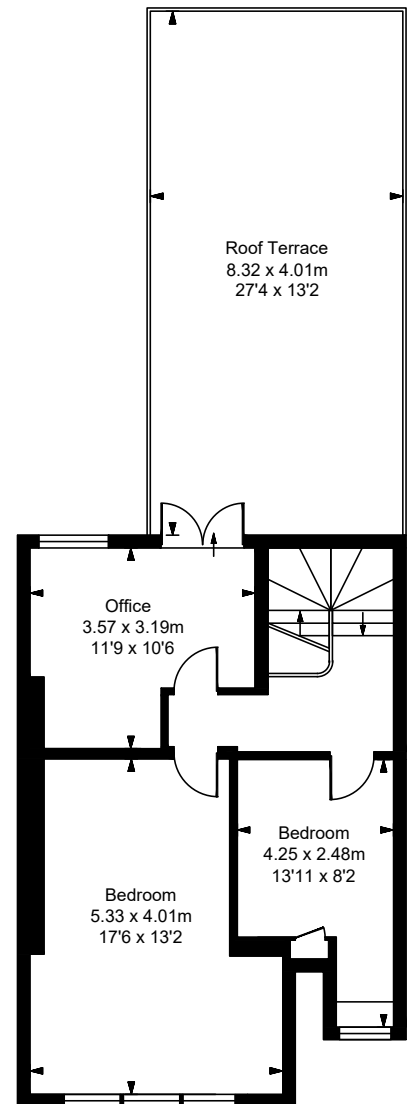
(CH = Ceiling Heights)



Ground Floor
Approximate Gross Internal Area
91.06 sq m / 980 sq ft



First Floor
Approximate Gross Internal Area
83.86 sq m / 903 sq ft



Second Floor
Approximate Gross Internal Area
47.28 sq m / 509 sq ft