

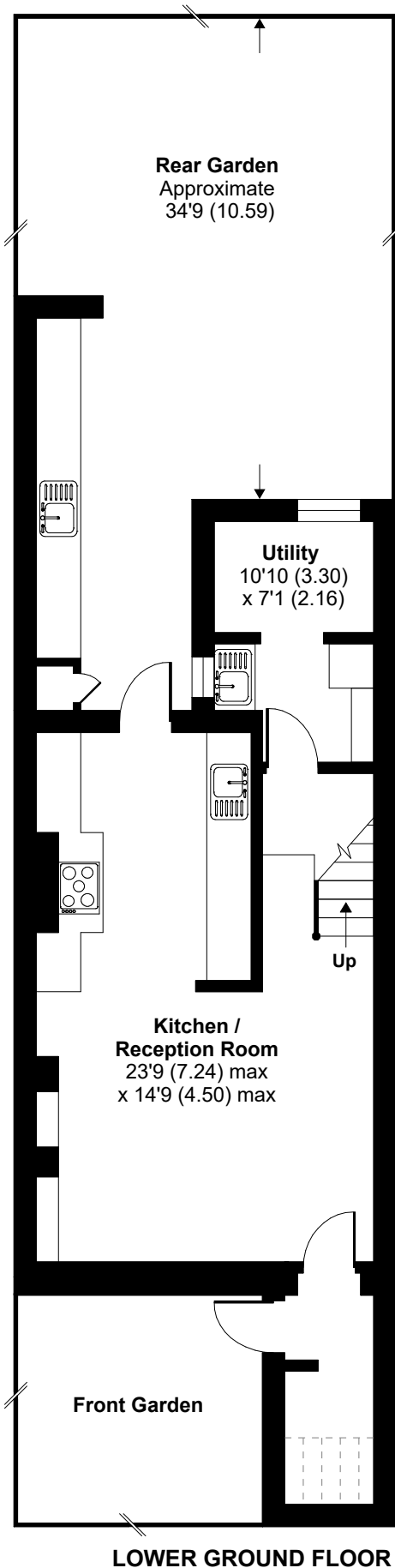
Sidney Road, London, SW9

Approximate Area = 1326 sq ft / 123.2 sq m

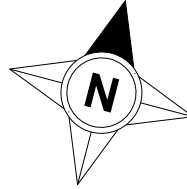
Limited Use Area(s) = 12 sq ft / 1.1 sq m

Total = 1338 sq ft / 124.3 sq m

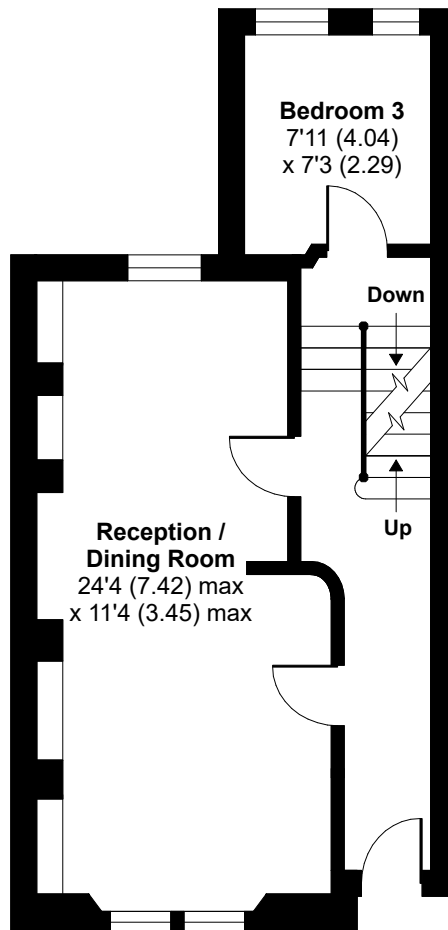
For identification only - Not to scale



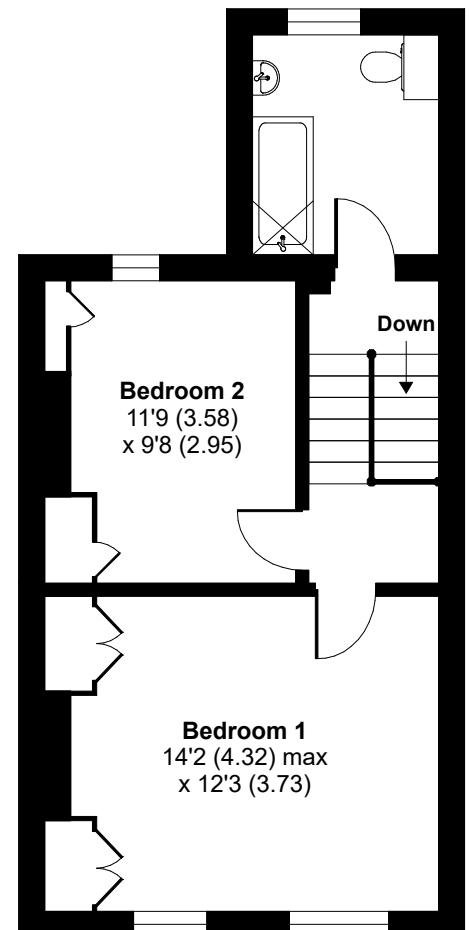
LOWER GROUND FLOOR



Denotes restricted
head height



RAISED GROUND FLOOR



FIRST FLOOR